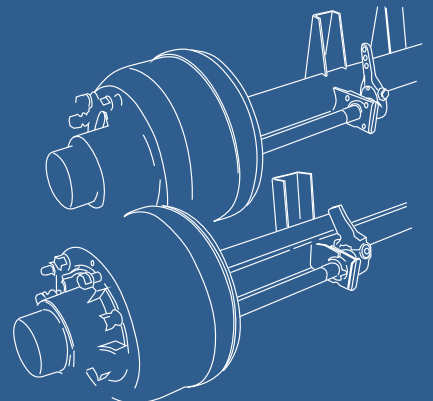
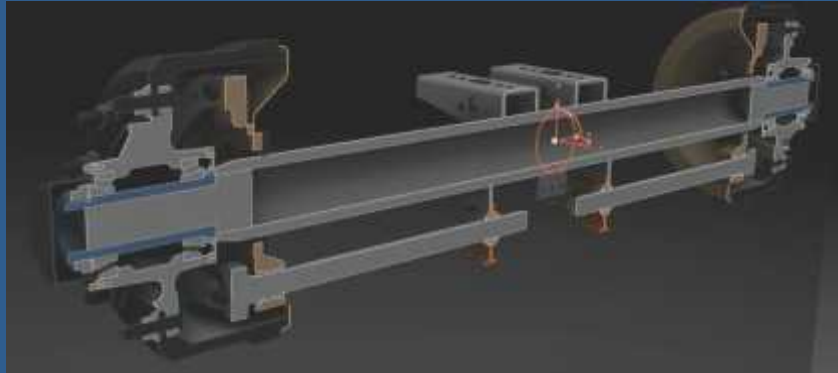
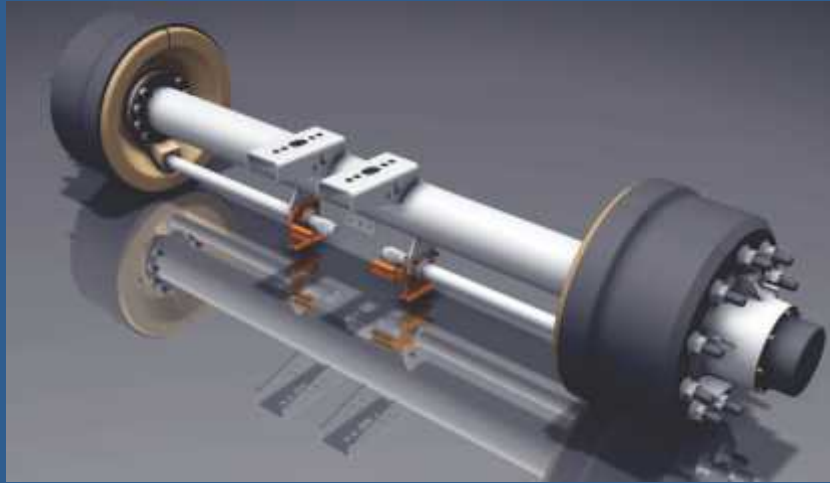


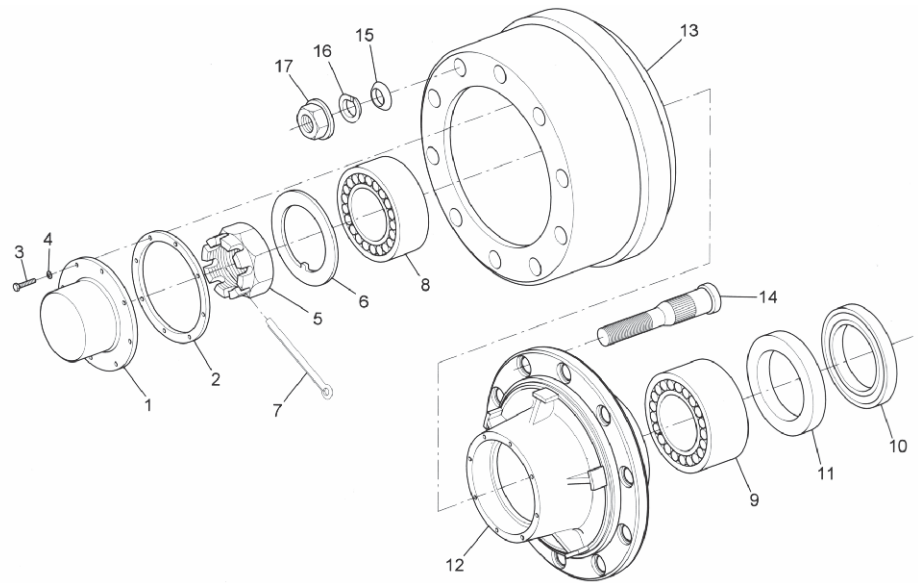
TRAILER AXLES

BIGMAX Axles are manufactured to the latest technical standards and precise production tolerances. Distinguish not only through the exceptional use of high grade raw materials and enhanced design features such as outboard brake drums, equal size large diameter wheel bearings, dust proofed seal bushing and self aligning spherical camshaft bearings, but also through outstanding attention to detail eg. both the brake drum and hub are machined externally to minimise imbalance and resultant wear and tear on suspension components as well as tyres.



propar 11000 / 15000 outboard mounted brake drums

1	Hub Cap - 8 Hole	01CP001
	Gasket	01GS001
2	Setscrew M6 x 16	01CP100
3	Spring Washer - 6 dia.	16HT210
	Axle Nut	01AN100
4	Axle Washer	01AW001B
5	Split Pin 8x140	01SP003
	Outer Bearing	
6	518445/10	01BR001
7	Inner Bearing	
8	1100 - 518554/10	01BR001
	Oil Seal - propar 11000	01OS009
	Collar - p/par 11000	01OC001
9	Hub - propar 11000	01HU001
	10 Stud - M22 for 420 Brake Std. stud centering	
10	Opt. hub centering Opt. Oil Filled	
11	Brake Drum - 420x180	01BD003B
12	10 stud - 403	



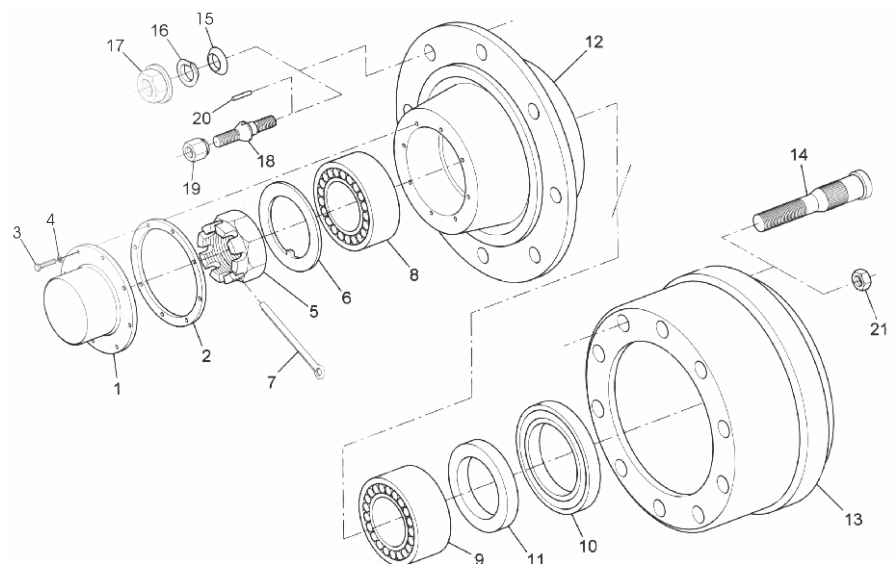
14	Wheel Stud - M22 (BM)	01BN015C
	Inner Washer - M22/M30	01WW100
15	Outer Washer - M22 Spring	01WW101
16	M30 Spherical	
	Wheel Nut - M22/M30	01WN001
	Spigot Nut	01WN105

17

18

propar 11000 / 15000 inboard mounted brake drums

1.	Hub Cap 8 Hole	01CP001
2.	Gasket	01GS001
3.	Setscrew M6 x 16	01CP100
4.	Spring Washer 6 dia.	16HT210
5.	Axle Nut	01AN100
6.	Axle Washer	01AW001B
7.	Split Pin - 8 x 125	0101SP003
8.	Outer Bearing - 518445/410	01BR001
9.	Inner Bearing	
	Propar 11000 - 518445/410	01BR001
10.	Oil Seal - Propar 11000	01OS009
	Local Axles - Propar 15000	
11.	Collar - Propar 11000	01OC001
	Local Axle - Propar 15000	
12.	Hub - Propar 11000	01HU004B
	10 Stud M22 / 335 PCD 8 Stud M22 / 275 PCD	
13.	Brake Drum -	01BD003B
	420 x 180 10 Stud M22 -	
	420 x 180 10 Stud M30	
	420 x 130 10 Stud M22	
	310 x 203 8 Stud M22	
14.	Wheelstud - M22 / M30	

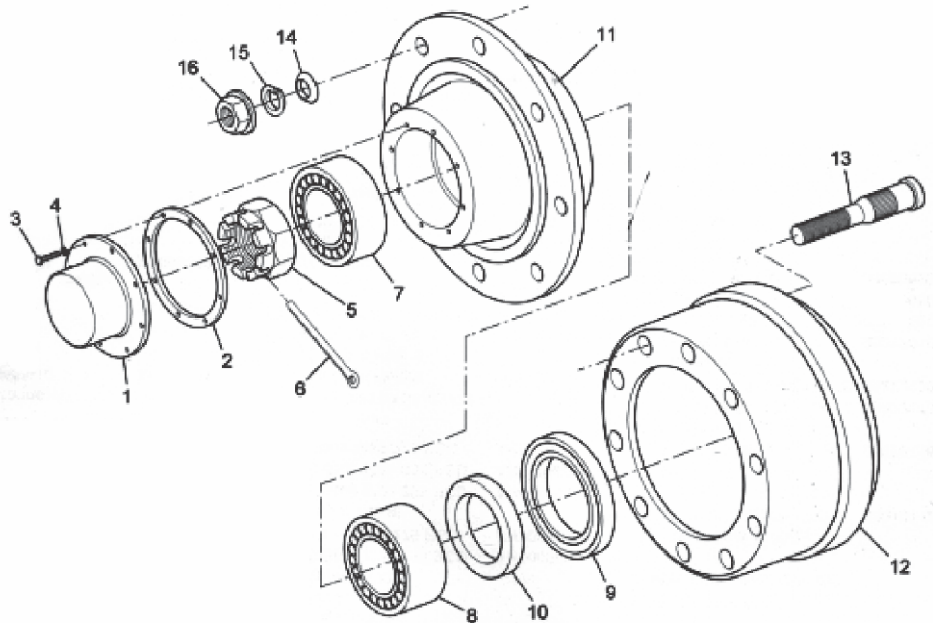


15.	Inner Washer - M22	01WW100
16.	Outer Washer - M22	
17.	Wheel Nut - M22	01WW101
18.	Spigot Nut	01WN001
		01WN105

**SW 75 sq., 92 sq., 105, 112 sq. & 127 dia.
axle (3 5/8)**

**SQ Axle 10 Stud (Inboard
Mounted Brake Drum)**

1. Hub cap 6-Hole	01CP016I
2. Gasket	01GS004
3. Setscrew M6 x 16	01CP100
4. Spring Washer 6 Dia	16HT210
5. Axle Nut 1.5" BSP	01AN103
6. Split Pin 6 x 70	01SP003
7. Outer Bearing 749/742	01BR025
8. Inner Bearing 749/742	01BR025
9. Oil Seal	01OS009
10. Collar	01OC054
11. Hub	01HU012
12. Brake Drum 395x150 10 Stud - 518	01BD004B
13. Wheelstud M22	01BN015C
14. Inner Washer	01WW100
15. Outer Spring Washer	01WW101
16. Wheel Nut M22	01WN105B



**75 SQ & 92 Axle 8 Stud
(Inboard Brake Drum)**

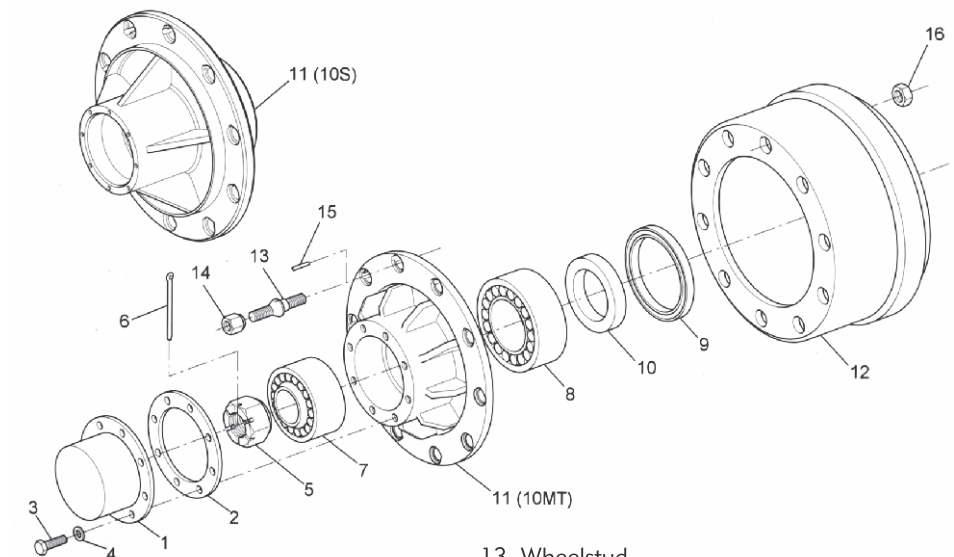
1. Hub cap 6-Hole		9. Oil Seal 92&75 sq axle
2. Gasket		10. Collar: 92 sq & 75 sq
3. Setscrew M6 x 16		11. Hub - For 92 sq & 75 sq
4. Spring Washer 6 Dia		12. Brake Drum - 395 x 150 8 Stud M22 & 355 x 90
5. Axle Nut 1.25" BSP		13. Wheelstud M22
6. Split Pin 6 x 70		14. Inner Washer
7. O/Bearing 92&75 sq. axle 32214		15. Outer Spring Washer
8. I/ Bearing 92&75 sq. axle 32214		16. Wheel Nut M22

**105/112 SQ & 127 Dia, Axle
10 Stud (O/B Brake Drum)**

4. Spring Washer 6 Dia		9. Oil Seal
5. Axle Nut M88		10. Collar
6. Split Pin 8 x 125		11. Hub
7. Outer Bearing - HM5184445/410		12. Brake Drum - 420 x 180 10 Stud
8. Inner Bearing - HM5184445/410		

HF 10mt, 10s & 8s axle

1. Hub Cap- 10MT & 10 S - 6 Hole & S 4 Hole	01CP103
2. Gasket - 10MT & 10S	01GS005
3. Setscrew M6x16	01CP100
4. Spring Washer 6 Dia	16HT210
5. Axle Nut - 10MT M60x4, 10S M45 x3, 8S M36x3	01AN102
6. Split Pin - 10MT & 10S 8x90 8S 6 x 70	
7. Outer Bearing - 10MT 211749/710, 10S 32311 8S 32308	01BR027 01AA000
8. Inner Bearing - 10MT 2182248/210, 10S 32311, 8S 32308	01BR002D
9. Oil Seal - 10MT & 10S 8S	01OS009
10. Oil Seal Collar - 10MT, 10S, 8S	01OC057
11. Hub - 10MT 10 Stud 10 MT 10 Stud York 10S 10 Stud 335mm, 225mm PCD	01HU019

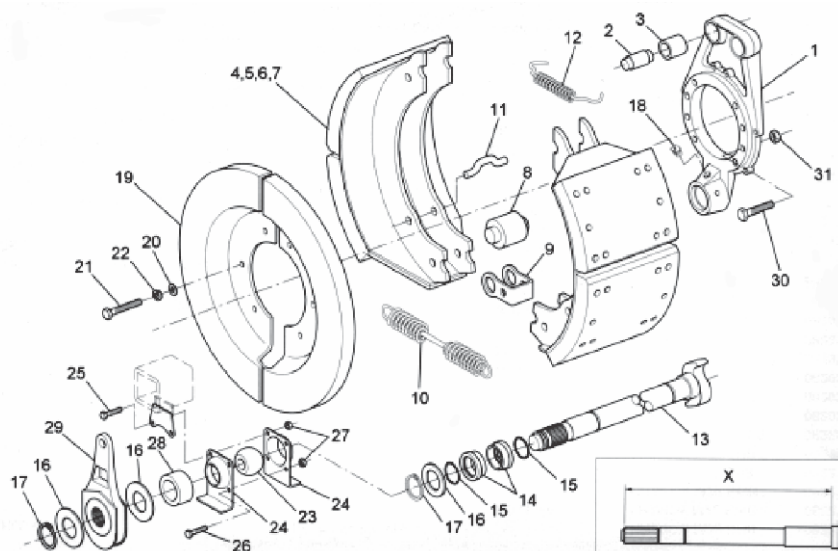


12. Brake Drum - 402	01BD014
420 x 180 10 Stud	403
395 x 180 10 Stud	402

13. Wheelstud H7/8" X M22	01BN012D
RH7/8" X M22	01BN011D
14. Wheel Nut - LH7/8" BSF,	01WN104D
RH 7/8" BSF	01WN103D
15. Dowel - 5mm/6mm Dia	01DP001
16. Backnut - RH M22 x 2.5,	01WN002
RH M20 X 1.5	01WN102

HF 420 brake assembly fabricated xem shoe

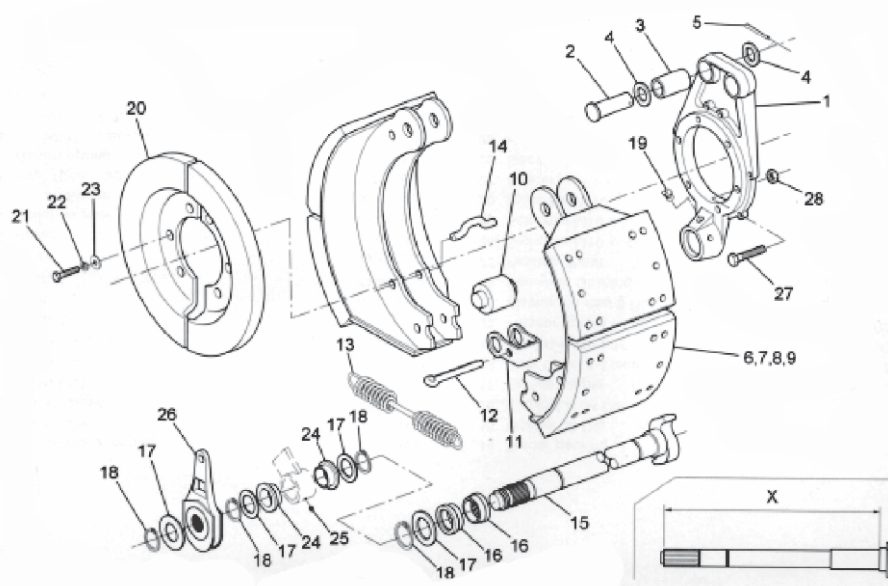
1. Torque Plate (Spider)	01TP100
2. Anchor Pin	01AP001
3. Anchor Pin Bush	01AB100
4. Lined Shoe Assy - Fabricated- 420 x 180 XEM, 420 x 130 XEM	01SH005L
5. Brake Shoe U/lined - Fabricated - 420 x 180 XEM, 420 x 130 XEM	01SH005UL
6. Brake Lining- Cam 420 x 180	01BL001B
Anchor 420 x 180	01BL002B
7. Rivets	01RV002I
8. Roller - fab Shoe	01CR001D
9. Retainer - fab Shoe	01RR001
10. Return Spring	01RS102I
11. Pin - Return Spring - Fab Shoe	01SP001
12. Return Spring - Anchor End	01RS101
13. C/Shaft - 37 Spline LH Dim X = 607 RH Dim X = 607	01SC002 01SC001
LH Dim X = 757 RH Dim X = 757	01SC010 01SC009
LH Dim X = 682	



14. Spider Bearing	01CB006
15. O-Ring	
16. Washer 42 Dia	
17. Circlip Ext. 41 Dia	
18. Grease Nipple	01GN
19. Dust Cover L/R Dust Cover 1-Piece	01DC002
20. Washer 8 Dia	
21. Setscrew M8 x16	
22. Spr. Washer 8 Dia	
23. Camshaft Bush	01CB009
24. Retainer Plate	01CB018
25. Setscrew M10 x 30	
26. Setscrew M10 x 20	
27. Nyloc Nut M10	
28. Spacer	
29. Silk Adjuster - 37 Spl	01SA001
29. Auto Silk Adj.	01SA009C
30. Bolt M14 x 55	
31. Nyloc Nut M14	

SW 420 x 180 brake assembly fabricated 'p' type shoe

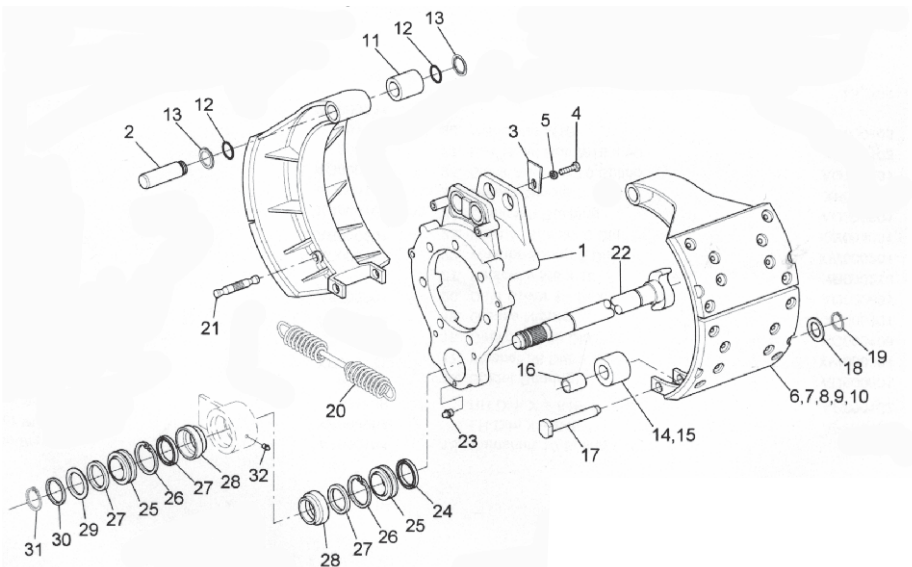
1 Torque Plate spider	01TP100
2 Anchor Pin	01AA000
3 Anchor Bush	01AA000
4 Washer 32 dia	01CW005
5 Split Pin 4 x 40	01AA000
6 Lined B/Shoe Assy 7.8.9	01SH005L
7 Unlined Brake Shoe	01SH016
8 Brake Lining cam/anc	4515
9 Rivet	01RV002
10 Roller	01CR001
11 Roller Retainer	01RR001
12 Split Pin 5,7 x 90	01SP002
13 Return Spring	01RS102I
14 Return Spring	01RS101
15 Camshaft 10 Spl LH Dim=646 RH Dim=646	01
16 Spider Bearing	01CB006
17 Washer 38 dia	01CW004
18 Circlip ext. 38 dia	01AC002
19 Grease Nipple	01GN
20 Dust cover	01DC002



21 Set Screw M6x16	01
22 Washer Spr. 6 dia	01
23 Washer spec. 6 dia	01
24 Canshaft Bush	01
25 Grease Nipple	01GN
26 Silk Adjuster 10 spl	01SA002
27 Hex Head Bolt M16 x 60	16HT008
28 Nyloc Nut M16	16HT104

HF 410 (m/benz) brake assembly

1	Torque Plate spider	01TP003
2	Anchor Pin	01AP100
3	Lock Plate	
4	Setscrew M10x 20	
5	Lock Washer	
6	Lined brake shoe assy	
	8,9,10,11,12,13,14,17	
	18.19.21	
	410 X 180/160	
7	Unlined brake shoe assy	01SH005
8	Unlined brake shoe	
9	Brake lining 410x160	01BL007M
	410x180	
10	Rivets	01RV002I
11	Anchor Bush	01AB101
12	O-Ring	
13	Washer Retainer	01SH200
14	Roller Assy 15.16	01RP001
15	Roller	
16	Roller bush	
17	Roller pin	
18	Washer 17 dia	
19	circlip ext.17	
20	Return Spring	01RS121



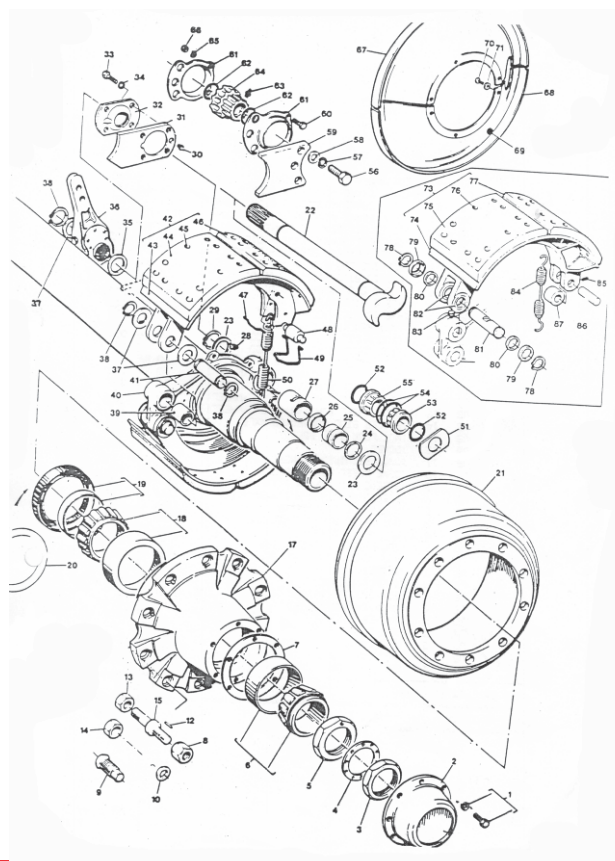
21	Pin - Ret. Spr
22	26 Spl. Cmshaft
	500 dim. L/R
23	Grease Nipple
24	Oil Seal
25	Spherical Bearing
26	Circlip
27	Oil Seal

01SC110
MERC
CAM
REPAIR
KIT

28	Seal Holder
29	Washer spacer
30	Washer retainer
	35 dia
31	Circlip ext. 34
32	Grease nipple

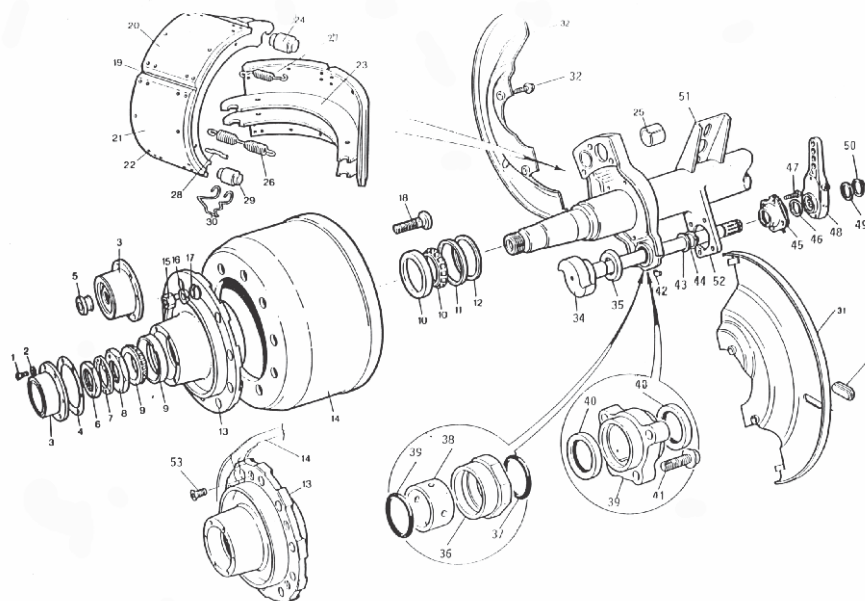
U22500 series trailer axle - for reference: enq about stock

1.	Bolt Hub Cap	10 stud 11.1/4ml
2.	Hub Cap Grease Oil	22. Camshaft
3.	Nut Lock	RH 420 brake LH 420 brake
4.	Washer Lock	23. Washer
5.	Nut Bearing Adjust	24. O-Ring
6.	Bearing Cup & Cone Outer	25. Bush
7.	Gasket Grease Oil	26. Seal
8.	Nut Wheel	27. Bush
	RH 7/8" BSF	28. Nipple Grease
	LH 7/8" BSF	29. Circlip
9.	Sleeve RH 3/4 x 1.1/8" Budd	30. Nipple Grease
	LH 3/4 x 1.1/8" Budd	31. Bracket Cam Bearing 420 brake
10.	Cone Wheel Metric Outer	32. Bearing Spherical
11.	Not required anymore	33. Capscrew Spherical Bearing
12.	Dowel	34. Washer
13.	Nut Lock 7/8" BSF	35. Washer
14.	Spacer Stud (Unbraked Axle)	36. Slack Adjuster
15.	Stud Wheel RH 7/8" BSF 2/Wheel	37. Washer
	LH 7/8 BSF 2/Wheel	38. Circlip
	RH 7/8" BSF 1/Wheel	39. Bush
	LH 7/8" BSF 1/Wheel	40. Spider Brake 420 Brake
	22mm x 1.5	41. Pin Anchor
	RH 3/4" Budd	42. Shoe & Lining Assy 420x180
	LH 3/4" Budd	43. Shoe Unlined 420x180
16.	Not required anymore	44. Lining Anchor End
17.	Hub 10 Stud 335mm PCD	45. Rivet
	8 Stud 275mm PCD	46. Lining Cam End
	8 Stud 285mm PCD	47. Pin
	10 Stud 11.1/4" PCD	48. Roller
18.	Bearing	49. Spring Retaining
19.	Seal Oil/Wear Sleeve	50. Spring Release
	Grease Oil	51. Washer
20.	Cover Oil Seal (Unbraked Axles)	52. O-Ring
21.	Drum Brake 420x180	53. Bush Inner
	10 stud 335ml	54. O-Ring
	8 stud 275ml 8 stud 285ml	55. Bush Outer
		56. Screw
		57. Washer Spring
		58. Washer
		59. Bracket Cam
		60. Screw
		61. Housing Spherical Bearing
		62. O-Ring
		63. Nipple Grease
		64. Bearing Spherical
		65. Washer Springs
		66. Nut
		67. Dust Cover Set (Both)
		68. Dust Cover Half Only
		69. Plug Rubber
		70. Screw
		71. Washer
		72. Not required anymore
		73. Shoe & Lining Assy HD
		74. Shoe Unlined HD
		75. Lining Anchor End
		76. Rivets
		77. Lining Cam End
		78. Circlip
		79. Retainer
		80. Felt-Anchor Pin
		81. Pin Anchor
		82. Bush Anchor Pin
		83. Lock Anchor Pin
		84. Spring Release
		85. Screw Lock
		86. Pin Roller
		87. Roller



TQ series trailer axle - brake assembly

1	Hub Screw Cap	01CP101
2	Washer	
3	Hub Cap Oil	
	Hub Cap Grease	01CP002
4	Gasket Oil	
	Gasket Grease	01GS002
5	Plug Vent (oil)	
6	Nut	KIT
7	Washer Lock Assy	01AN053
8	Nut Bearing Adju	
9	Outer Bearing	212049
10	Inner Bearing	218248
11	Oil Seal Oil - 46305	01OS005
	Oil Seal grease	
12	Wear Sleeve grease	
13	Hub 10 Bolt OB	01HU020
14	Br. Drum OB - 429	01BD002
15	Wheel Nut L/R	01BN060
16	spigot mount	01WN105
17	Outer wheel cone	
18	Inner wheel cone	
	Bolts L/R Twin	
	IB and OB	

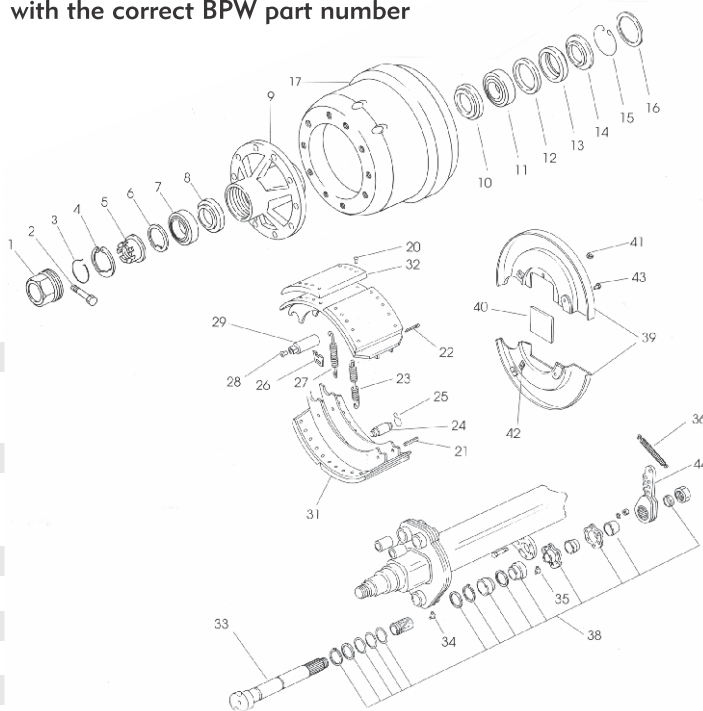


19	Lined Brake Shoe	01SH005
	Assy	
20	Brake lining CAM	01BL001
21	Brake Lining ANC	01BL002
22	Rivets	01RV002
23	Unlined Br. shoe assy	
24	Anchor Pin	01AR003
25	Anc. pin bush	
26	Return Spring	
27	Retainer Spring	

BPW ECO hub system & brake

1	Hub Cap	
2	Bolt	
3	Spring ring	
4	Outer circlip	
5	Castle Nut	
6	Washer	
7	Outer roller bearing	
8	Thrust Washer	
9	Hub inc. spl. pin	
10	Dust Cover	
11	Inner roller bearing	
12	Ring	
13	Lip Seal	
14	Thrust Washer	
15	Inner circlip	
16	Exciter ring	
17	Brake Drum	
18	Splined pin	
	stud hubs	
19	Brake Drum	
20	Brake show rivet	
21	Splined pin	
22	Split Pin	
23	Ret. Spring	
24	Roller	
25	Retention clip	
26	Shaped plate	
27	Br. ret. spring	
28	Plug	
29	Brake Pin 420x180	420x200
30	Bush	
31	Brake shoes incl	24. 25 w/lining
32	Lining (asb. free)	
33	Camshaft 625 / 731	LH / RH
34	Grease Nipple	
35	Grease Nipple	
36	Slk. adj. ret. spring	
37	Camshaft kit (o-rings)	
38	Camshaft rep. kit	
39	Dust cover	
40	Seal (120/150 dia)	
41	Plugs/seal non-abs	slot

for reference only - please enquire about stock with the correct BPW part number

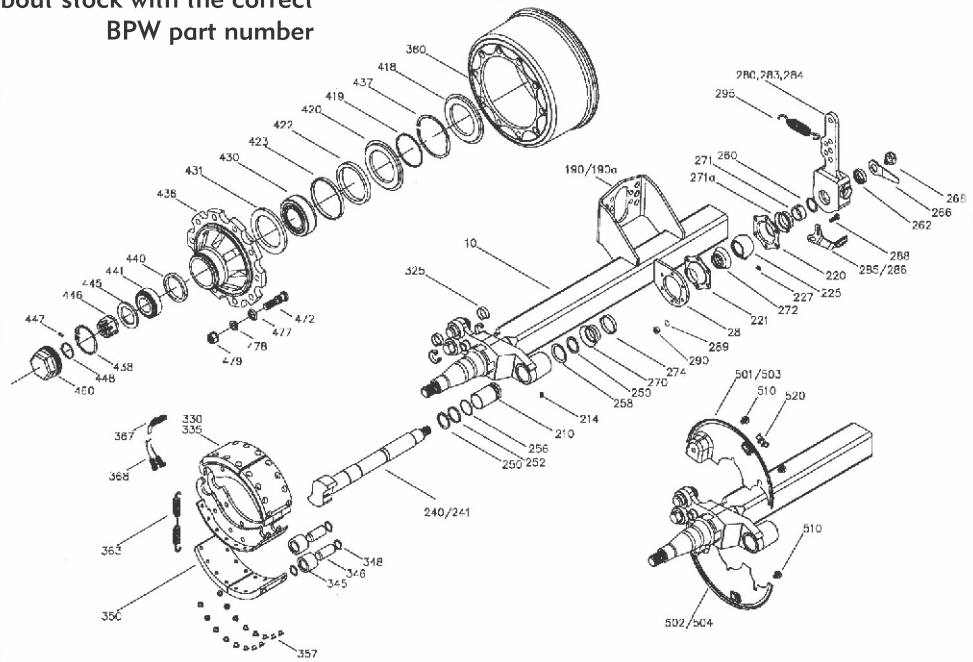


42	Plug	
43	Locking Screw	
44	Slack Adjuster	

BPW ECO plus system

for reference only - please enquire about stock with the correct BPW part number

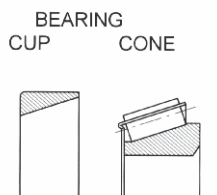
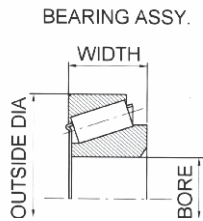
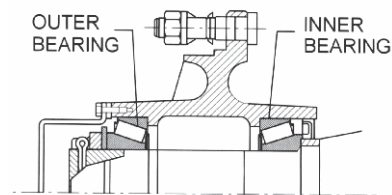
- 10 Axle beam
- 28 Plate
- 190 Booster brkt.
- 210 Bush
- 214 Grease nipple
- Camshaft holder
- 220 Bearing box
- 221 Bearing box for G.N
- Bush Assy
- 255 Bush
- 227 Grease Nipple
- 227a Cover
- 240 LH Camshaft
- 241 RH Canshaft
- 250 Circlip
- 252 Ring
- 256 O-Ring
- 258 Seal
- 262 Washer
- 266 Wear Indicator
- 268 Hex Nut
- 270 Seal
- 271 Bush
- 271a Seal
- 272 Seal
- 274 Seal
- 280 Slack Adjuster
- 285 Dist.Plata
- 295 Return spring
- 325 Locking ring



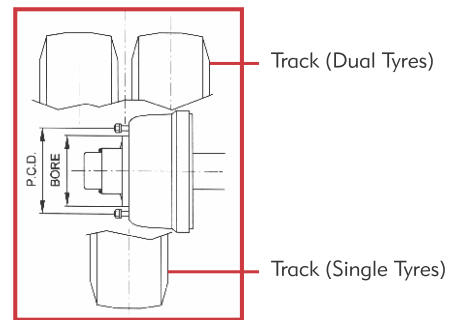
- 330 Brake Shoe compl
- 335 Br. shoe w/o lining
- 345 Roller
- 346 Bolt
- 348 Ring
- 350 Brake Lining
- 357 Rivet
- 363 Return Spring
- 367 Position ring str.
- 368 Position ring hooked
- 380 Brake Drum
- 422 Oil Seal
- 423 Ring
- 428 Seal
- 430 Roller Bearing
- Inner

BPW - hub and brake systems

HUB bearing identification



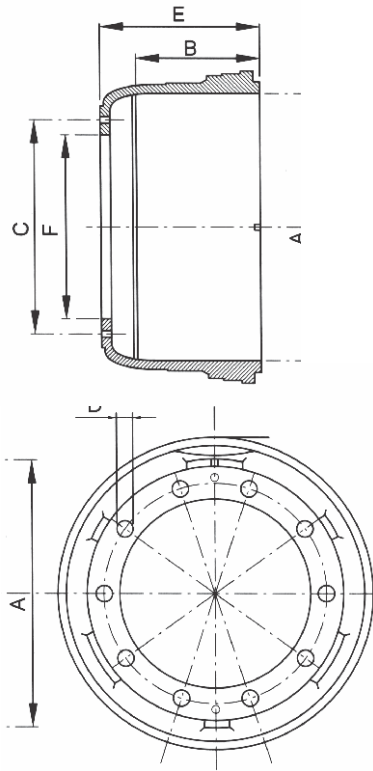
hub / wheel track measurement



dimensions

BORE	OUTSIDE DIA.	WIDTH
40	90	35.25
45	85	20.75
55	120	45.5
60	110	29.75
65	120	32.75
65	120	39
70	125	33.25
73.025	127	36.512
85.026	150.089	44.45
88.9	152.4	39.668
89.974	146.975	40
107.95	190.5	47.625

MAKE	NO	DIA.	PCD	Mounted Brake Drum	
Propar	11000	10	22	335	Inboard
Propar	11000	10	22	335	Inboard
Propar	11000	8	22	275	Inboard
Propar	15000	10	22	335	Inboard
Propar	15000	10	30	335	Inboard
Propar	11000	10	22	335	Outboard
Propar	11000	10	22	335	Outboard
Propar	11000	10	22	335	Outboard
Propar	15000	10	22	335	Outboard
Propar	15000	10	30	335	Outboard
Propar	11000	8	22	275	Inboard
Swift	8	22	275	Inboard	
Swift	8	22	275	Inboard	
Swift	8	22	275	Inboard	
Swift	8	22	275	Inboard	
Swift	10	7/8"	335	Inboard	
Swift	10	22	335	Inboard	
Swift	10	22	335	Outboard	
Swift/HFT	10	22	335	Outboard	
HFT	10S	10	7/8"	335	Inboard
HFT	10S	10	7/8"	225	Inboard
HFT	10MT	10	7/8"	335	Inboard
HFT	8S	8	7/8"	375	Inboard
HFT	10MT	8	7/8"	375	Inboard



KEY

- A. Brake Drum Diameter
- B. Brake Shoe Path
- C. PCD Pitch Circle Diameter
- D. Stud Hole Diameter
- E. O/A Height Drum
- F. Spigot Bore Diameter

BRAKE drum identification

Brake Size	Make	A	B	C	D	E	F
420 x 180 10 Stud	HFT	419	190	335	24	246	290
420 x 180 10 Stud	HFT	419	190	335	32	246	290
420 x 180 10 Stud	HFT	419	190	335	22	246	290
420 x 180 10 Stud	Swift	419	190	335	24	246	295
420 x 130 10 Stud	HFT	419	142	335	24	198	290
420 x 130 10 Stud	HFT	419	142	335	24	219	290
410 x 180 10 Stud	MB	410	190	335	24	280	298
310 x 205 8 Stud	HFT	311	250	275	24	263	230
310 x 205 8 Stud	HFT	311	250	275	20	263	230
395 x 180 10 Stud	HFT	394	217	335	22	238	290
395 x 150 10 Stud	HFT	394	170	335	22	208	290
395 x 150 10 Stud	Swift	396	177	335	24	196	295
395 x 150 8 Stud	HFT	394	170	275	20	208	230
395 x 150 8 Stud	Swift	396	177	275	24	196	235
395 x 130 10 Stud	HFT	394	140	335	22	170	290
395 X 180 8 Stud	HFT	394	140	275	20	170	230
355 x 90 8 Stud	HFT	355	110	275	20	120	230
355 x 90 8 Stud	Swift	357	100	275	24	128	235
355 x 90 8 Stud	Swift	357	100	275	20	128	235
310 x 140 10 Stud	HFT	311	150	225	20	235	187
310 x 140 8 Stud	HFT	311	215	275	20	228	230
310 x 140 8 Stud	Swift	311	177	275	24	190	235



TORQ OF THE TOWN!

THE BIG MAX 'PRO-TORQ' AXLE... THE ENVY OF THE INDUSTRY

TRIED, TESTED & PROVEN...FINALLY AN AXLE WHICH GIVES YOU ALL OF THE FOLLOWING: LONGER TYRE THREAD-LIFE, EXTENDED WHEEL SEAL & BEARING SERVICE INTERVALS, IMPROVES ABS, COST SAVING ON SERVICES, TIGHTER CONTROL ON BEARING ADJUSTMENT & FAST INSTALLATION...AND WITH LESS GREASE USAGE & LESS COMPONENTS... IT'S THE GREENEST AXLE AROUND.

"Some time ago we had three trailers refitted with the TSE axle. At first we were sceptical, because we load in-field & the underfoot conditions are very bad. We did not think that the axle would be able to handle the pressure of the rough terrain but we were wrong...OH BOY!! We were in for a good surprise !!! The axle went beyond all expectations and are still in very good condition.
The TSE axles were also checked and found that with the approx. 300000 km done, nothing needed to be replaced, & I MEAN NOTHING, where the other makes of axles all needed new bearings and bushes. I'd like to conclude by stating that the TSE axle is a good, strong, reliable product that is well designed and give's good mileages and we, at Sentrans, would recommend this product to any company." - J. LLOYD - (Fleet Man. - Sentrans) - referring to the Pro-Torq axle.

"As a TSE Big Max Distributor in the Zululand area, it makes us, as VNS Spares, proud to service our customers with quality products. We are proud to be associated with TSE Big Max." - Nic Van Zyl - (VNS Spares - Richardsbay)

"Cargo Carriers International Hauliers has been running the Bigmax Pro-Torque axle for close to 200 000 km since being fitted to our various trailer combinations. TSE Big Max offered us the opportunity to run & test our first Pro-Torque axle end nut assembly, initially there was huge scepticism as to this "Split Pin-less" unit, coupled with the comments that it will never last in Africa.
To date this axle hub assembly has never given any mechanical problems. Infact putting it mildly, the trailer unit mentioned has been purposely abused, to measure the longevity of the design, in an operation North of Central Africa, and to date is still operational. The normal preventative maintenance practices, to the axle itself, brake overhauls etc have only been conducted through out it's life, we expect to have more trouble free Trucking in the kilometers to come."
- Mr. Arthur E. Morta (Cargo Carriers International Hauliers)

THE BIG MAX 'PRO-TORQ' AXLE IS IDEAL FOR :

- FORESTRY - SUGAR CANE
- LONG DISTANCE HAULAGE.
- CROSS BORDER CONDITIONS
- RUGGED & EXTREME CONDITIONS

TOOL SOCKET
4 13/16 - 8 Point 102mm

AXLE NUT APPLICATIONS	THREAD SIZE	OUTER/INNER BEARING PART NO
TRAILER AXLE - BIG MAX AXLE	3.480" - 12 12 unc - 88.4mm	HM 518410 HM 518445

The Big Max PRO-TORQ axle's perfect combination comprises of Shell Grease, Timken Bearings and Pro-Torq Nut

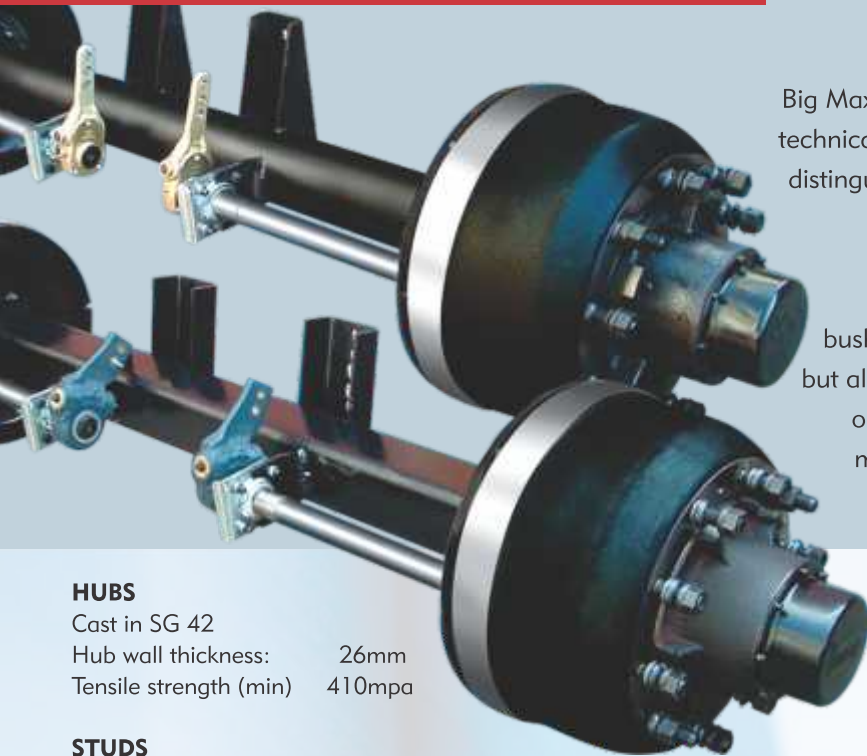


BIG MAX AXLES ROUND & SQUARE

• available in 8 stud and 10 stud



BIG MAX trailer axle: specifications



Big Max Axles are manufactured at our works to the latest technical standards and precise production tolerances. We distinguish ourselves not only through the exceptional use of high grade raw materials and enhanced design features such as outboard brake drums, equal size large diameter wheel bearings, dust proofed seal bushing and self aligning spherical camshaft bearings, but also through outstanding attention to detail eg. both our brake drum and hub are machined externally to minimise imbalance and resultant wear and tear on suspension components as well as tyres.

HUBS

Cast in SG 42
Hub wall thickness: 26mm
Tensile strength (min) 410mpa

STUDS

Standard 10 Bolt M22 x 1.5mm pitched studs in EN19 Heat treated.
Positive locking on machine shoulder.

BRAKE DRUMS

Material: GA 250 + 5% CU
Tensile Strength 250mpa
Internal diameter 420mm

BRAKES

Air operated 420 x 180mm "S" cam brakes.
One piece Spider bolted to collar on axle, bushed and dust proofed Fully machine heat treated camshafts rotating in self-aligning spherical bearings.

BRAKE LININGS

4515 Cam and Anchor
Max Thickness: 17mm
Min Thickness 12.5mm
Nominal Thickness 14.7mm

OIL SEAL

Green Metal Seal

GREASE – BCL GP Super X Bearing Grease

BRAKE DATA

Max Torque input	1333Nm
output	1800Nm
Input/Output Ratio	13.5%

AXLE BEAM

Drawn Tube 125mm (127mm) dia.
Wall Thickness 17.5mm
Carbon Mang. Steel ST 52
105 / 112 Square

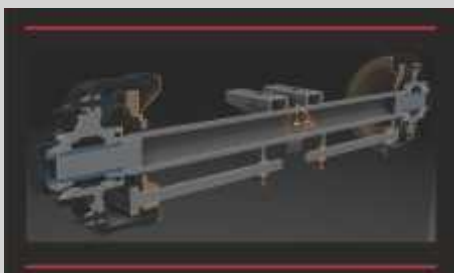
TRACK and MASS

Standard Track 1830mm
Also available in: 1930mm
1910mm
And any track length thereafter

WHEEL BEARINGS

Type: 518445/10 Taper Roller
Size: OD: 152.4mm, ID: 88.9mm, Width: 40mm
Static Capacity: 20 600 kg
Dynamic Capacity: 23 000 kg
Bearing spacing back to back: 115 mm

Available in Lift and Non-Lift
Available in 8 stud and 10 stud





BIG MAX TAG AXLE

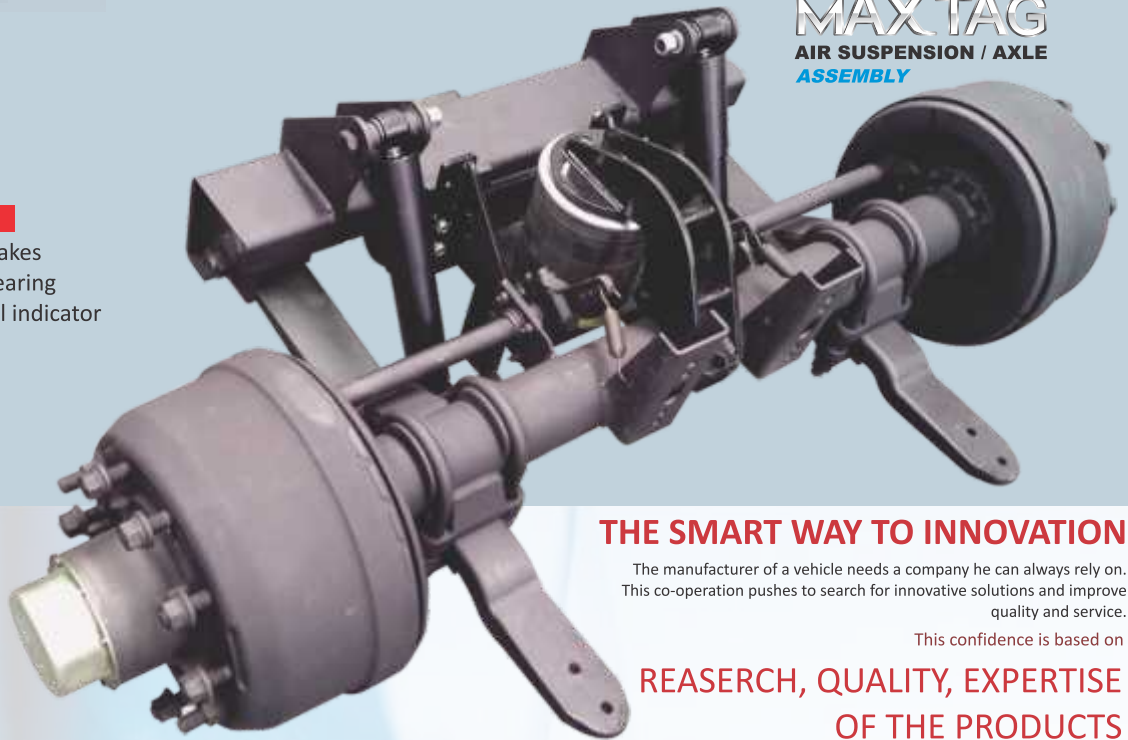
• available in lift and non-lift



PRO-TORQUE AXLE

The PRO-TORQUE Nut takes the guesswork out of bearing adjustment, and NO dial indicator is required.

- NO AXLE NUT!
- NO AXLE WASHER!
- NO SPLIT PIN!



MAXTAG
AIR SUSPENSION / AXLE
ASSEMBLY

THE SMART WAY TO INNOVATION

The manufacturer of a vehicle needs a company he can always rely on. This co-operation pushes to search for innovative solutions and improve quality and service.

This confidence is based on

REASERCH, QUALITY, EXPERTISE OF THE PRODUCTS

HUBS

Cast in SG 42
Hub wall thickness: 26mm
Tensile strength (min) 410mpa

STUDS

Standard 10 Bolt M22 x 1.5mm pitched studs in EN19 Heat treated. Positive locking on machine shoulder.

BRAKE DRUMS

Material: GA 250 + 5% CU
Tensile Strength 250mpa
Internal diameter 420mm

BRAKES

Air operated 420 x 180mm "S" cam brakes. One piece Spider bolted to collar on axle, bushed and dust proofed Fully machine heat treated camshafts rotating in self-aligning spherical bearings.

BRAKE LININGS

4515 Cam and Anchor
Max Thickness: 17mm
Min Thickness 12.5mm
Nominal Thickness 14.7mm

OIL SEAL

Green Metal Seal

GREASE – BCL GP Super X Bearing Grease

BRAKE DATA

Max Torque input 1333Nm
output 1800Nm
Input/Output Ratio 13.5%

AXLE BEAM

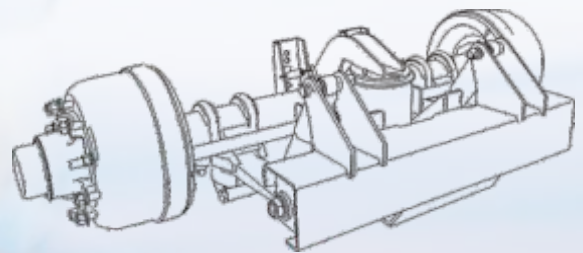
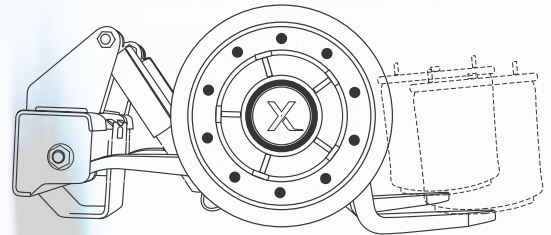
Drawn Tube 125mm (127mm) dia.
Wall Thickness 17.5mm
Carbon Mang. Steel ST 52
105 / 112 Square

TRACK and MASS

Standard Track 1830mm
Also available in: 1930mm
1910mm
And any track length thereafter

WHEEL BEARINGS

Type: 518445/10 Taper Roller
Size: OD:152.4mm, ID: 88.9mm, Width: 40mm
Static Capacity: 20 600 kg
Dynamic Capacity: 23 000 kg
Bearing spacing back to back: 115 mm



CERTIFIED PERFORMANCE

The Big MAX axle meet all the SABS requirements and their characteristics are recognised throughout Africa. Thus the manufacturers of trucks and trailers can fit our product with total peace of mind and achieve visibility throughout AFRICA

BIG MAX LOW BED AXLE

• available in 8 stud and 10 stud



BIG MAX low bed axle: specifications



HUBS

Cast in SG 42
 Hub wall thickness: 26mm
 Tensile strength (min) 410mpa

STUDS

Standard 10 Bolt M22 x 1.5mm
 pitched studs in EN19 Heat treated.
 Positive locking on machine shoulder.

BRAKE DRUMS

Material: GA 250 + 5% CU
 Tensile Strength 250mpa
 Internal diameter 311mm

BRAKES

Air operated 420 x 180mm "S" cam brakes.
 One piece Spider bolted to collar on axle,
 bushed and dust proofed Fully machine heat
 treated camshafts rotating in self-aligning
 spherical bearings.

BRAKE LININGS

4649 Cam and Anchor	CAM	ANC
Max Thickness:	18mm	17mm
Min Thickness	16mm	9.5mm
Nominal Thickness	17mm	13.25mm

OIL SEAL

Self rotating Green Metal Seal

GREASE – GP Super X LX 2EP Grease

AXLE BEAM

Drawn Tube 125mm (127mm) dia.
 Wall Thickness 17.5mm
 Carbon Mang. Steel ST 52
 105 / 112 Square

TRACK and MASS

Standard Track rnd 1830mm
 Also available in: Rnd 1910mm
 And any track length thereafter

WHEEL BEARINGS

Type:	Taper Roller
Size: OD:138mm, ID: 88mm, Width: 40mm	
Static Capacity:	20 600 kg
Dynamic Capacity:	23 000 kg
Bearing spacing back to back:	115 mm



Available in Lift and Non-Lift
 Available in 8 stud and 10 stud



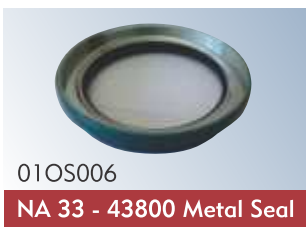
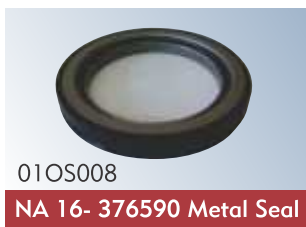
SLACK ADJUSTERS

contact our sales team for further information on slack adjusters



OIL SEALS

TSE BIG MAX carries a full range of high quality oil seals to meet all your requirements. There are many sub-standard oil seals being sold within the industry which poses a great danger as it leads to axle failure.



brake discs & brake pads

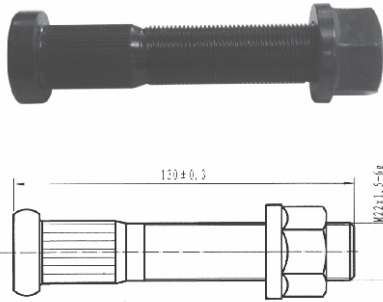


PROPAR STUD 001



01BN015C

PROPAR LONG STUD



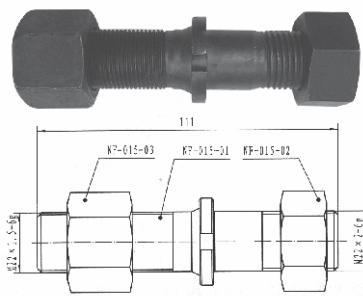
01BN015A

PROPAR STUD - SHORT



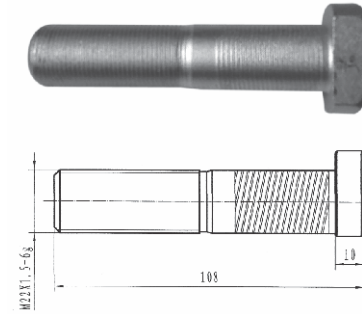
01BN015S

BPW DUAL STUD



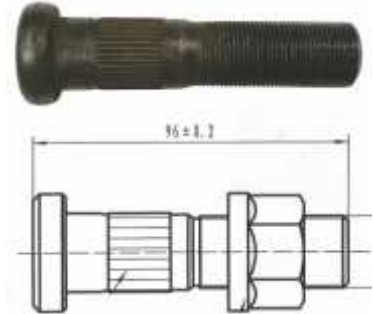
01BN026C

BPW STUD 032



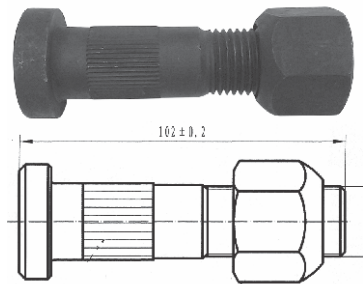
01BN022 - D

PROTEA INBOARD F/THREAD



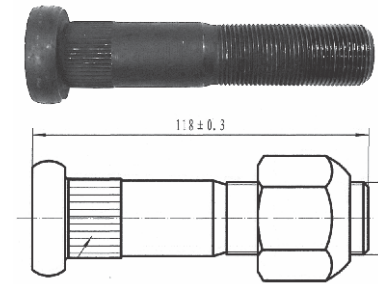
01BN055 - D

PROTEA INBOARD COURSE THREAD



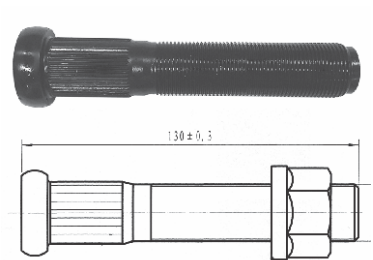
01BN015E

PROTEA O/BOARD

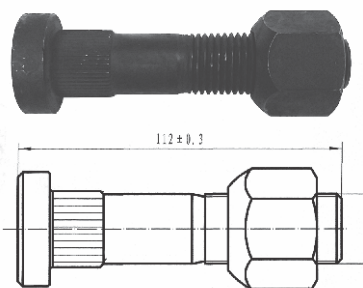


01BN052D / 051D

PROTEA STUD - LONG

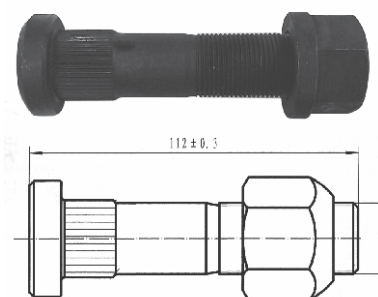


YORK STUD - THICK THREAD



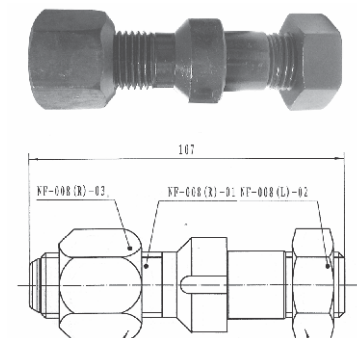
01BN025D-R / L

YORK STUD - FINE THREAD



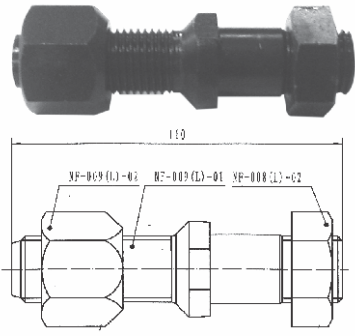
01BN025

PROTEA U SER LH/RH



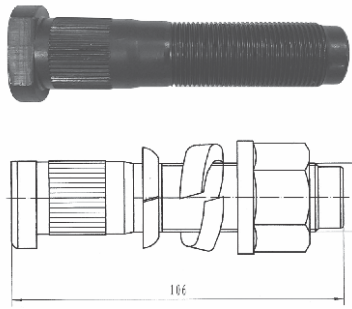
01BN048D / 047D

SW. DUAL STUD LH/RH



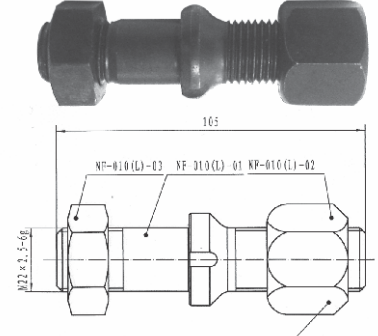
01BN003C / 004C

SWIFT STUD - CUT ON HEAD



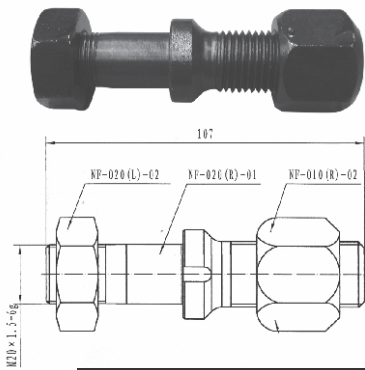
01BN023 / 023D

HEN. DUAL STUD LH/RH



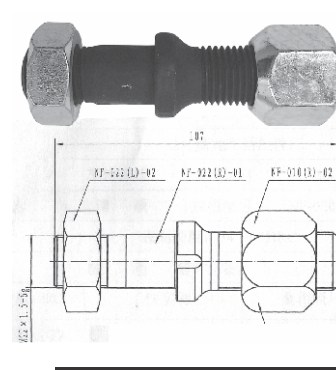
01BN0012D / 011D

HEN 20mm STUD LH/RH



01BN068D / 067D

HEN M22 STUD



01BN011C / 012C

HINO D-TYPE FR (SHORT)



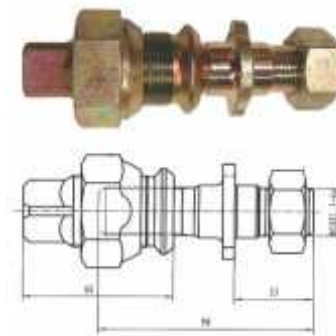
01BN042F / 043F

HINO D-TYPE - LONG



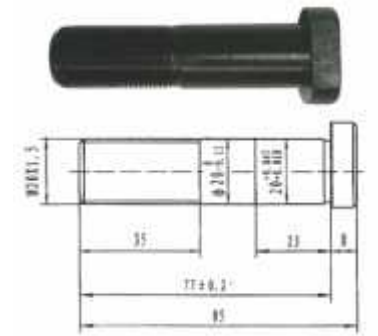
01BN042R / 043R

HINO WITH LIP



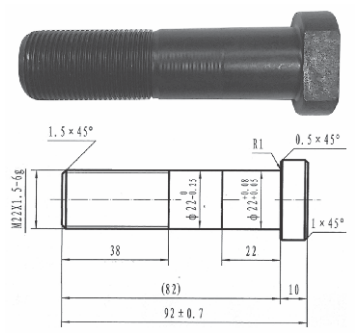
01BN040 / 041D

MERC STUD - M20 x 77



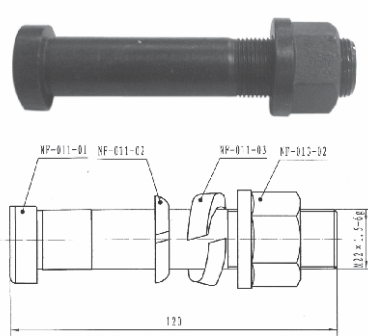
01BN127

MERC STUD 22 x 80



01BN020 D

110 MERC STUD



01BN022C

MERC ACTROS STUD



01BN085

Popular Wheel Studs & Nuts

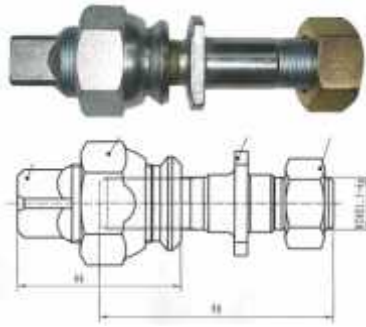
Range of popular Wheel Studs & Nuts

MERC - M22 x 148



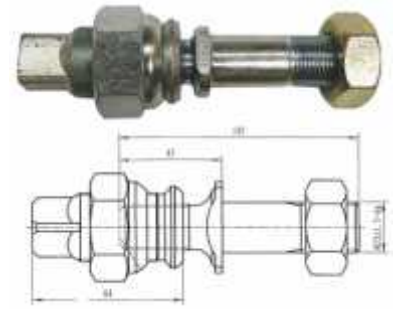
01BN022L

NISSAN CK CW



01BN045R / 044R

NISSAN BUS CW



01BN121R / 120R

NISSAN BUS FRONT



01BN120

NISSAN BUS REAR



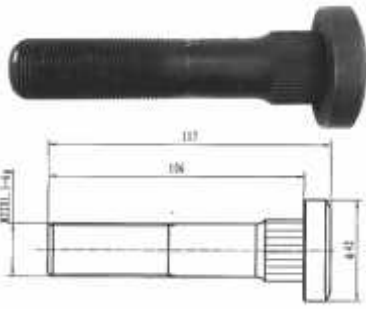
01BN120DR

DAF / INTERNATIONAL 077



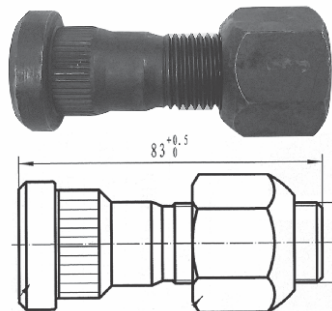
01BN024D

DAF / EAGLE STUD



01BN024FD / 024RD

ERF STUD 014



01BN054D / 053D

FREIGHTLINER



01BN129C

MITSUBISHI CANTER STUD



01BN010 / 009

INTERN'AL 3 PC - UNDER HEAD

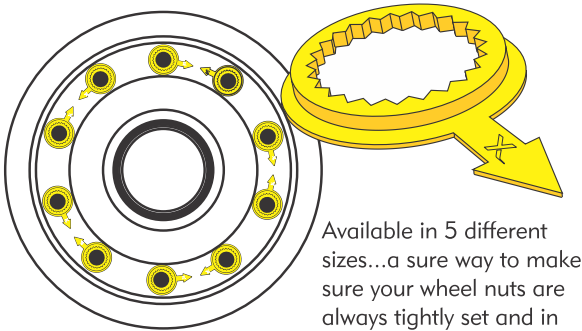


01BN059D / 058D

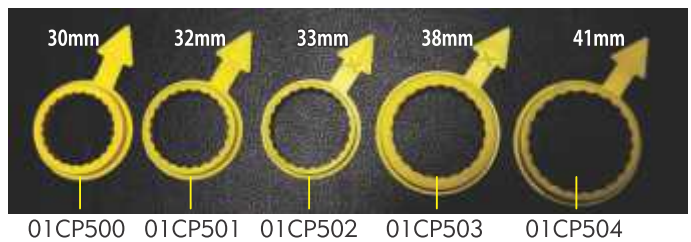
Popular Wheel Studs & Nuts



WHEEL cones



wheel nut torque indicators



Axle nuts & accessories



Camshaft components

01CB020 	01CB018 	01CB017 	01CB014 	01CB015 
HEN Propar 160 series/Meritor (ROR)	HEN P, PS, PSL	spherical cam bracket assembly	ROR TM, TE	ROR TM, TE
01CB009 	01CB006 	01CB009 - 38mm 	01CB024 	
HEN Propar, Hend'son 160 series/Meritor (ROR), TM	HEN P, PS, PSL	Hendrickson 160, 2000	Meritor (ROR), TM	BPW H series
	01CB010 - 42mm 	01CB009 - 38mm 		
BPW NR series	Meritor (ROR) TM	Meritor (ROR) TM	Meritor (ROR) TE, LM	Meritor (ROR) TE, LM

brake shoes and brake linings

we carry a full range of quality industry approved brake linings. All popular linings & brake shoes for:

- 4515 • MP 31 • MP 32 • MP 36
- ZA 445 • GG 83



BRAKE SHOE fittings

			01RR001 	01RR001I 
BPW Cam Roller Retainer	BPW Cam Roller Retainer	BPW	HEN New style with Pin	Meritor (ROR)
				01SP001 
Meritor (ROR) Retainer	BPW	BPW	HEN	HEN/Meritor (ROR)

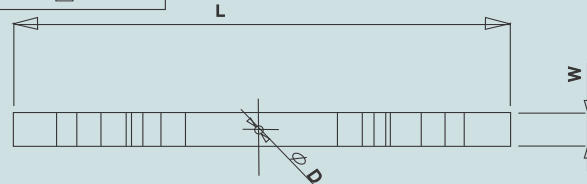
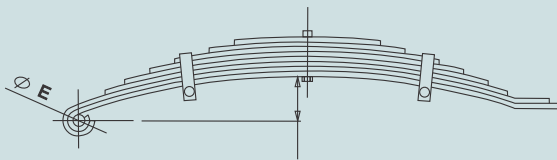
LEAF SPRINGS

CODE	No. of Blades	C(mm)	OD(mm)	OE(mm)	L(mm)	T(mm)	W(mm)	Max Load/Pair	Rate kg/mm
S05/27	5	80	12.5	12.5	685	6	44.5	950kg	5.936
S06/27	6	80	12.5	12.5	685	6	44.5	1150kg	7.188
S08/27	8	80	12.5	12.5	685	6	44.5	1500kg	9.725
S10/27	10	80	12.5	12.5	685	6	44.5	1800kg	11.25
S08/36	8	80	12.5	12.5	1020	8	50	2000kg	12.5
S10/36	10	80	12.5	12.5	1020	8	50	2500kg	15.625
S12/40	12	95	16	20	1100	10	70	6000kg	31.579
S13/40	13	95	16	20	1100	10	70	8000kg	42.105



SPRING KITS

CODE	No. of Blades	Max Load/pr	L (mm)	Bl. size	supp.Axle
SKIT3000	5	3000kg	1100mm	70 x 10	<input type="checkbox"/> 55
SKIT4000	8	4000kg	1100mm	70 x 10	<input type="checkbox"/> 60
SKIT6000	12	6000kg	1100mm	70 x 10	<input type="checkbox"/> 70
SKIT8000	13	8000kg	1100mm	70 x 10	<input type="checkbox"/> 80



HIGH SPEED TRAILER & CARAVAN WHEELS

CODE	TYPE	DESCRIPTION	STUD FIXING	OFF SET
10-4.5	4.5B X 10	White Spoked SDC	4/67/100	-5mm
13.4.5	4.5J X 13	White Spoked SDC	5/72.5/114.3	0mm
13-4.5J	4.5J X 13	White Spoked SDC	4/67/100	0mm
14-6.0J	6.0J X 14	White Spoked SDC	4/67/100	14mm
15-7.0	7.0J X 15	White Spoked SDC	5/83.5/114.3	3mm
16-7.0	1.0J X 16	White Spoked SDC	6/108.9/139.7	5mm

MUDGUARDS

CODE	DESCRIPTION	WHEEL SIZE
13"	Un-galvanised Single	10" to 13"
14"	Un-galvanised Single	14"



AGRI-TRACTOR & IMPLEMENT WH.

14-5.0J	5.0J X 14	SDC	5/110/165.1	0
15-8.0W	8.0W X 15	SDC	5/110/165.1	0
16-8.0W	8.0W X 16	SDC	6/161/205	0
18-11.0	11.0 X 18	SDC	8/221/275	0

ACCESSORIES

CODE	Description	CODE	Description
ELKOM	Light Kombi	EADRT	Reflective Tape
EI08	Light Kombi Square	Cv1700	1700mm Chevron
LB01P	Light Box - 2 Hole	Z007	Double Disc Holder
E7PMPC	7 Pin Male Plug	Z015	Anti-Luce shrt w/nut
E7PFMPC	7 Pin Female Plug	Z016	Anti-Luce lng w/nut
EC5C	5 core 0.75 cable	Z022	Drop Side Hinge
EC7C	7 core 0.75 cable		





FULL BEAM AXLES WITHOUT BRAKES

CODE	LOAD CAP	HUB	BEAM	H/H
01AGX	900kg	4/61/100	□ 40	1401 to 1850mm H/S
01AGX	900kg	4/61/100	○ 40	1701 to 1850mm H/S
01AGX	1600kg	optional	□ 50	up to 1600mm H/S
01AGX	3000kg	optional	□ 55	up to 1400mm L/S
01AGX	4000kg	optional	□ 60	up to 2100mm L/S
01AGX	6000kg	optional	□ 70	up to 2100mm L/S

FULL BEAM AXLES WITH BRAKES (CABLE) - HIGH SPEED

CODE	LOAD CAP	HUB	BEAM	BRAKE	BRAKE CAP	H/H
01AGX	900kg	optional	○ 40	200x50	1600kg	up to 2300mm
01AGX	1600kg	optional	□ 45	200x50	1600kg	1701 to 1950mm
01AGX	1800kg	optional	□ 50	250x40	1800kg	1601 to 1900mm
01AGX	2500kg	optional	□ 50	250x50	2500kg	up to 2000mm
01AGX	3000kg	optional	□ 55	250x50	2500kg	up to 2300mm
01AGX	3500kg	6/160.205	□ 60	305x80	3500kg	up to 2100mm

FULL BEAM AXLES WITHOUT BRAKES

CODE	LOAD CAP	HUB	BEAM	H/H
AF55A	3000kg	5/110/165.1	□ 55	1675mm L/S
AF60A	4000kg	6/160/205	□ 60	1675mm L/S
AF70A	6000kg	6/160.8/205	□ 70	1800mm L/S
AF80C	8000kg	8/220/275	□ 80	1830mm L/S
AF90C	10000kg	10/275/335	□ 90	1900mm H/S

FULL BEAM AXLES WITH BRAKES (FLAT CAM)

CODE	LOAD CAP	HUB	BEAM	BRAKE	H/H
AFB60C	4000kg	6/160/205	□ 60	300x60	1700mm L/S
AFB70C	6000kg	6/160.8/205	□ 75	300x60	1800mm L/S
AFB80C	8000kg	8/220/275	□ 80	350x60	1830mm L/S
AFB90C	10000kg	10/275/335	□ 90	400x80	1800mm L/S H/S
AFB100C	14000kg	10/275/335	□ 100	400x80	2050mm H/S



COUPLERS - TOW HITCH L/COUPLER - 750kg

CODE	CAPACITY	TYPE	HEAD	BODY TYPE
CBK2000C	1100 to 2000kg	Braked	50mm ball	Delta
CBK2700B	1600 to 2000kg	Braked	50mm ball	Delta
CBK3500B	2700 to 3500kg	Braked	50mm ball	Delta



PARKING JACKS

CODE	OUT TUBE	INNER TUBE	STROKE	MASS	LOAD	LENGTH
J0007	□ 60mm	□ 42mm	255mm	6.0kg	600kg	590mm
J0010	□ 80mm	□ 70mm	300mm	13.0kg	1200kg	670mm
J0015	□ 70mm	□ 60mm	200mm	12.6kg	4000kg	485mm
J0016	□ 70mm	□ 60mm	170mm	13.8kg	6000kg	460mm
J0017	○ 51mm	○ 45mm	250mm	5.6kg	900kg	430mm
J0018	○ 57mm	○ 50mm	370mm	6.5kg	1300kg	560mm



JOCKEY WHEELS

CODE	Description	Max Load	STROKE	SHAFT	WHEEL
JCC48	Pressed Clamp	-	-	60mm	-
JCC60	Pressed Clamp	-	-	60mm	-
JCB48/8S	Jockey Wheel	150kg	200mm	48mm	8" Steel Single / Double
JCB60/8D	Jockey Wheel	300kg	200mm	60mm	8" Steel Double / Single

TURN TABLES

CODE	Max Load	C(mm)	Outside O	Inner O	Height
TL1-0400	400kg	up to 25km/h	400mm	300mm	50mm
TL1-0650	1100kg	up to 40km/h	650mm	550mm	55mm
TL2-0900	3500kg	up to 40km/h	900mm	780mm	65mm
TL2-1050	5000kg	up to 40km/h	1050mm	925mm	70mm
TL3-1100	8000kg	up to 40km/h	1100mm	970mm	80mm
TL5-1100	10000kg	up to 40km/h	1100mm	950mm	90mm
TL6-1100DT	20000kg	up to 105km/h	1100mm	940mm	92mm



A WHOLE NEW RANGE...THE SAME EXCELLENT QUALITY

AGRICULTURAL MINI TRAILERS AXLES ACCESSORIES



WE'VE GOT YOU COVERED
FROM COUPLER TO TAIL LIGHT

AXLES - UNBRAKED (HIGHSPEED)

- 900 KG
- 1200 KG
- 1600 KG
- 2500 KG
- 3000 KG



jockey wheels & parking jacks



hubs



mudguards



couplers

AGRICULTURE AXLES

- 4 TON AXLES
- 6 TON AXLES
- 8 TON AXLES
- 9 TON AXLES
- 14 TON AXLES



rims



springpacks



u-bolt kits

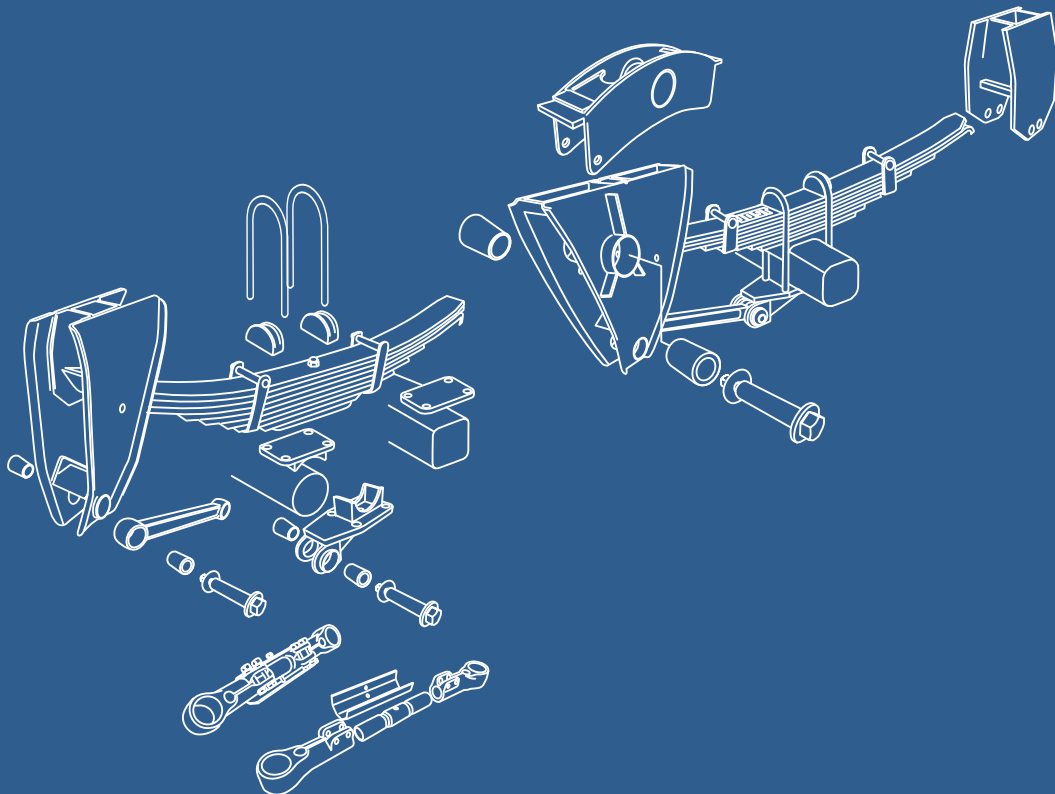
NOW SUPPLIERS OF:

- AXLES
- RIMS (AGRICULTURE)
- RIMS (PRO-WHITE)
- TURNTABLES
- PARKING JACKS
- JOCKEY WHEELS
- COUPLERS (HITCHES)
- 27" & 36" S/BLADES
- U-BOLT KIT (RND & SQ)
- ELECTRICAL
- MUD GUARDS

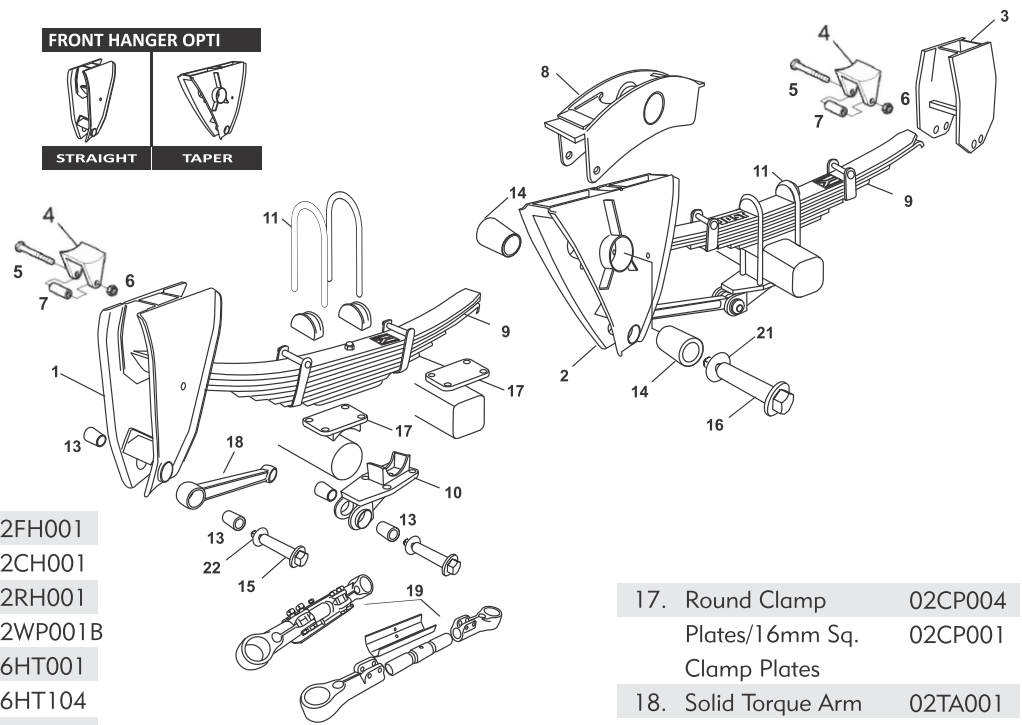


TRAILER SUSPENSIONS

BIG MAX Suspensions are strong, robust and long lasting... the ideal suspension for the rough South African roads. BIG MAX suspensions are available in over slung and under slung, in 8 blade and 9 blade spring packs. Supplied with extreme service polyurethane torque arm and rocker bushes. The Torque arm and rocker pins are of EN 9 Grade. With BIG MAX suspensions you are guaranteed quality, reliability and excellent after sales service.



MAX suspension - F Suspension (overslung)

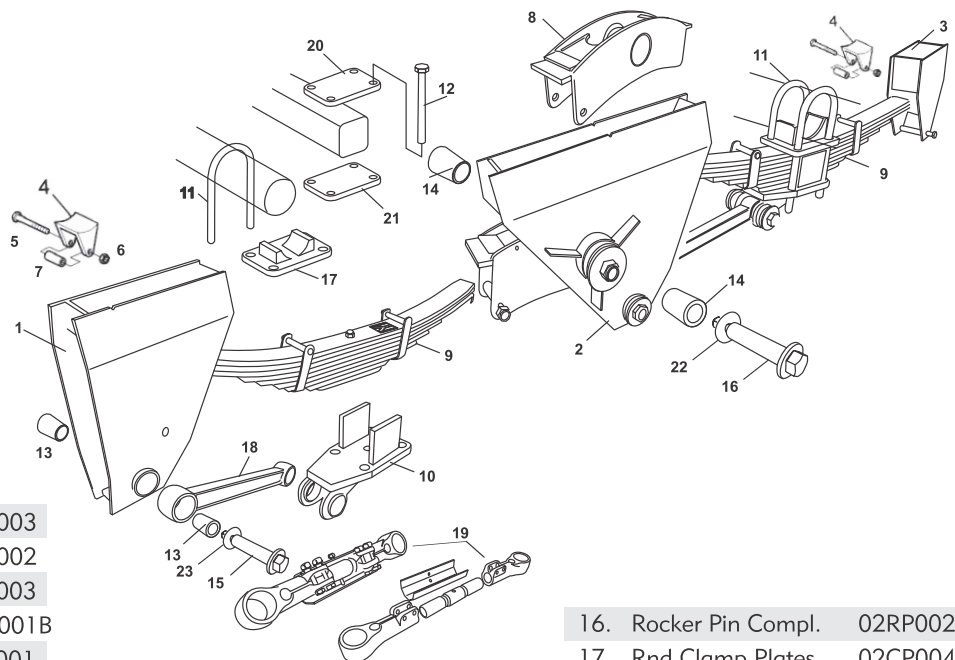


1. Front Hanger	02FH001
2. Centre Hanger	02CH001
3. Rear Hanger	02RH001
4. Wear Plate Ass'y	02WP001B
5. M16 x 150 Bolts	16HT001
6. Nyloc Nut M16	16HT104
7. Sleeve	02WP008
8. Rocker	02EQ001
9. Spring Pack 8 BL	02SP100
9 Blade	02SP101
M16 x 130 Bolts	16HT0471
10. Rnd /Sq. Axle Seats	02AS002/1

11. 8/9 Blade U - Bolt	02UB001B
13. Poly' Torque Arm Bush	02BH004T
14. Poly' Rocker Bush	02BH001C
15. Torque Arm Pin - Compl.	02TP001
16. Rocker Pin Complete	02RP002B

17. Round Clamp	02CP004
Plates/16mm Sq.	02CP001
Clamp Plates	
18. Solid Torque Arm	02TA001
19. Adjustable	02TA005
Torque Arm	
20. Strongback	02SB1001
21. Rocker Pin Washer	02RP004F
22. Torque Arm	02TP002
Pin Washer	

MAX suspension - J Suspension (underslung)

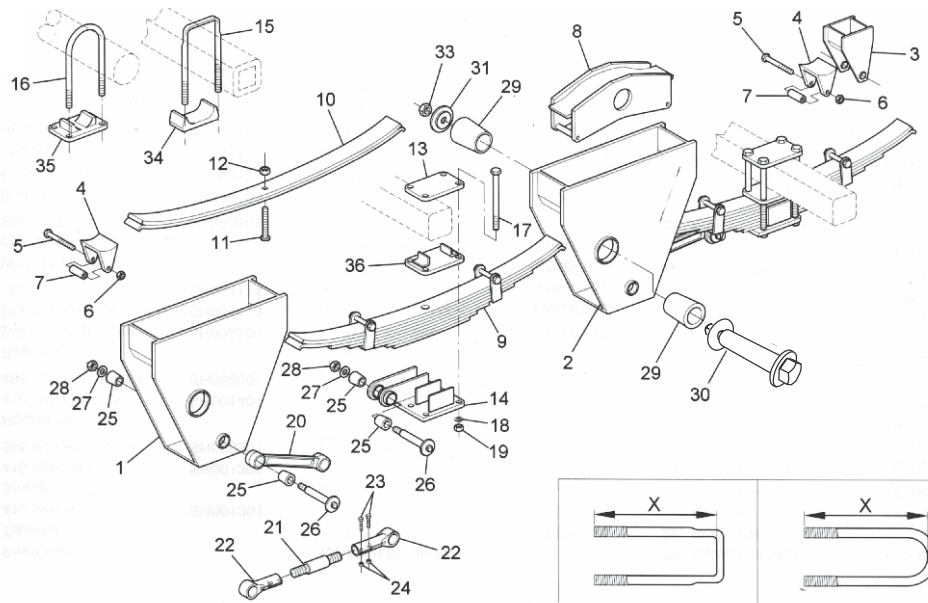


1. Front Hanger	02CH003
2. Centre Hanger	02CH002
3. Rear Hanger	02RH003
4. Wear Plate Ass'y	02WP001B
5. M16 x 150 Bolts	16HT001
6. Nyloc Nut M16	16HT004
7. Sleeve	02WP008
8. Rocker	02EQ001
9. Spring Pack - 9 Bl.	02SP101
10. J - Axle Seats	02AS003B
M16 x 130 Bolts	16HT0471

11. U - Bolt	02UB003B
12. Bolt - 105/112 Sq Axle	16HT301
M22x325	
13. Poly'ane Torque Arm Bush	02BH004T
14. Poly'ane Rocker Bush	02BH001C
15. Torque Arm Pin - Compl.	02TP001

16. Rocker Pin Compl.	02RP002B
17. Rnd Clamp Plates	02CP004
18. Solid Torque Arm	02TA001
19. Adj. Torque Arm	02TA005
20. 16mm Cl/ Plates	02CP004
21. 20mm Cl/ Plates	02CP007
22. Rocker Pin Washer	02RP004F
23. Torque A/Pin Washer	02TP002

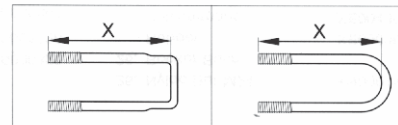
MAX L - Suspension - Underslung



- | | |
|---------------------------|----------|
| 1. Front Hanger L/R | 02FH004 |
| 2. Centre Hanger L/R | 02CH004 |
| 3. Rear Hanger | 02RH005 |
| 4. Wear Plate Ass'y | 02WP001 |
| 5. M16 x 150 Bolts | 16HT001 |
| 6. Nyloc Nut M16 | 16HT104 |
| 7. Sleeve | 02WP008 |
| 8. Rocker | 02EQ001 |
| 9. Spring Pack | 02SP100 |
| 8/9 Blade | 02SP101 |
| M16 x 130 Bolts | 16HT0471 |
| 10. Main Blade Set | 02SP205 |
| 11. Centre Bolt | 02CB002 |
| 12. Nut | |
| 13. Upper Clamp Plate | 02CP008 |
| 14. Axle Seat | 02AS015 |
| 15. M22 x 350 Bolts (sq.) | |

- | | |
|--------------------------|------------|
| 16. U-Bolt (Round) | 02UB005 |
| 17. M22 Bolt | 16HT002 |
| 18. Washer 22 dia. | 16HT203 |
| 19. M22 Nyloc Nut | 16HT102 |
| 20. Solid Torque Arm | 02TA001 |
| 21. Adjuster | 02TA005 |
| 22. Torque Arm End - L/R | 02TA025R/L |
| 23. M12 x 55 Bolt | 16HT061 |

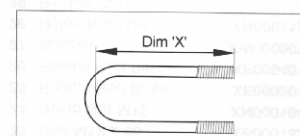
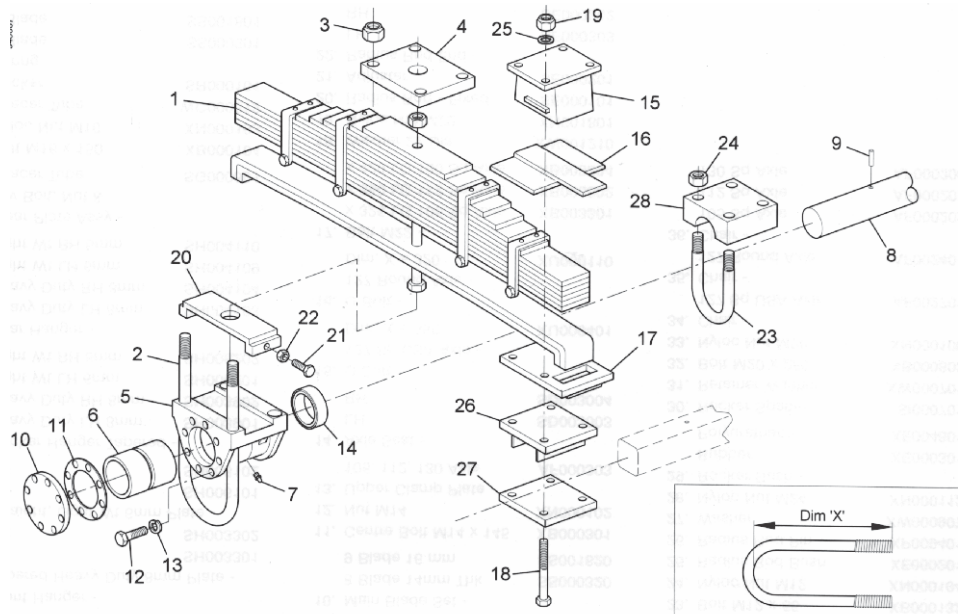
- | | |
|----------------------|---------|
| 25. Torque Arm Bush | 02BH004 |
| 26. T/ Arm Pin | 02TP001 |
| 29. Rocker Bush | 02BH003 |
| 30. Rocker Pin Comp. | 02RP002 |



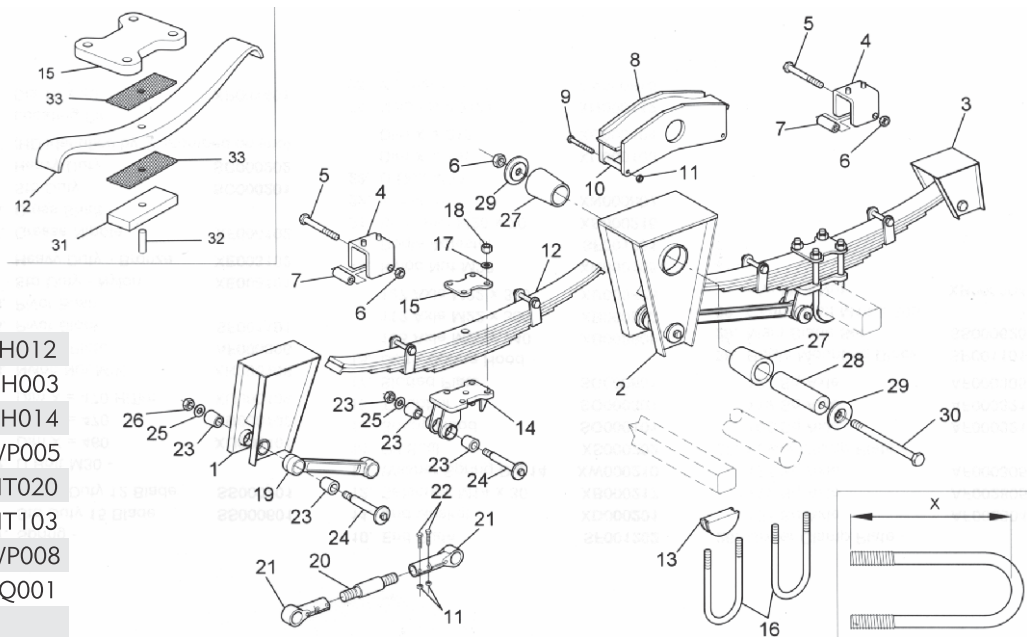
MAX H2 Tandem Bogie Suspension

- | | |
|--------------------|----------|
| 1. Spring - | |
| Std 15 Bl. | 02SP102 |
| HD 12 Bl. | 02SP108 |
| 2. U-Bolt M30 | 02UB004 |
| 3. M30 Nyloc Nut | 16HT100 |
| 4. Clamp Plate | 02CP007 |
| 5. Pivot Block | 02PB001 |
| 6. Pivot Bush | 02BB001 |
| 7. Grease Nipple | 02GN001 |
| 8. Cross Shaft | 02CS001 |
| 9. Locating Pin | 02CS001L |
| 10. End Plate | 02EP001 |
| 11. End Gasket | 02GS007 |
| 12. Set Screw | 16HT066 |
| 13. Washer | 16HT213 |
| 14. Oil Seal | 01OS002 |
| 15. Spring Hood | 02SH002 |
| 16. T - Rubber | 02TR001 |
| 17. Slotted Plate | 02SP002 |
| Bolt & Nut | 16HT002 |
| Nut | 16HT102 |
| 20. Bogie Adjuster | 02BA001 |

- | | |
|--------------------------|---------|
| 21. 20x70 Bogie Adj Bolt | 16HT046 |
| 23. Cross Shaft U-Bolt | 02UB006 |
| 26. Upper Clamp Plate | 02CP007 |
| 27. Lower Cl. Plate | |
| 28. Mounting Block | 02MB001 |

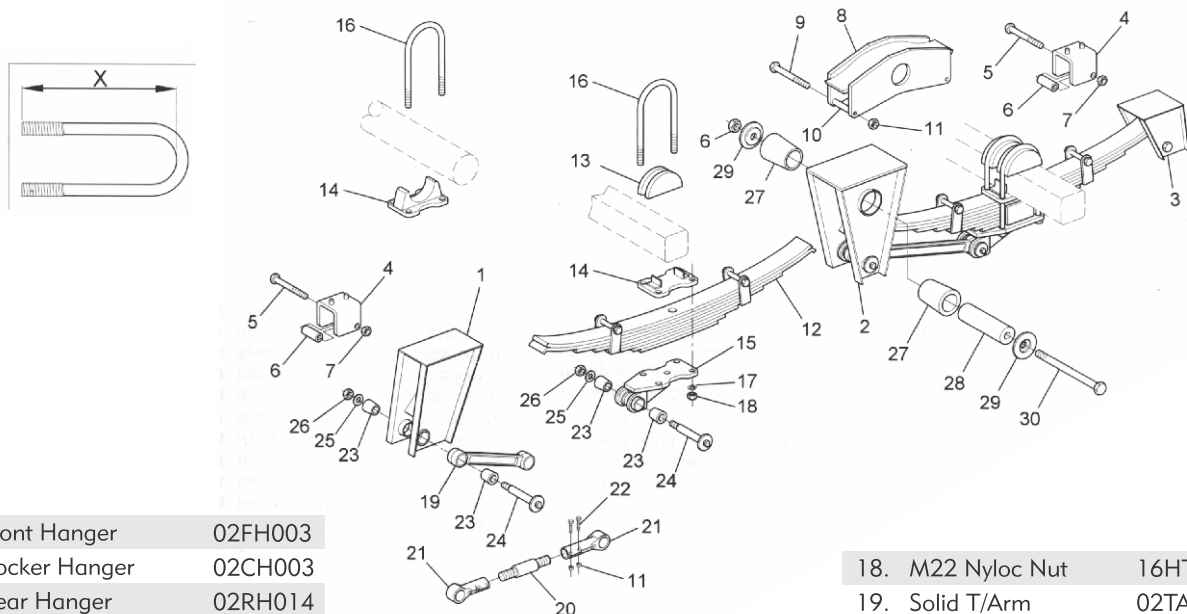


SW "SWPT" overslung suspension



1. Front Hanger	02FH012	17. Washer 22 dia.		27. Rocker Bush	02BH003
2. Rocker Hanger	02CH003	18. M22 Nyloc Nut	16HT102	28. Rocker Spacer Tube	02RP003
3. Rear Hanger	02RH014	19. Solid Torque arm	02TA010	29. Retainer Washer	02RP004
4. Slipper Liner	02WP005	20. Adj. Torque arm	02TA006	30. M20x250 Bolt	16HT006
5. Bolt M20 x 140	16HT020	21. Torque Arm Pin compl.	02TP001	31. Spring pack	
6. Nyloc Nut M20	16HT103	22. Torque Arm Bush	02BH004	32. Dowel	
7. Spacer Tube	02WP008	23. Torque Arm Pin compl.	02TP001	33. Delrin Liner	
8. Rocker	02EQ001				
9. Bolt M12x120					
10. Spacer Tube					
11. M12 Nyloc Nut					
12. Springpack 8/9	02SP100/1				
13. Strongback 127 dia	02SB103				
105 sq axle					
14. Spring Chair	02AS029				
15. Top Plate 127 dia ax	02CP004				
105 sq axle	02CP001				
16. U-Bolt	02UB001				

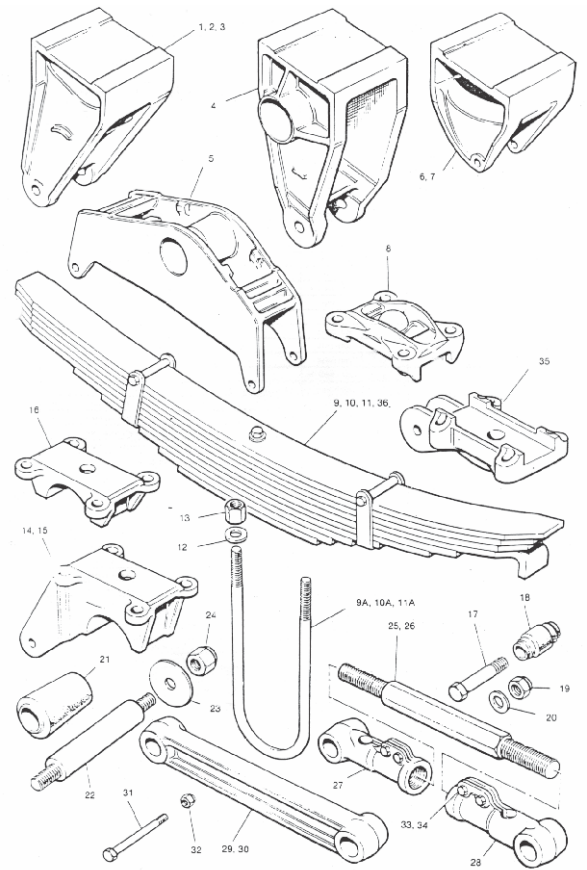
SW 'SWPT' Underslung Suspension



1. Front Hanger	02FH003	18. M22 Nyloc Nut	16HT102	31. Delrin Liner (not shown)	
2. Rocker Hanger	02CH003	19. Solid T/Arm	02TA010		
3. Rear Hanger	02RH014	20. Adj. T/Arm	02TA006		
4. Slipper Liner	02WP005	21. T/Arm Bush	02BH004		
5. Bolt M20x140	16HT020	22. T/Arm Pin	02TP001		
6. M20 Nyloc Nut	16HT103	23. Washer 25 dia.			
7. Spacer Tube	02WP008	24. Nyloc Nut			
8. Rocker		25. Rocker Bush	02BH003		
9. Bolt M12x120		26. Rocker Pin Compl.	02RP002B		
10. Spacer Tube					
11. M12 Nyloc Nut					
		12. Spring pack 8/9 Bl	02SP100/1		
		13. Strongback 127 rnd	02SB103		
		105 sq			
		14. Axle seat	02AS030		
		15. Spring Chair	02AS029		
		16. U-Bolt	02UB005		
		17. Washer 22 dia.			

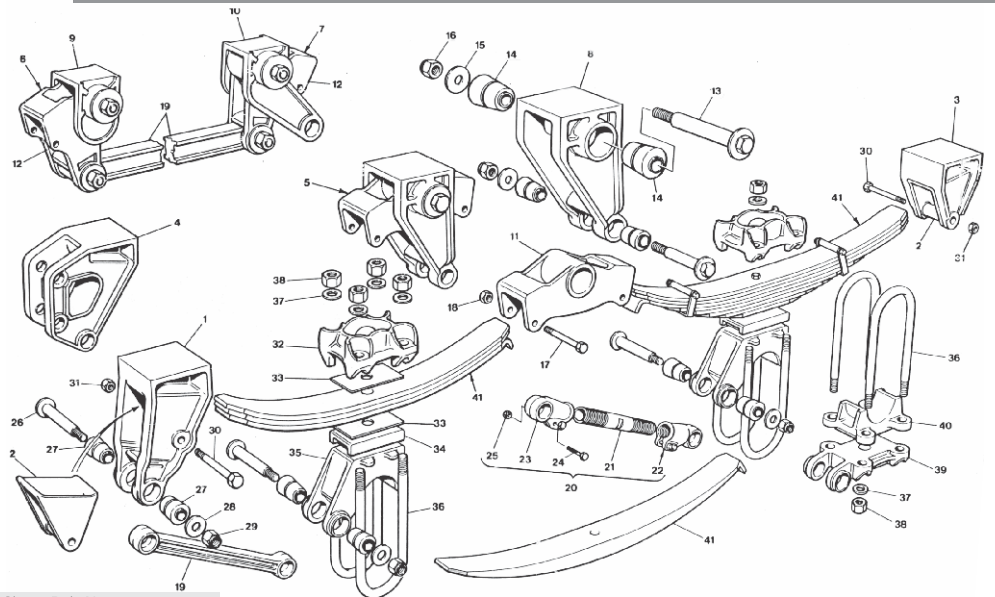
PRO 'T' Series Suspension

- | | |
|---------------------------|--|
| 1. Front Hanger | 22. Equaliser Shaft |
| 2. Front Hanger Bracket | 23. Equaliser Shaft Washer |
| 3. Front Hanger - towing | 24. Equaliser Shaft Nut |
| 4. Equaliser Bracket Std | 25. Adj. T/Arm Screw |
| 5. Equaliser | 26. Adj. T/Arm Screw rr long |
| 6. Rear Hanger Bracket | 27. Adj. T/Arm end RH |
| 7. Rear Hanger Bracket HT | 28. Adj. T/Arm end LH |
| 8. Top Plate | 29. Solid T/Arm short |
| 9. Spring 8 Blade | 30. Solid T/Arm long |
| 9a Spring U-Bolt | 31. Rocker & Rear hanger bracket |
| 10. Spring 9 Blade | 32. Rocker and Rear hanger bracket nut |
| 10a Spring U-Bolt | 33. Adj T/Arm end bolt |
| 11. Spring 10 Blade | 34. nut |
| 11a Spring U-Bolt | 35. T/Arm mounting bracket U/S |
| 12 U-Bolt Washer | |
| 13. U-Bolt Nut | |
| 14. Spring seat std | |
| 15. Spring Seat - Low | |
| 16. Spring Seat u/slung | |
| 17. Torque arm bolt | |
| 18. Torque arm bush | |
| 19. Torque Arm bolt nut | |
| 20. T/Arm Bolt washer | |
| 21. Equaliser Bush | |



PRO SMT Suspension

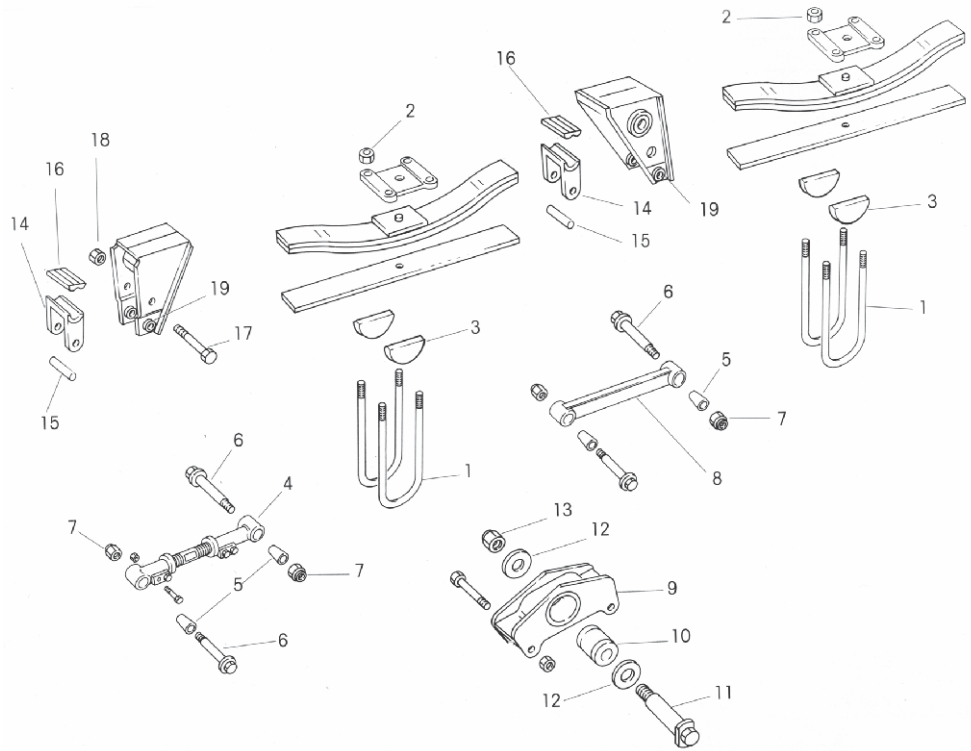
- | | | | |
|--------------------------------------|------------------------------|---|---|
| 1. Front Hanger Bracket | 25. Clamp Bolt Nut | 35. Spring Seat (26mm) | 41A Spring Assy - 3 Leaf |
| 2. Wear Insert | 26. Torque Arm Bolt | 35. Spring Seat (51mm) | 41B Spring Assy - 3 Leaf - Tridem Centre |
| 3. Rear Hanger Bracket | 27. Torque Arm Bush | 36. U Bolt - Standard | 41C Spring Assy - 8 Leaf |
| 4. Front Drawbar Bracket | 28. Torque Arm Bolt Washer | 36. U Bolt - Underslung | 41D Spring Assy - 8 Leaf - Tridem Centre |
| 5. Equaliser Assy - Close Coupled | 29. Torque Arm Bolt Locknut | 37. U Bolt Washer | 41 Spring Single Taper Leaf |
| 7. Rear Equaliser Assy - W/Spread | 30. Wear Insert Bolt | 38. U Bolt Nut | 41 Spring Single Taper Leaf - Tridem Centre |
| 8. Equaliser Bracket - Close Coupled | 31. Wear Insert Bolt Locknut | 39. Torque Arm Mounting Brkt - Underslung | |
| 9. Fwd Equaliser Brkt - W/Spread | 32. Top Plate | 40. Spring Seat - Underslung | |
| 10. Rear Equaliser Brkt - W/Spread | 33. Delrin Liner | | |
| 11. Equaliser - Close Coupled | 34. Spacer Block (25mm) | | |
| 12. Equaliser - Wide Spread | 34. Spacer Block (70mm) | | |
| 13. Equaliser Bolt | 34. Spacer Block (45mm) | | |
| 14. Equaliser Bush | | | |
| 15. Equaliser Bush Clamp Washer | | | |
| 16. Equaliser Bolt Locknut | | | |
| 17. Equaliser Rebound Bolt | | | |
| 18. Equaliser Rebound Bolt Nut | | | |
| 19A Rigid Torque Arm (464) | | | |
| 19B Rigid T/ Arm - Wide Spread (699) | | | |
| 19C Rigid T/ Arm - Wide Spread (381) | | | |
| 19D Rigid T/ Arm - Underslung (438) | | | |
| 20A Adj. T/ Arm Assy (498-441) | | | |
| 20B Adj. Torque Arm Assy - W/Spread | | | |
| 20C Adj.T/Arm Assy - Underslung | | | |
| 21A Adj.Torque Arm Screw | | | |
| 21B Adj.Torque Arm Screw | | | |
| 21C Adj.Torque Arm Screw | | | |
| 22A Adj.Torque Arm Assy - LH | | | |
| 22B Adj.Torque Arm Assy - RH | | | |
| 23A Adj.Torque Arm End - LH | | | |
| 23B Adj.Torque Arm End - RH | | | |
| 24. Clamp Bolt | | | |



BPW Mechanical Suspension

We supply original BPW Spares on condition that we are supplied with the correct BPW Part Numbers

1. U-Bolt
2. U-Bolt Nut
3. Segment
4. Adj. Torque Arm
5. Torque Arm Bush
6. Bolt (T/Arm)
150x30
170x30
190x30
7. T/Arm Lock Nut
8. Solid T/Arm
9. Rocker
10. Rocker Bush
11. Rocker Bolt
12. Washer
13. Lock Nut
14. Bracket
15. Tube
16. Slide
17. Bolt
18. Lock Nut
19. Bush

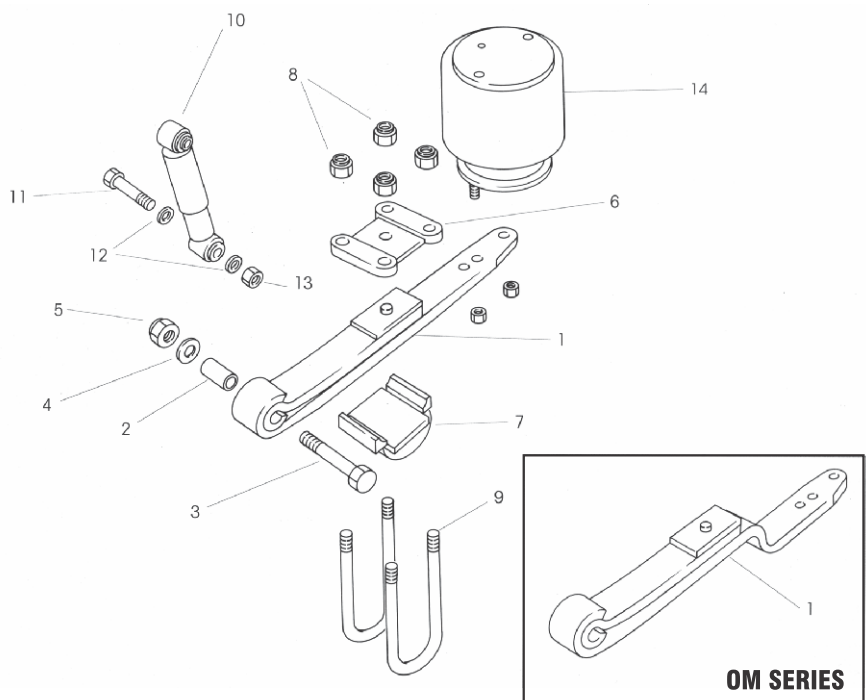


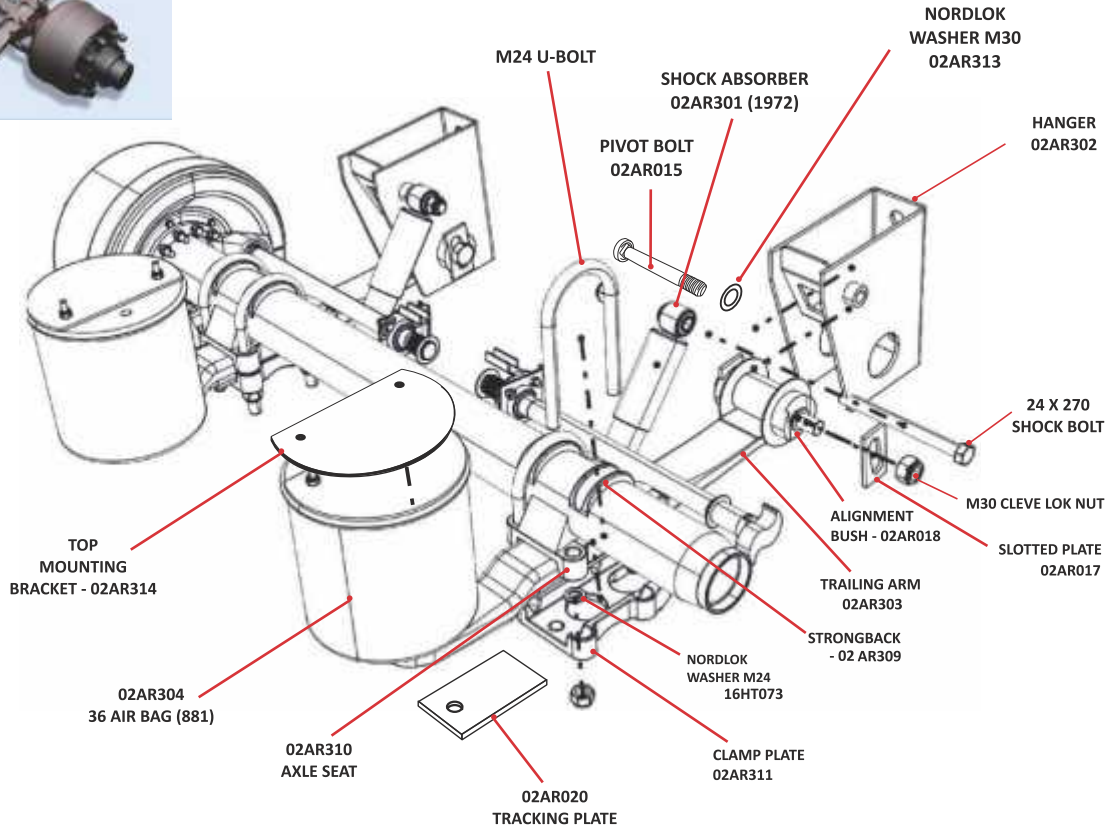
BPW Air Suspension - O, OM, OT Series

We supply original BPW Spares on condition that we are supplied with the correct BPW Part Numbers

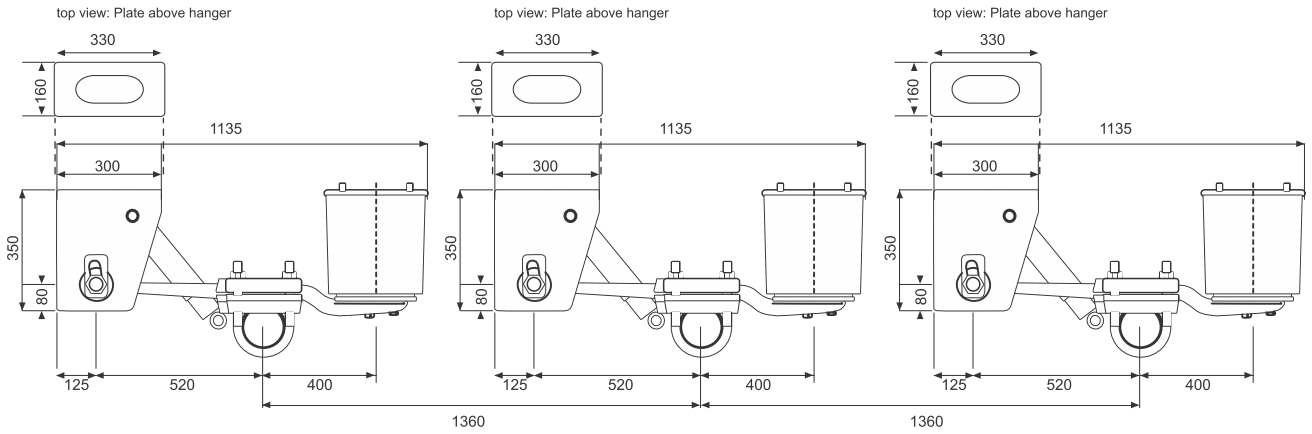
O-Series

1. Leaf Spring
2. Bush
3. Bolt
4. Washers
5. Lock Nut
6. Spring Plate
7. Segment
8. Lock Nut
9. U-Bolt
10. Shock Absorber
11. Mounting Bolt
12. Washer
13. Lock Nut
14. Air Spring

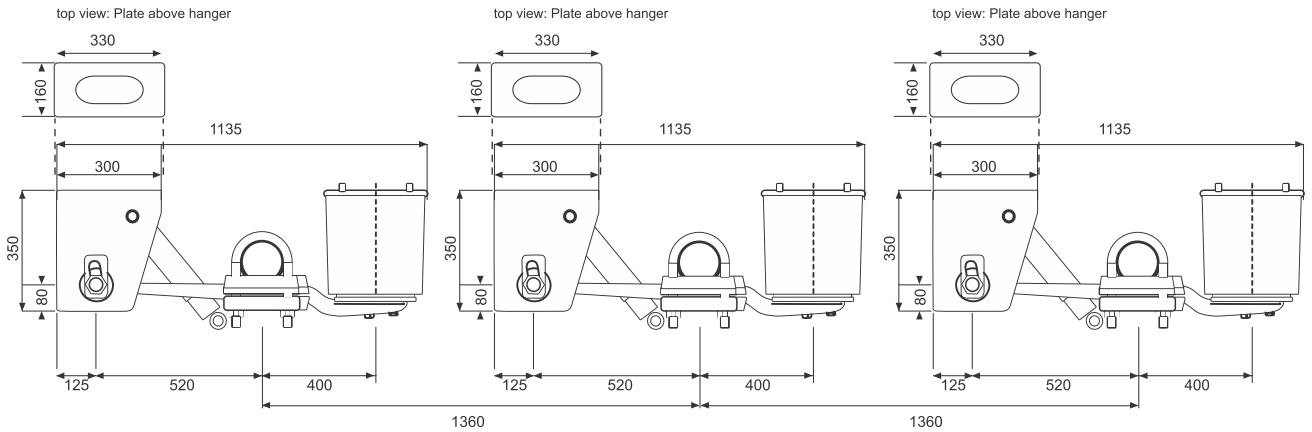


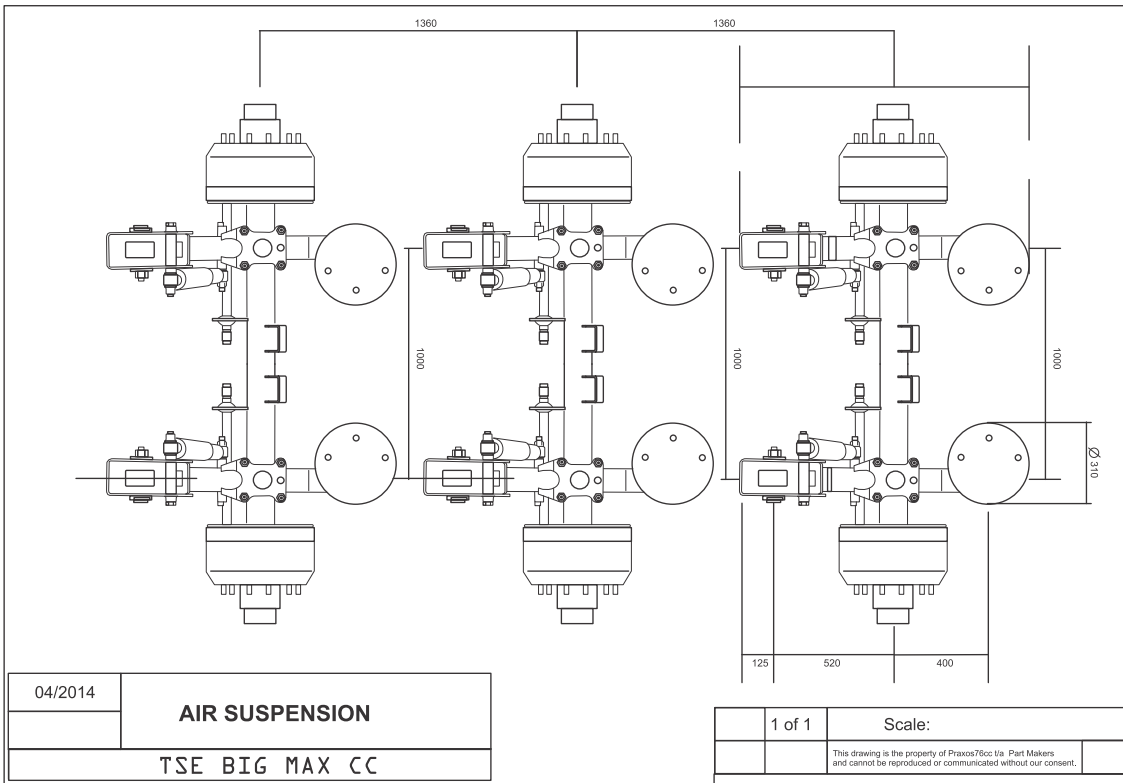


OVERSLUNG



UNDERSLUNG





MAX Heavy Duty Suspension

THE BEST HEAVY DUTY SUSPENSION THERE IS!

Tried... Tested and Proven.

BIG MAX brings you an extra heavy duty suspension for the harshest conditions out there, be it forestry, off-road, mining etc. Available in overslung and underslung - Supplied with extreme service bushes & 8mm plate. Guaranteed to give your rig the smoothest and most reliable drive.

GET UP TO 10 YEARS OF EXTREME USAGE!!

BUILT TO BE ABUSED

8mm PLATE

TSE BIG MAX - YOUR TRUCKING PARTNER

THE SUSPENSION FROM THE FUTURE

MAX TITAN O.U.

Mechanical Suspension



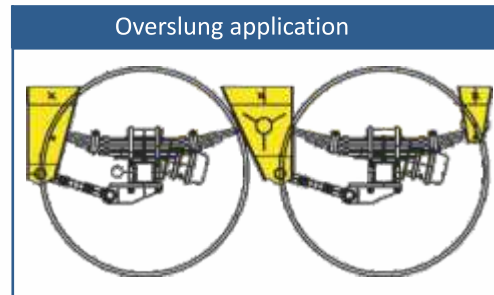
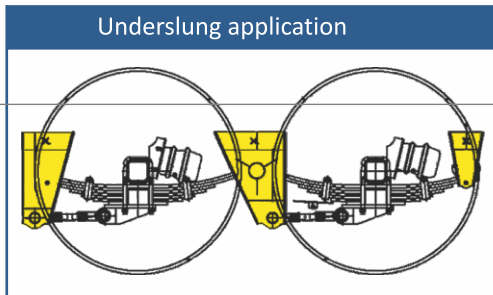
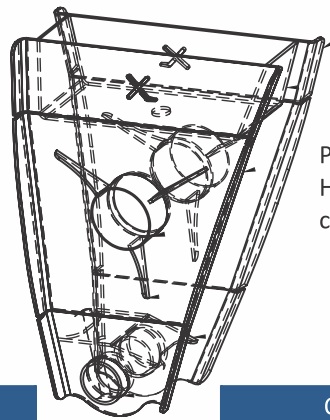
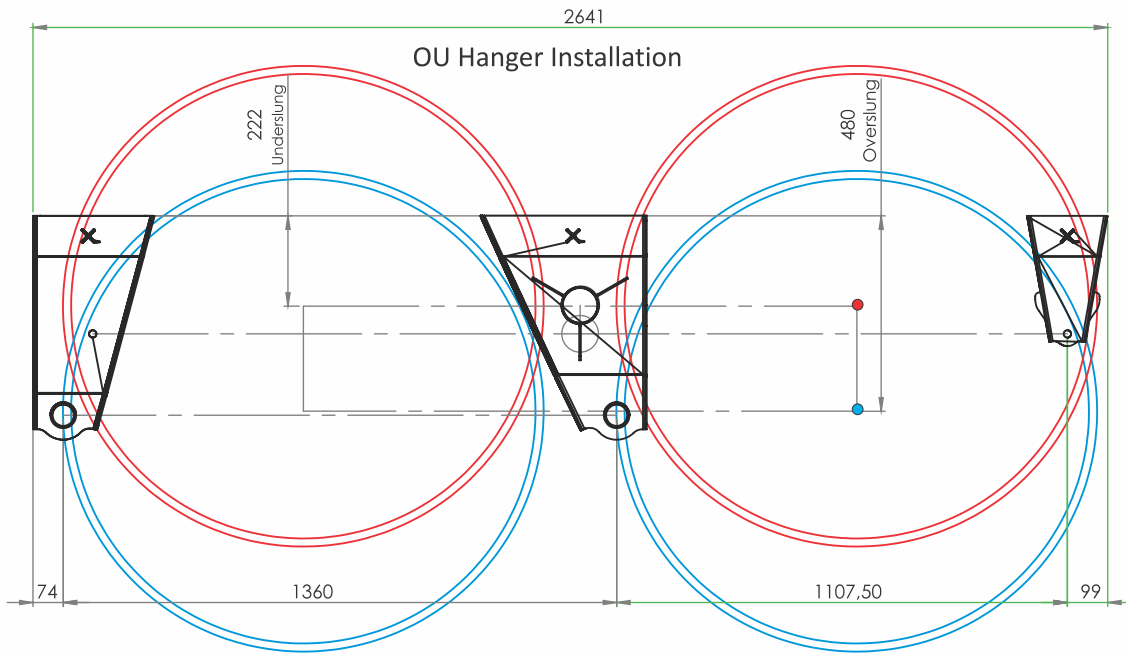
Amongst all the bad news that's been surrounding the transport industry of late, finally comes some good and exciting news...

A change that the industry has been waiting for, the MAX TITAN O.U. Suspension. Design Patent No: F2015/01583A - F2015/01584A - F2015/01586. O.U. stands for Over-slung and Underslung. Yes, you read correctly! One type of hanger which can be used both, in over-slung & underslung trailer applications.

THE BENEFITS OF THE MAX TITAN O.U. MECHANICAL SUSPENSION

- Increased strength of up to 20% compared to normal mechanical suspensions.
- Decrease in weight - Up to 15% lighter in weight than a normal mechanical suspension.
- A trailer manufacturers delight! No more confusion between over & underslung hangers. One type of hanger for both front link & rear link.
- A further advantage for trailer builders is that on a tri-axle and rear link, the chassis height is reduced by 70mm which has a tremendous knock-on effect of benefits;
- The weight of the trailer is reduced, saving you R 30/kg which adds up to approximately half a ton. With an average annual mileage of 850 000km per rig, multiply that by R30???
- Less manufacturing costs due to less material used.
- For the end-user, extra payload per trip of up to half a ton. Everyone wins!
- Stock holding becomes a breeze when you stock just one type of hanger as opposed to always having to make sure you have F Hangers and J Hangers in stock.

A first of its kind, exclusively designed & manufactured in South Africa by TSE Big Max. A POWERFUL, yet lightweight mechanical suspension made from imported high tensile alloy will without a doubt have a great influence within the industry especially when it comes to huge savings, to both the trailer manufacturer as well as the end user.



TSE **BIG** MAX^{CC}



Proven 100,000 times over this 9 ton air suspension system is known for high reliability and maintenance simplicity equipped with 420 x 180 mm drum brakes. **Capacity: 9 t**

trailer suspension and components

ADVANCE



Leading the way

Maintenance Free for Life

Our design incorporates the functional suspension arms & axle beam into one unitized & maintenance free component. This indestructible design provides additional benefits such as: no extra mounting parts, such as axle seats & U-bolts, no re-torquing of screws and nuts.

latest
TECHNOLOGY



For Your Peace of Mind

Our **GUARANTEE OF COMPETENCE** takes the worry out of equipment concerns: protection up to 1 million km and 6 years on the complete suspension system according to TSE BIG MAX guarantee conditions



Torque Arm Bushes



CLEAR - POLYURETHANE

Rocker Bushes



CLEAR - POLYURETHANE

spring packs & trailing arms



- 7 blade spring pack - 76 x 16
- 8 blade spring pack - standard
- 8 bl. 8.5 ton h/duty - 3 x 16 / 5 x 20
- go suspension - 8 blade
- ror centre - 8 blade
- ror off centre - 8 blade
- 9 blade spring pack - standard
- 9 bl. exp. s/pack - 3 x 16 / 6 x 14
- 12 blade spring pack
- 12 blade bpw repl. - 100 x 12
- 15 blade spring pack



AIR BRAKE SYSTEM & PARTS

TSE BIG MAX carry a full range of air brake equipment to satisfy all our customers needs. From air brake valves to clutch servos, fittings and nylon tubing, air tanks and brackets. We have a team of air brake experts who are always at your service for technical advise. TSE Big Max supplies air brake kits complete with all the fittings, boosters and modules to suit all trailers. Repairs and reconditioning of heavy duty calipers are done on site for your convenience.





Air Dryer Cartridge

TSE BM No: 5AD3511KA

C/R: RL3511KA

C/R: 432 410 020 2



Air Dryer Cartridge AD9

TSE BM No: 5AD3513DA

C/R: RL3513DA

C/R: 107796



Air Dryer w. Unloader

TSE BM No: 5AD3511AA

C/R: RL3511AM

C/R: 432 410 202 0



Air Horn - Twin w. Solenoid

TSE BM No: 10HT001



Air Line Filter

TSE BM No: 5LS001

C/R: RL3515ZA

C/R: 432 500 020 0



Air Tanks

TSE BM No: 05AT001/7

20L / 30L / 40L/60L...

20L 8"



Clutch Servo (MAN)F8

TSE BM No: 5CS1608CA

C/R: RL1608CA

C/R: Vg3200



Clutch Servo (Merc)

TSE BM No: 05CS003

C/R: RL1608KA

C/R: 970 051 131 0



Clutch Servo (Nissan/Toyota)

TSE BM No: 05CS012

C/R: RL1608PC

C/R: 970 051 126 0



Clutch Servo (JAP) 70mm

TSE BM No: 05CS001

C/R: RL1608AM

C/R: 642 016 08



TSE BM No: 05CS002

C/R: RL1608BM

C/R: 642 035 02



TSE BM No: 05CS010

C/R: RL1608XB

C/R: 655 435AM



TSE BM No: 05CS004

C/R: RL1608LA

C/R: Vg3361



TSE BM No: 05CS006

C/R: RL1608PE

C/R: 970 051 124 0



TSE BM No:5

C/R: RL3506AC



M22 (F) x M22 (M)

TSE BM No: 5CV001

C/R: RL3525DB



TSE BM No: 5CV3525ZA

C/R: RL3525ZA

C/R: KW2366/2



TSE BM No: 5CV3525AA

C/R: RL3525AA

C/R: 434 014 000 0



TSE BM No: 5CV3531AD

C/R: RL3531BA/AD

C/R: 434 100 000 0



TSE BM No: 5CV3533LA

C/R: RL3533LA

C/R: 434 208 029 0



Diaphragms

TSE BM No: 05DI002/6
T16, T20, T24, T30



Diff Lock Switch

TSE BM No: 05DL001
C/R: RL1705CA
C/R: AE1111/4



D2 Governor Valve

TSE BM No: 5DT3512GL
C/R: RL3512GA
C/R: 275508



Drain V. Man. 22mm

TSE BM No: 5DV3513BB
C/R: RL3513BB
C/R: 934 300 033 0



TSE BM No: 5EB3548AA

C/R: RL3548AF
C/R: 463 013 112 0



TSE BM No: 5EB3548AB

C/R: RL3548AG
C/R: 463 013 114 0



Flick Switch

TSE BM No: 5FS3526HA

C/R: RL3526HA
C/R: 277516



F&J Male Coupl. Dust Cover

TSE BM No: 05AC103



Fuel Shut-off Cyl 8mm

TSE BM No: 5VLO40

C/R: Sz1159
C/R: 471 005 020 0



F&J 1/2" Male Coupling

TSE BM No: 05AC001

C/R: 052 000 001 4



F&J 1/2" Female Coupl.

TSE BM No: 05AC002

C/R: 052 001 002 2



F&J Shut-off Valve Short Stem

TSE BM No: 05AC003

C/R: 052 001 003 2



F&J Shut-off Valve Long Stem

TSE BM No: 05AC004

C/R: 052 003 001 2



F&J Mounting Bracket

TSE BM No: 05AC005

C/R: 052 003 015 2



F&J Copper Washer

TSE BM No: 05AC006



F&J Dust Flap

TSE BM No: 05AC104

C/R: 052 003 014 2



F&J Striker Op. Plug

TSE BM No: 05PL001

C/R: Ap11168



4 Circuit Prot. Valv 5 Prt

TSE BM No: 5FP3515EA

C/R: RL3515EA
C/R: 934 702 300 0



4 Circuit Prot. Valv 5 Prt

TSE BM No: 5FP3515LF

C/R: RL3515LF
C/R: Ae4158



4 Circuit Prot. Valv 7 Prt

TSE BM No: 5FP3515DA

C/R: RL3515DA
C/R: 934 702 210 0



4 Circuit Prot. Valv 7 Prt
TSE BM No: 5FP005
C/R: RL3515CA
C/R: Ae4162



Foot Valve Square Type
TSE BM No: 5FV3514DS
C/R: RL3514DS
C/R: 461 315 008 0



Foot Valve with Signal Port
TSE BM No: 5FV3514DD
C/R: RL3514DD
C/R: 461 319 008 0



Foot Valve E3 w/o Pedal
TSE BM No: 5FV3514GD
C/R: RL3514GD
C/R: 286171



Foot Valve with Pedal
TSE BM No: 05FV009
C/R: RL3514MA
C/R: 461 307 200 0



Foot Valve E2 w/o Pedal
TSE BM No: 5FV3514PA
C/R: RL3514PA
C/R: 229501



Foot Valve Dual
TSE BM No: 05FV013
C/R: RL3514MB
C/R: 461 307 479 0



TSE BM No: 05GB001
C/R: RL1705AB
C/R: F96387



TSE BM No: 05GB002
C/R: RL1705BA
C/R: 571 003 104 0



TSE BM No: 05GB005
C/R: A4740



TSE BM No: 05VL028
C/R: RL1705ZA
C/R: SV3368



TSE BM No: 05GS001
C/R: A3546



TSE BM No: 5GV3531EA
C/R: RL3531EA
C/R: Mc802149



Hand Control
TSE BM No: 5HC3526CK
C/R: RL3526CK
C/R: 961 722 252 0



H/Control 3 Prt Rot. Lever
TSE BM No: 5HC3526PA
C/R: RL3526PA
C/R: HB 1136



H/Control 2 Prt Bottom
TSE BM No: 5HC3526BB
C/R: RL3526BB
C/R: 961 723 405 0



Hand Control 3 Port
TSE BM No: 5HC3526EK
C/R: RL3526EK
C/R: HB 1179



H/Control 3 Prt Side M16
TSE BM No: 05HV007
C/R: RL3526NB
C/R: 961 723 104 0



H/Control 4 Prt Rot. Lev
TSE BM No: 5HC3526PB
C/R: RL3526PB
C/R: 961 702 014 0



Hose Clamps 1/2"
TSE BM No: 05HC001
C/R: A5370



TSE BM No: 05LP001
C/R: 295473



TSE BM No: 05LK001
C/R: RL



TSE BM No: 05LK002
C/R: RL



TSE BM No: 5LS3523AF
C/R: RL3523AF
C/R: 475 710 036 0



TSE BM No: 5LV2908BA
C/R: RL2908AA
C/R: 464 006 002 0



Nylon Tubing
TSE BM No: 05NT001/5
All Colours
4mm to 12mm



TSE BM No: 050C001
C/R: RL3535GA
C/R: 422 010 012 0



TSE BM No: 050C002
C/R: RL3535FA
C/R: 422 010 010 0



Palm Coupling - Red
TSE BM No: 05PC001



Palm Coupling - Yellow
TSE BM No: 05PC002



Plastic Quick Couplers
TSE BM No: 05QC001/12
Full Range of Couplers, Tee's, & Line connectors & SIZES



TSE BM No: 5
C/R: RL3516JA



TSE BM No: 5QR3516ED
C/R: RL3516ED
C/R: 973 500 000 0



TSE BM No: 5RV3518AH
C/R: RL3518AH
C/R: 973 001 010 0



Relay Valve Sq. M16
TSE BM No: 5RV3518AK
C/R: RL3518AK
C/R: 973 001 020 0



Relay Valve 10S4
TSE BM No: 05VL027
C/R: RL3518NB
C/R: 471 005 020 0



RG Relay Valve
TSE BM No: 05RV001
C/R: RL3518EA
C/R: 280 375



REG Relay Valve
TSE BM No: 5RV3527AB
C/R: RL3527AB
C/R: 281 672



1/2" Rubber Hose
TSE BM No: 05RH001



1/2" Rubber Hose
TSE BM No: 05SH003 RED
TSE BM No: 05SH004 YEL



TSE BM No: 5S03520AA
C/R: RL3520AA
C/R: 452 002 107 0



TSE BM No: 5CV003
C/R: RL3525AA
C/R: 434 014 000 0



TSE BM No: 5SL001
C/R: RL
C/R: 262625



TSE BM No: 5 SB3519AA
C/R: RL3519AA1



TSE BM No: 5SB3530RA
C/R: RL3530RA
C/R: 925 454 001 0



TSE BM No: 05SB006
C/R: RL3530BA
C/R: 300 100 55-2



TSE BM No: 5SB3530EA
C/R: RL3530EA20
C/R: 24/30



TSE BM No: 05SB011
C/R: RL3530MA
C/R: 4-STUD



Trailer Control wo. Dump
TSE BM No: 5TC3522AA
C/R: RL3522AH
C/R: 973 002 402 0



T/Control w. Dmp. M22
TSE BM No: 05TC002
C/R: RL3522FB-A
C/R: 973 009 001 0



T/Control w. Dmp. M16
TSE BM No: 05TC006
C/R: RL3522FC
C/R: 973 009 SERIES



Test Point
TSE BM No: 05TB001
C/R: RL3506AC



Trailer Control w. Dump
TSE BM No: 05TC001
C/R: RL3522BH
C/R: 973 002 521 0



TSE BM No: 5UL3512AB
C/R: RL3512AB
C/R: 975 300 1100



TSE BM No: 5UL3512CA
C/R: RL3512BG
C/R: 975 303 473 0

DID YOU KNOW?...
Due to popular demand from you, our valued customer & to assert ourselves as everyone's 1-STOP trucking partner, TSE Big Max proudly now offers its service and expertise to you for the following:

REPAIRS AND RE-CONDITIONING OF HEAVY-DUTY CALIPERS

- KNORR BREMSE • WABCO • MERITOR • HALDEX

Major repairs and reconditioning done on all brands of heavy duty calipers
Each unit is restored to its original state and installed with complete brand new European parts.

Complete overhauls done from R 2800.00 excl VAT



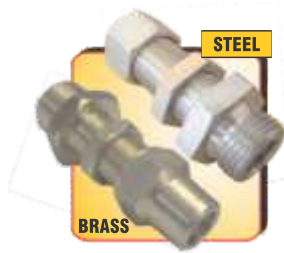
Complete ABS & Non-ABS trailer kits, includes fittings, boosters & everything needed to complete a trailer





BANJO BOLTS

M16 x 8	
M14 x 12	
M16 x 6	



BULKHEAD

Metric	
12 x 1/2 BSP	
M22 x 12 BSP	
M22 x M22	



CABLE TIES

Length	
140mm	T18R
200mm	C.T.4150
395mm	C.T.5390



HEX NIPPLES

Metric	Imperial
M22 x M22	1/4 x 1/4
M22 x 1/2	1/2 x 1/2



FERRULES

Metric	
06L	1/4
08L	3/8
10L	1/2
12L	
15L	
16L	



INSERTS

Metric	Imperial
06L	1/4
08L	3/8
10L	1/2
12L	
15L	
16L	



ELBOWS

Metric	Imperial
M16 x 12	1/4 x 12
M22 x 8	3/8 x 12
M22 x 10	1/2 x 12
M22 x 12	1/2 x 15
M22 x 15	



MANUAL DRAIN VALVE

22mm	1/4" NPT
MANUAL TILT	
TYPE	



HOSE ADAPTORS

Metric	Imperial
16 x 1/2	1/4 x 1/2
22 x 1/2	1/2 x 1/2
	3/8 x 1/2



HOSE TEES

Metric	Imperial
	1/2" STEEL
	1/2" PLASTIC
	1/4" PLASTIC



LINE CONNECTOR - STEEL



LINE CONNECTORS

Metric	Imperial
6 x 6 STEEL	1/4 x 1/4
8 x 8 STEEL	3/8 x 3/8
10 x 10 STEEL	1/2 x 1/2
12 x 12 STEEL	
15 x 15 STEEL	
18 x 18 STEEL	



REDUCING BUSH



REDUCING BUSH

REDUCERS

M16 x M22	Imperial
M16 x 1/2	1/4 x 1/8 NPT-M
M16 x 1/4	3/4 x 1/2 NPT-F
M22 x 3/8	1/2 x 3/8 NPT-F
M22 x M16 FM	3/8 x 1/4 NPT-F
M22 x 1/4 NPT	1/2 x 1/4 NPT-F
M22 x 1/2 NPT	1/2 x M22 NPT-F



TEST POINT

Metric
M14
M16
M18



QUICK CONNECTORS

6 mm	
8 mm	
10 mm	
12 mm	



QUICK CONNECTORS - TEES

6 mm	
8 mm	
10 mm	
12 mm	



SOCKET - BRASS

SOCKETS

Metric	Imperial
M12 x M12	1/2 x 1/2
M22 x M22 <small>SHORT</small>	1/4 x 1/4
M22 x M22 <small>LONG</small>	



PIPE CLAMPS

Metric	Imperial
6 mm	1/2"
8 mm	
10 mm	
12 mm	
15 mm	



PLUGS - BRASS

PLUGS

Metric	Imperial
M10	1/8 NPT
M12	1/4 NPT
M14	3/8 NPT
M16	1/2 NPT
M18	
M22	
M26	



TEST BLOCK

TEST BLOCK
3/8M x 1/4F
3/8 Hose



BRASS TEE



STEEL TEE

TEES	
Metric	Imperial
6 x 6 x 6	1/4 x 1/4 x 1/4
8 x 8 x 8	3/8Mx3/8Fx3/8F
10x10x10	3/8 TEE
12x12x12	1/2" INCH HOSE TEE - STEEL
15x15x15	
16x16	12 x 3/8 x 12
18x18	



TEE SWIVEL

TEE SWIVEL	
6 x 6sw x 6	
8 x 8sw x 8	
10sw x 10 x 10	
12sw x 12 x 12	
12sw x TEST x 12	



UNION - STEEL



UNION - BRASS



UNION - BRASS

UNIONS	
Metric	Imperial
M10 x 8	1/8 x 12
M12 x 8	1/4 x 12
M14 x 12	3/8 x 12
M16 x 12	1/2 x 12
M22 x 12	
M22 x 15	
M26 x 12	



ALUMINIUM WASHER

ALUMINIUM WASHERS

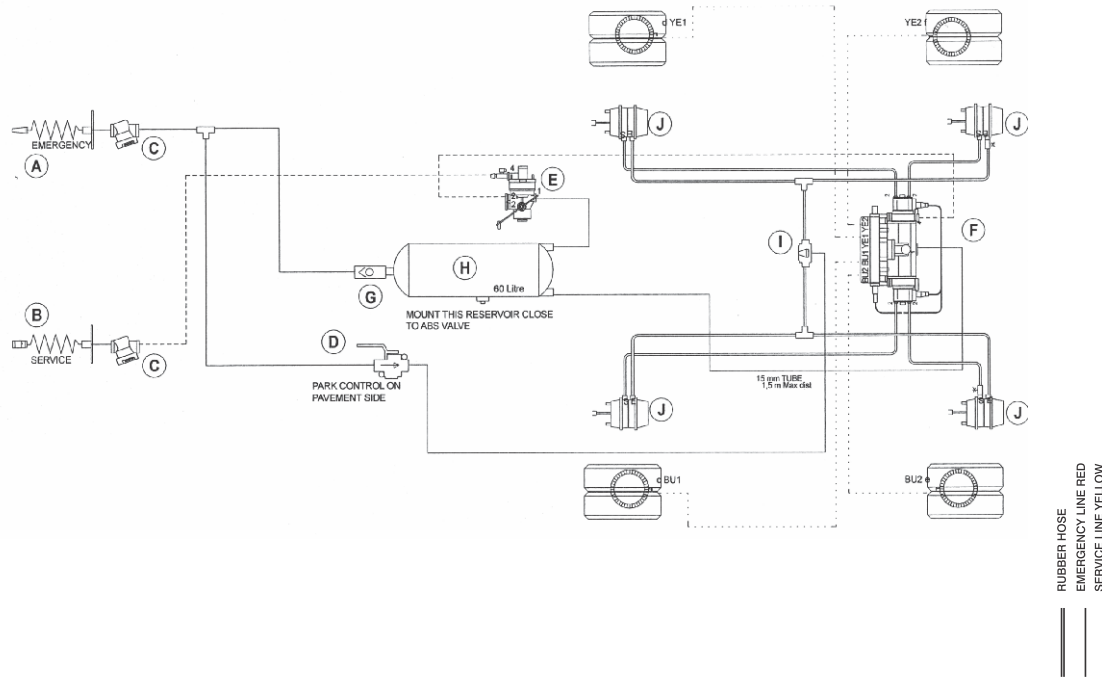
Metric	Imperial
M6	1/2"
M10	
M12	
M16	
M22	
M26	



COPPER WASHER

COPPER WASHERS	
1/2"	
22mm	
ALUMINIUM WASHERS	
1/2"	
14mm	
16mm	
22mm	

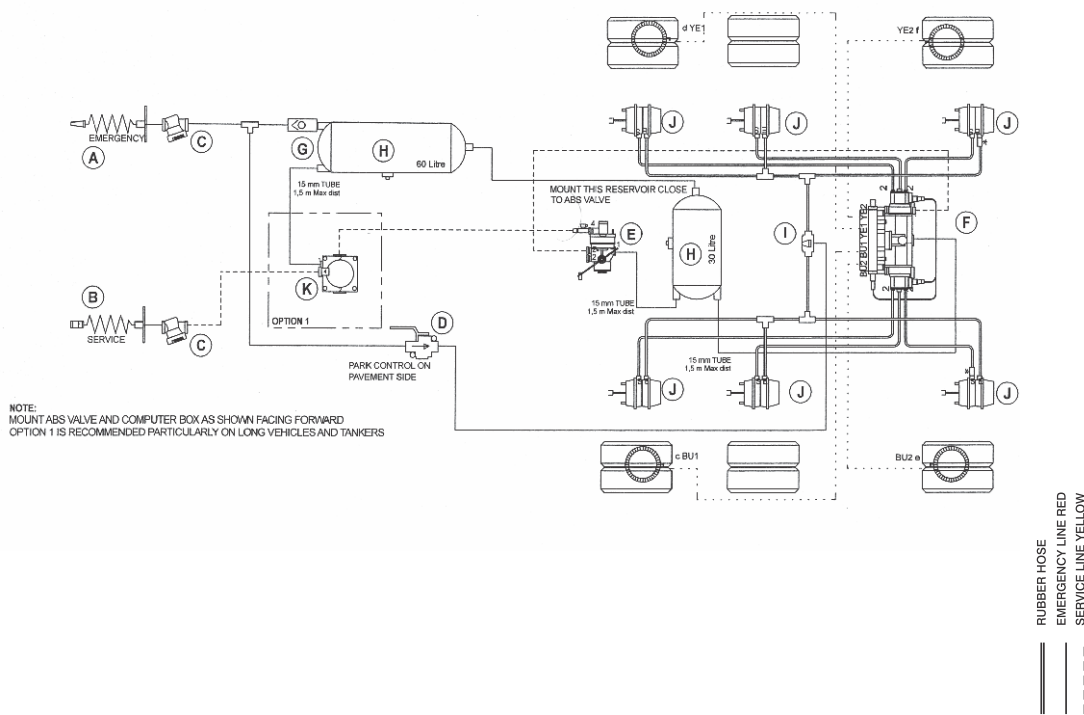
TANDEM axle semi trailer



TANDEM AXLE SEMI TRAILER BRAKE SYSTEM S.A.B.S. 1506 SPECIFICATION
 RELAY LOAD SENSING VALVE FOR MECHANICAL SUSPENSION
 4 X SPRING BRAKES

TITLE
 TANDEM AXLE
 SEMI TRAILER 4S/2M ABS
 MECH SUSPENSION

TRIDEM axle semi trailer

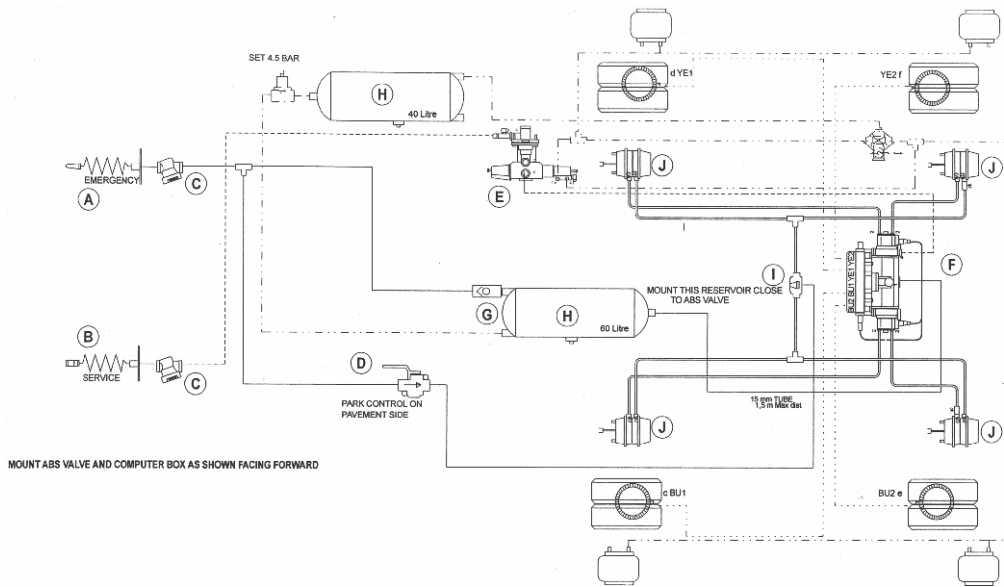


NOTE:
 MOUNT ABS VALVE AND COMPUTER BOX AS SHOWN FACING FORWARD
 OPTION 1 IS RECOMMENDED PARTICULARLY ON LONG VEHICLES AND TANKERS

TRIDEM AXLE SEMI TRAILER BRAKE SYSTEM S.A.B.S. 1506 SPECIFICATION
 RELAY LOAD SENSING VALVE FOR MECHANICAL SUSPENSION
 6 X SPRING BRAKES

TITLE
 TRIDEM AXLE
 SEMI TRAILER 4S/2M ABS
 MECH SUSPENSION

TANDEM axle semi trailer ABS air suspension



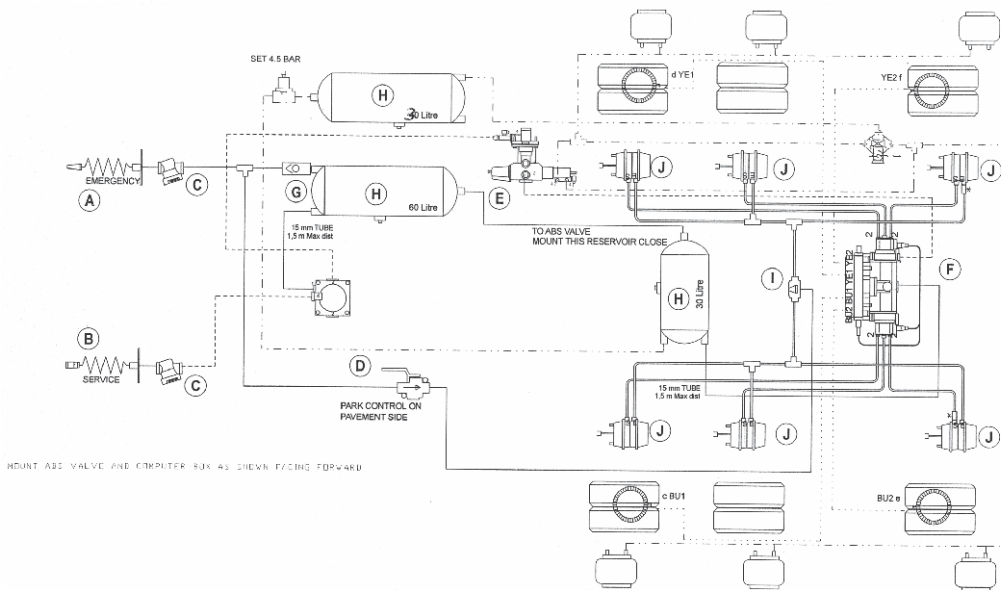
MOUNT ABS VALVE AND COMPUTER BOX AS SHOWN FACING FORWARD

RUBBER HOSE
 EMERGENCY LINE RED
 SERVICE LINE YELLOW

TANDEM AXLE SEMI TRAILER BRAKE SYSTEM - S.A.B.S. 1506 SPECIFICATION
 NEW GENERATION ABS LOAD SENSING VALVE FOR AIR SUSPENSION
 NOT A RELAY LOAD SENSING VALVE
 4 X SPRING BRAKES

TITLE
TANDEM AXLE
SEMI TRAILER 4S/2M ABS
AIR SUSPENSION

TRIDEM axle semi trailer ABS air suspension

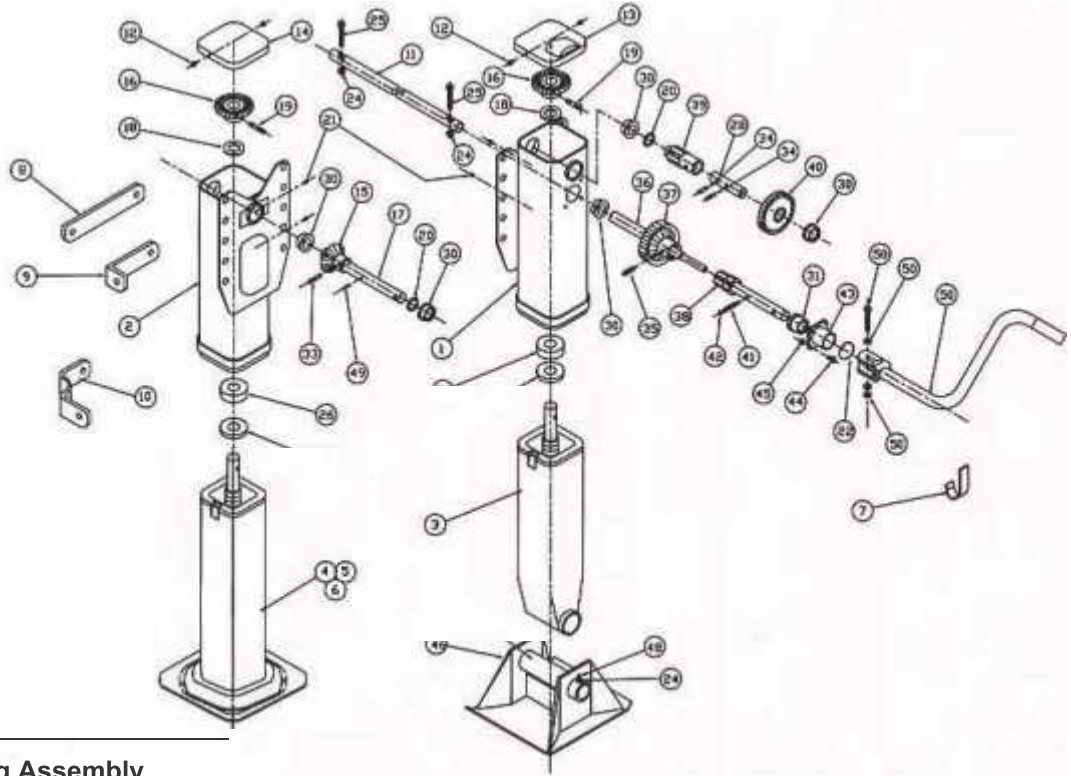


MOUNT ABS VALVE AND COMPUTER BOX AS SHOWN FACING FORWARD

RUBBER HOSE
 EMERGENCY LINE RED
 SERVICE LINE YELLOW

TRIDEM AXLE SEMI TRAILER BRAKE SYSTEM - S.A.B.S. 1506 SPECIFICATION
 NEW GENERATION ABS LOAD SENSING VALVE FOR AIR SUSPENSION
 NOT A RELAY LOAD SENSING VALVE
 6 X SPRING BRAKES OR 4 X SPRING BRAKES AND 2 X BOOSTERS ON STEERING AXLE

TITLE
TRIDEM AXLE
SEMI TRAILER 4S/2M ABS
AIR SUSPENSION



Shift Housing Assembly

Includes Items 22, 41, 42 & 43 above

Part Number – B10229S

Input Gear & Shift Housing Assembly

Includes Items 22, 38, 41, 42 & 43 above

Part Number – B10285

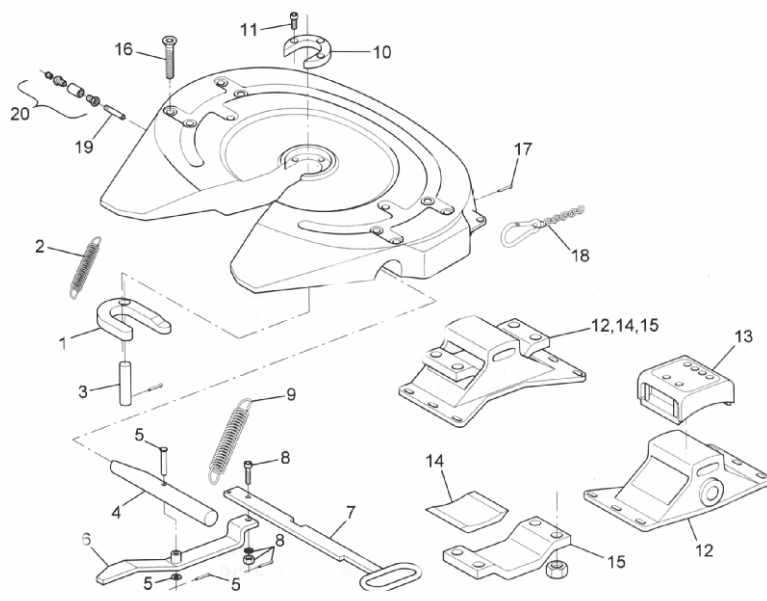


Individual Components

Item	Description	Qty	Part No.
7	Crank Hanger	1	B10261
8	Brace Lug - Flat	2	C10262
9	Brace Lug - 90°	2	C10263
10	Brace Lug – W Standard	2	C10108
11	Intermediate Cross Shaft	1	B10066
12	Cover Screw	4	A10059.1
13	Cover – Two-Speed	1	C10217
14	Cover – One-Speed	1	C10259
15	Pinion Gear	1	C10177
16	Bevel Gear	2	C10155
17	Pinion Shaft – One-Speed	1	B10130
18	Thrust Washer	2	A10102
19	Grooved Pin	2	A10052.3
20	Spacer Washer	2	A10218
21	Grease Fitting	4	A10040
22	Grease Seal	1	A10283
23	Strut Brace (not shown)	4	C10209
24	Self Locking Nut	4	A10038.7
25	Cross Shaft Bolt – 3/8 x 2" Gr 5	2	A10037.1
26	Thrust Bearing	2	A10033
27	Collar	2	A10101
28	Output Shaft	1	A10212
30	Bushing (Standard)	5	A10255
	Bushing and Seals (Magnum)	5	A10727
33	Roll Pin – 3/8 x 1 1/2"	1	A10054.3
34	Spiral Pin	2	A10260.1
35	Roll Pin – 3/8 x 1 3/4"	1	A10054.7
36	Output Cluster Shaft	1	B10236
37	Output Cluster Gear	1	C10234
38	Input Gear Shaft	1	C10233
39	Output Spur Gear	1	C10078
40	Input Spur Gear	1	C10085
41	Detent Spring	1	A10049
42	Detent Ball	2	A10048
43	Shift Housing	1	B10229
44	Shift Housing Bolt	4	A10230
45	Self Locking Nut	4	A10038
	Shoe – 10" x 10" x 4 1/2" Standard	2	C10035
46	Shoe – 10" x 10" x 2"	2	C10135
	Shoe – 10" x 12" x 4 1/2"	2	C10256
	Shoe – 10" x 12" x 2"	2	C10257
47	Shoe Axle	2	B10036
48	Hex Head Bolt	2	A10037.3
49	Roll Pin 1/4" x 1 1/4"	1	A10054.6
50	Standard Crank Hardware	1	C10592.2

36C fifth wheel

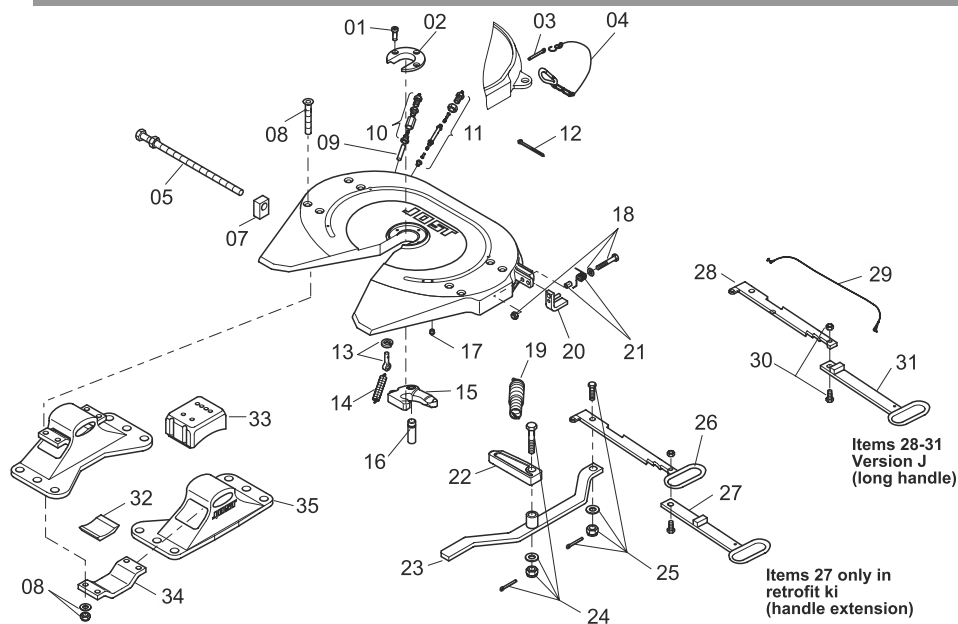
- 1 lock jaw SK 2105-15
- 2 lock jaw spring SK 847
- 3 pivot for lock jaw SK 2121-13
- 4 locking bar SK 2106-31
- 5 Locking bar bolt SK 2121-14
- 6 lever SK 2105-01
- 7 operating handle SK 2105-07
- 8 head bolt SK 1513
- 9 double tension spring SK 2105-11
- 10 wearing ring SK 2105-19
- 11 socket head bolt SK 2121-07
- 12 Pedestal non-weldable SK 2104-02
- Pedestal - weldable SK 2104-02X
- 13 upper rubber cushion SK 1259
- 14 lower rubber cushion SK 2105-25
- 15 mounting bracket SK 1372
- 16 hex bolt SK 60
- 17 split pin SK 1974
- 18a spring hook, chain & wedge SK 1436V
- 18b springhook compl with chain SK 1436
- 19 lubrication fitting SK 2105-28
- 20 grease nipple complete SK 1976
- 21 adjusting screw SK 2121-76



Type	Overall Height mm	Imposed Load On Tractor kg	D-Value kN	Weight Approx. kg	Evidence Number
JSK 36 C/150	150	20000	152	157	9007-10
* JSK 36 C/170	170	20000	152	160	
JSK 36 C/185	185	20000	152	162	
* JSK 36 C/250	250	20000	152	170	DR 62.63
* JSK 36 C/300	300	20000	152	185	S1773-1990

37C fifth wheel

- 1 socket head bolt SK 2121-07
- 2 wearing ring SK 2105-19
- 3 split pin SK 1974
- 4 spring hook SK 1436
- 5 adj screw SK 3105-150
- 7 guide SK 3205-07
- 8 counters'nk bolt SK 2121-15
- 9 lube tube SK 1989
- 10 nut & bolt SK 1976
- 12 cable tie SK 3121-13
- 13 eye bolt, comp SK 2122-04
- 14 tension spring SK 847
- 15 lock jaw SK 1489
- 16 bolt SK 2106-67
- 17 threaded stopper 000.010.021
- 18 Hex bolt, compl. SK 3521-03
- 19 dbl. tension spring SK 3105-20
- 20 latch complete SK 3121-52
- 21 spring noose w/spacer SK 3121-59
- 22 locking bar SK 3205-06
- 23 lever SK 3105-18
- 24 bar bolt, compl SK 3221-01
- 25 hex bolt, comp SK 1513
- 26 handle SK 3105-15
- 28 locking bar for type j SK 3105-115
- 29 latch cord, compl SK 3521-02



- 30 hex bolt compl SK 2421-50
- 31 handle for type j SK 3105-113
- 32 lower rubber cushion SK 2105-25
- 33 upper rubber cushion SK 1259
- 34 bridge SK 1372
- 35 pedestal SK 2104-02

Items 27 only in retrofit kit (handle extension)

Items 28-31 Version J (long handle)

					SK 1489-2 - 37C
WEAR RING	LOCKING BAR - JSK 36	UPPER RUBBER CUSHION	LOWER RUBBER CUSHION	LOCKING JAW	
SK 2105-19	SK 2105-17	SK 1259	SK 2105-25	SK 2105-15 - 36C	
					SK 3105-18- 37C
LOCKING BAR - JSK 37	DOUBLE TENSION SPRING	SPRING HOOK	MOUNTING BRACKET	LEVERS	
SK 3205-06	SK 2105-11			SK 2105-01- 36C	
					
CRANK & HANDLE	CRANK HOLDER	OPERATING HANDLES - 36C (TOP) 37C (BOTTOM)		LOCK CATCH	
		SK 2105-07	SK 3105-15 - 37C	SK 3105-18	
					
O/HANDLE SOCKET H/BOLT	37C BAR BOLT	36C LOCKING BAR BOLT	37C LOCK JAW PIVOT	36C LOCK JAW PIVOT	
SK 3221-01		SK 2122-25	SK 2106-67	SK 2121-13	

HYVA cylinders, PTO's, oil tanks, pumps, valves & components

A full range of HYVA products are now available. Contact us for assistance.

			
PTO's and Adapters	valves		
			
air controls	HYVA pumps		
			
rear & side mounted oiltanks	power packs, controls & switches		





agriculture cylinders

underbody cylinders

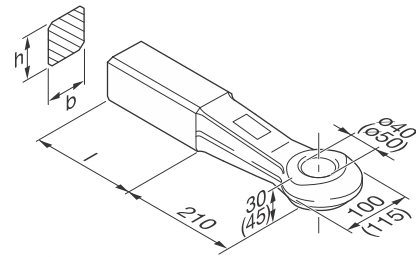
HYVA
Hyva Southern Africa (Pty) Ltd



suction adaptors

Towing Eyes

B Shape A for w



• Technical data

Image	ø (mm)	h x b (mm)	l (mm)	T		S (kg)	V (kN)	Weight (kg)	e1
				R	C				
				D (kN)	Dc (kN)				
	40	40 x 40	110	18	18	180	8	4,1	00-0739
	40	50 x 40	110	25	25	250	9	4,7	00-0740
	40	50 x 50	110	70	50	500	14	5,9	00-0741
	40	65 x 55	125	125	66	900	20	7,8	00-0743
	40	65 x 60	125	125	74	1000	23	8,2	00-0744
	50	65 x 60	170	130	90	1000	30	11,4	00-0625

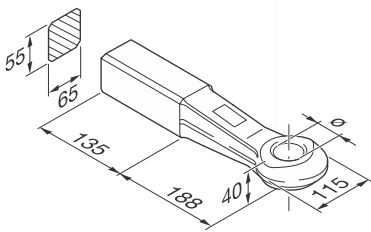


Image	ø (mm)	T		S (kg) ' V	Weight (kg)	e1 (kg)
		D (kN)	Dc (kN)			
	40	125	66	900	20,0	8,7
	40	168				8,7

Form B mit Schraubende • Shape B for bolting • Forme B avec extrémité vissée • Forma B con estremità a vite • Forma B con extremo atornillado

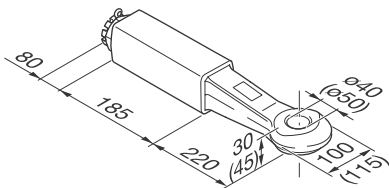


Image	ø (mm)	T		S (kg) ' (kN)	Weight (kg)	e1
		D (kN)	Dc (kN)			
	40	125	74	1000	23,0	11,0
	50	130	90	1000	25,0	12,6

Form C/D mit Flansch • Shape C/D with flange • Forme C/D avec platine • Forma C/D con flangia • Forma C/D con bri

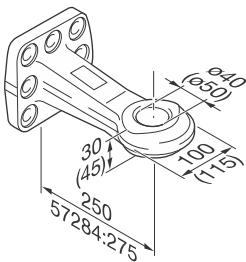


Image	ø (mm)	T		S (kg) ' (kN)	Weight (kg)	e1
		D (kN)	Dc (kN)			
	40	130	100	1000	35,8	8,8
	40	130	100	1000	35,8	8,8
	50	190	135	1000	72,5	9,5
	50	190	113	2500	43,2	9,5
	50	250	135	1000	90,0	17,9
	50	250	113	3000	43,2	17,9

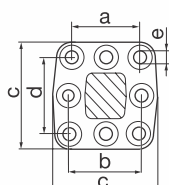
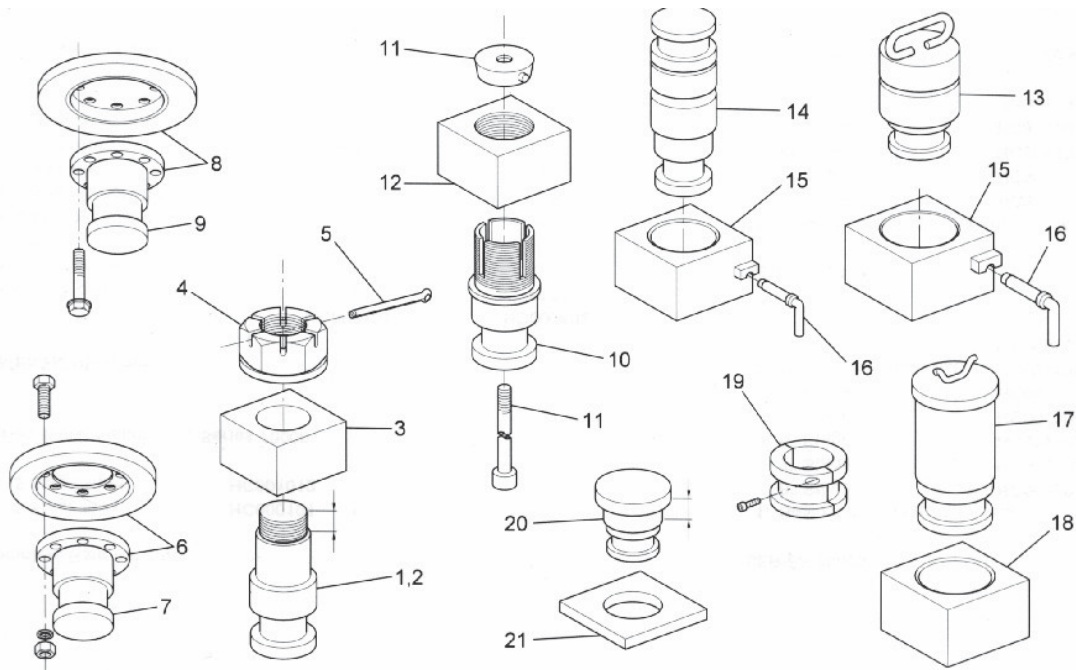


Image	a (mm)	b (mm)	c (mm)	d (mm)	e (mm)
		100±0,5	110±0,5	ca. 154	110±0,5
	100±0,5		ca. 154	110±0,5	17,0
	100±0,5	110±0,5	ca. 154	110±0,5	17,0
	130±0,3	130±0,3	190+4	130±0,3	21,0



1. Std 50mm Bolt in King Pin

Thread length 48mm
Thread length 33mm

2. 90mm King Pin to suit

500mm block -
NB: Temporary use only

3. Std 50mm King Pin Block -

For item 1 & 2
6mm thk Rubbing plate
8mm thk Rubbing plate
10mm thk Rubbing plate

4. Std King Pin Nut for

Item 1 & 2 above -
for 48mm thread length
For 33mm thread length

5. Split pin 8 x 140

6. 50mm King Pin

Underside renewable -
Complete assembly -
For 6 & 8mm Rubbing plate

For 10 & 12mm Rubbing plate

7. 50mm King Pin item 6

8. 50mm King Pin
Underside Renewable -
Complete assembly -
For 8mm Rubbing plate
For 10mm Rubbing plate

9. 50mm King Pin for Item 8

10. 50mm King Pin
underside renewable -
Complete assembly -
items 10 & 11
King Pin only item 10

11. Taper lock & bolt

12. 50mm King Pin Block -

For item 10 above

13. Drop in King Pin c/w handle -

50mm King Pin
90mm King Pin

14. Drop in Double Ended -

50mm & 90mm King Pin

15. King Pin Block -

For items 13 & 14 above

16. Locking Pin for King Pin Block -

For item 15 above

17. Drop in King Pin c/w

Handle -
50mm King Pin
90mm King Pin

18. King Pin Block -

For items 17 above

19. Conversion Split Collar -

50mm to 90mm c/w
Socket hd capscrews

20. 90mm King for Dolly -

Shank length 35mm
Shank length 37mm

21. 90mm King Pin Plate -

For item 22 above

KING PIN Combinations



NEW!!

Patented design

- Brand new design
- latest technology
- all material SABS appr.
- Block - En8 / Kingpin En19T
- NO MORE Split pin & nut
- NO NEED to heat block anymore... simply insert and weld

kingpin combo
tomorrow's technology..today

Prt no: 14KN005



tapered kingpin
complete with block & nut



Couplings

All MAXLAMP products are top quality and SABS approved



MAXLAMP 1
RED - Prt No: 10TL004M



MAXLAMP 1
AMB Prt No: 10TL005M



MAXLAMP 1
Clear Prt No: 10TL006M



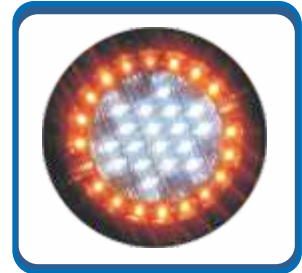
MAXLAMP 2
Prt No: 10TL005BM



MAXLAMP 2
Red Prt No: 10TL006BM



MAXLAMP 3 - Dual
Rev/Ind - 10TL022M3



MAXLAMP 3
Reverse/Indicator



MAXLAMP 3 - Dual
Prt No: 10TL023M3

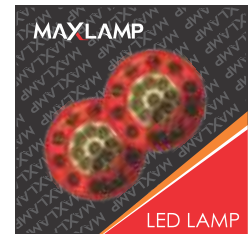


MAXLAMP 3
Stop/Tail/Indicator



MAXLAMP 4
10TL024MV3R/Y:

MAXLAMP



Stop/Tail/Rev



MAX Marker Lamps
Red - 10ML
Green - 10ML016
Amber - 10ML015
Clear -
Globe type & L.E.D



Tail Lamps - Globe type
Red - 10TL001C
Amber - 10TL002C
Clear - 10TL003C

Replaceable Globe Type - Stop/
tail lamp & Indicator lamp ass'y,
Rubber Grommet



GLOBES

- P25-1 Single Pole Single Filament for Stop or Indicator Lamp
 - 24V - 21W
 - 12V - 21W
- P25-2 Double Pole Double Filament for Stop/Tail Lamp
 - 24V-21.5W
- R19/5 Single Pole Single Filament for Tail or Number Plate Lamp
 - 24V-5W & 12V-5W
- T8/4 Single Pole Single Filament for Tail or Number Plate Lamp
 - 24V-5W & 12V-5W





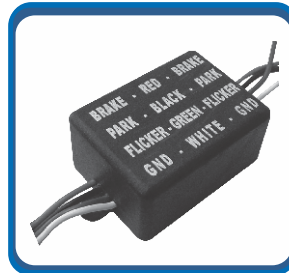
Numberplate LED

Prt No: 10NP004



Numberplate LED

Prt No: 10TL005 T115



Interface Box



Terminal Junction Box



7 Core and 5 Core
7 core - 5 pin plugs
7 core - 7 pin plugs
12 N7

Green Mamba

Prt No: 10GM002



Black Mamba

31 coils / 30mm ID

Loom with fittings

Prt No: 10BM003



Black Loom

14 coils / 90mm ID

Prt No: 10GL001



Cabletyre

Prt No: 11CT002/6/7



Reverse Alarm

Prt No: 10BB001/002



Battery Terminals

Prt No: 10BT001 + / 2 -



Metal Flanges

Prt No: 10TL011M



Prt No: 10TL011F

steel

plastic

Plastic Flanges

Prt No: 10TL011P



Electrical Plug - Steel

Prt No: 10TP001H

5 pin plug (2 pins-3 sockets)
7 pin plug 12 N7 (4pins - 3 sockets)
7 pin plug 24 N7 (7 pins)



Electrical Socket Steel

Prt No: 10TS001H

5 pin socket (3 pins- 2 sockets)
7 pin socket 12 N7
(3 pins - 4 sockets)
7 pin socket 24 N7 (7 sockets)



Electrical Plug - Plas

Prt No: 10TP006B



Electrical Socket Plas

Prt No: 10TS005



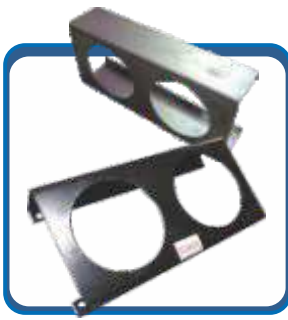
BIGMAX
PREMIUM BATTERIES

www.tsebigmax.co.za

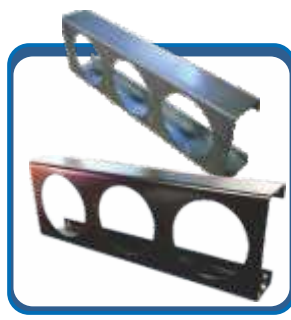
POWERED BY **DIXON**
PREMIUM BATTERIES

We carry a full range of all popular battery models. Big Max Premium Batteries are powered by DIXON, a partnership of quality & reliability





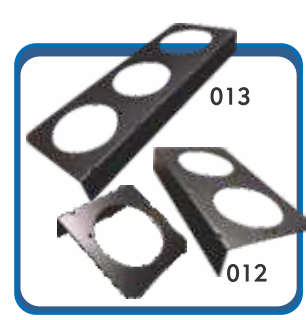
2 hole lightbox
Prt No: 11LB002P



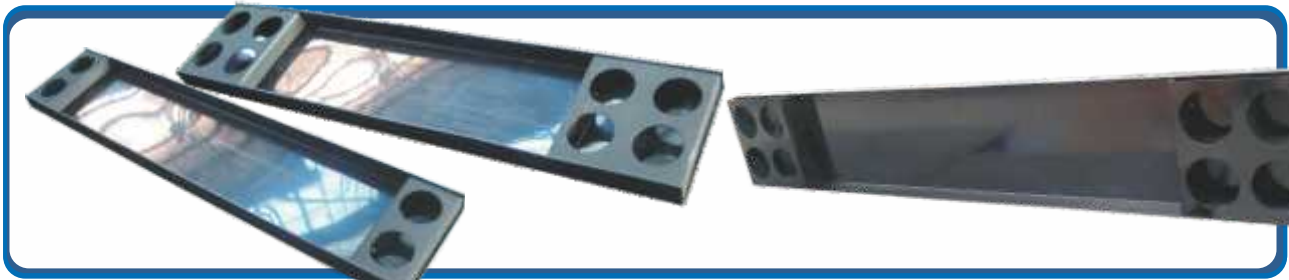
3 hole lightbox
Prt No: 11LB003



4 hole lightbox
Prt No: 11LB009



lightbox flanges
Prt No: 11LB011



Tailboards - Polyprop

Tailboards - Steel

1.7m 4 Hole Tailboard	Prt No: 11TB001
1.7m 8 Hole Tailboard	Prt No: 11TB010
1.9m 4 Hole Tailboard	Prt No: 11TB002
1.9m 8 Hole Tailboard	Prt No: 11TB011

2.1m 4 Hole Tailboard	Prt No: 11TB003
2.1m 8 Hole Tailboard	Prt No: 11TB007
2.4m 4 Hole Tailboard	Prt No: 11TB006
2.4m 8 Hole Tailboard	Prt No: 11TB004

STEEL OR POLY FINISH



AVAILABLE IN:



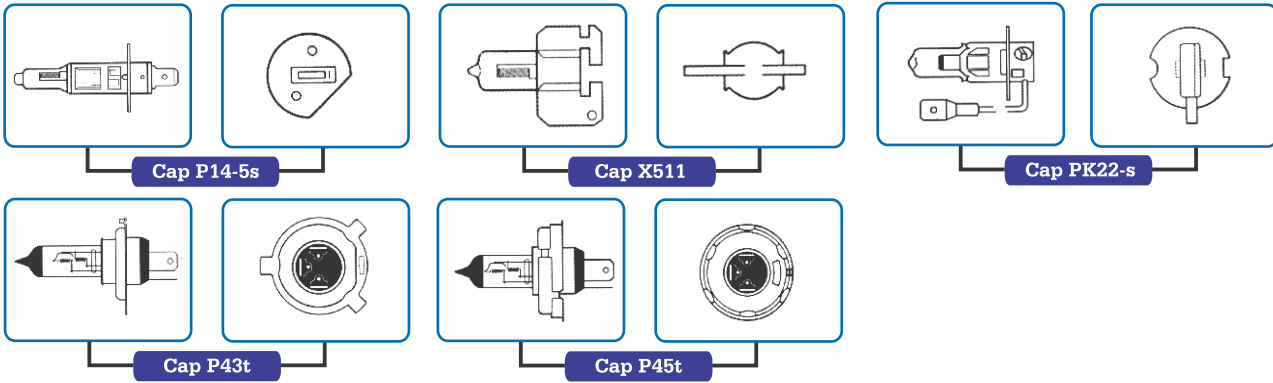
AVAILABLE IN:



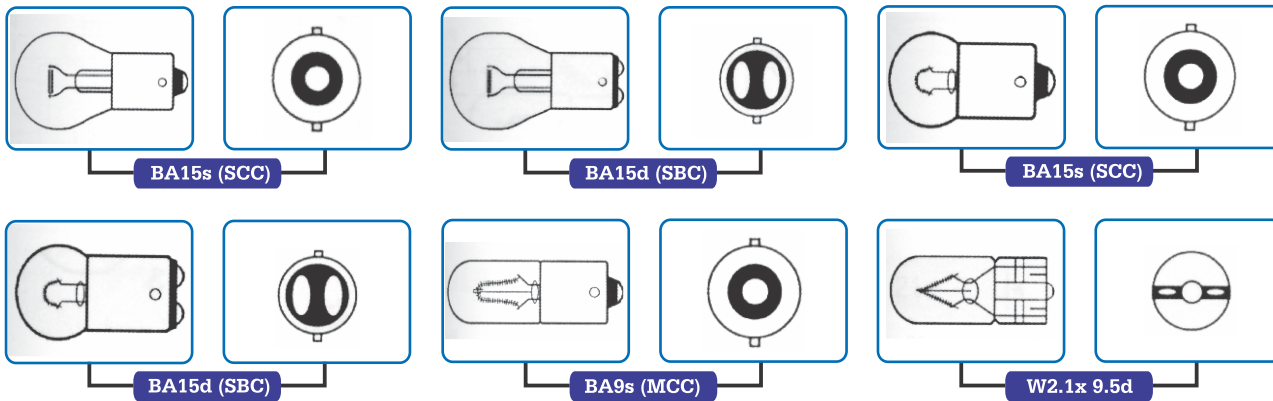
AVAILABLE IN:



tungsten halogen headlamps

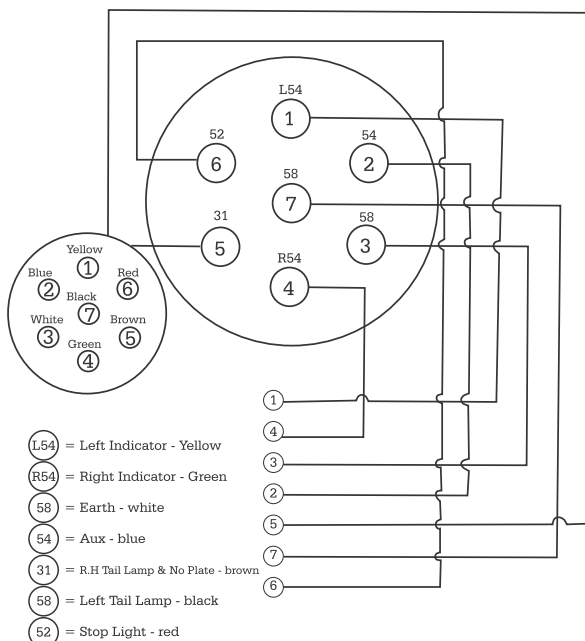


commercial vehicle bulbs, stop - tail - flasher bulbs

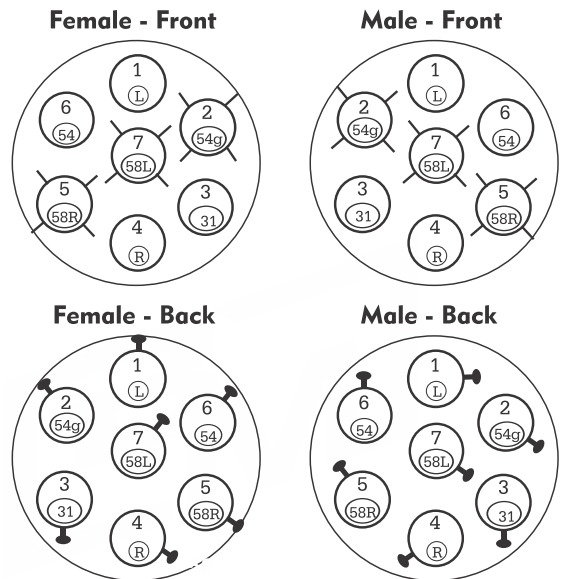


7 pin male and female wiring diagrams

7 pin male coupling



7 pin female coupling



MARKING

- 1. Yellow (L) Left Indicator
- 2. Blue (54g) Aux or Caravan
- 3. White (31) Earth
- 4. Green (R) Right Indicator
- 5. Brown (58R) R/H Tail Lamp + No Plate Lamp
- 6. Red (54) Stop Light
- 7. Black (58L) Left Tail Lamp

trailer accessories - STEMCO hubodometers

Whether for maintenance purposes or logging kilometers, accuracy is critical. So, if your hubodometer does not give you an honest, accurate calculation of kilometers travelled, you're losing money and profits. At STEMCO, we build a drive-less hubodometer guaranteed to deliver mileage accuracy within +/- 2% (based on the life of the tyre). With construction so durable, we back it with a 750 000km warranty.



Part No: 11HM 001

Features and Benefits

- Spring loaded counterweight virtually eliminates spin when the tyres hit bumps and potholes, assuring you of greater accuracy.
- Hubodometers are calibrated to perform on over 2500 specific tyre models and sizes to further ensure reliable mileage information.
- The STEMCO hubodometer is an indispensable tool for scheduling maintenance determining lease charges, validating guarantees and calculating cost per kilometer.



With more than 1 Million miles of testing, the DataTrac shows unparalleled accuracy.

- Large, Easy to read display
- Compact Size simplifies Tyre Service
- Years of Reliable Service with NO MOVING PARTS

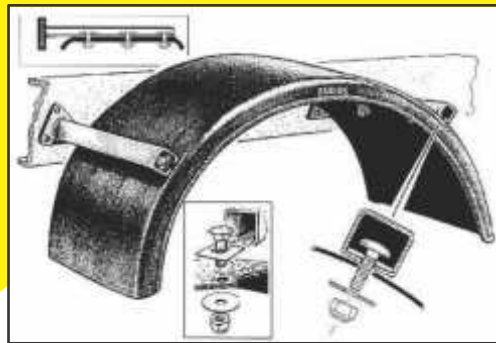


Part No: 11HM 003

Features and Benefits

- Large, easy to read LCD - makes data retrieval simple and accurate. Optional flexibility of trip and life readings for precise data management and collection.
- Numbers automatically position upright for easy verification of mileage.
- Compact size makes it easy to mount and dismount tyres without removing DataTrac from wheel.
- NO moving parts, provides improved readability and durability for the most demanding vocational applications. Each unit is marked with a unique serial number: providing security and control.
- Long Life Battery allows for 4 year, 500 000 mile warranty.

trailer accessories - PARLOK toolboxes & mudguards

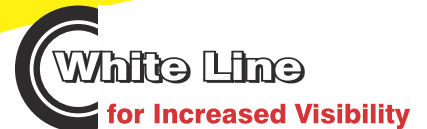


labour saving installation

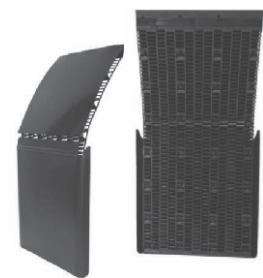
Toolboxes

Produced of high quality high density polyethylene (HDPE) plastic. HDPE is recycable raw material. Modern design. Easy to fit, fixing brackets included.

- Light in weight • High resistance to impact
- High resistance to temperature extremes
- very good chemical resistance
- do not need painting, do not rust
- Lockable



Parlok Mudguards are suited for installation to trailers, tractor units and rigid vehicles



Supra Spray Suppression Mudflaps

- improves road safety during wet conditions
- Improved visibility to following vehicles
- Improved Rear vision to drivers

Available in single and dual wheel





Part no: 07 LW 001- 5"

load winch

Part no: 07 LW 003- 6"



load ratchets

Part no: 07 LR 001



available in all popular colours

9m strap w/tail

Part no: 07 LS 001



Part no: 07GH001-10mm

grab hook

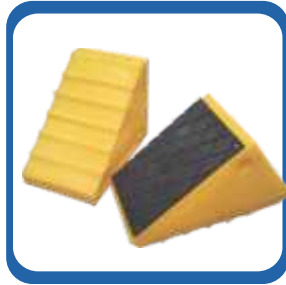
Part no: 07GH003-13mm



available in all popular colours

wheel chocks

Part no: 11 WC 001



Heavy duty chocks

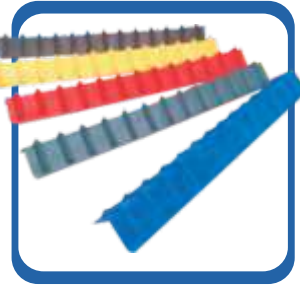
Part no: 10 WC 002



available in all popular colours

1.2m corners

Part no: 11 CN 001



2.0m corners

Part no: 11 CN 002



load binder - ratchet

Part no: 07 LB 005



Part no: 07LB001 -10mm

load binder - lever

Part no: 07LB002 -13mm



container block

Part no: 07CC001



drop side wedge

Part no: 07DW002C



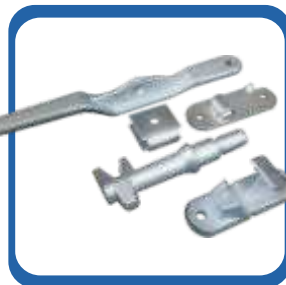
twistlock - single

Part no: 07TL001L



twistlock - double

Part no: 07TL005



locking device

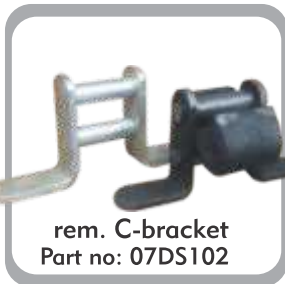
Part no: 07LD001



Part no: 07LH001-12mm

trailer hooks

Part no: 07LH002-16mm



rem. C-bracket
Part no: 07DS102

rem. dropside hinge

Part no: 07DS004



ratchet type

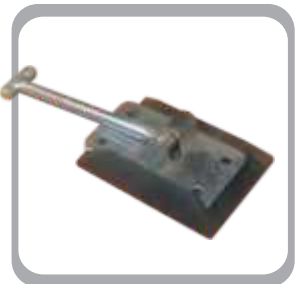
curtain tensioners

Part no: 07CT001L / R



z-handle worm type

Part no: 07CT003H



door catch

Part no: 11DL005



anti-luce fasteners

Part no: 11AL001/002



max jack - 30ton

Part no: 09MJ001



hydraulic bottle jacks

Part no: 09BJ



fire extinguishers

Part no: 11FE



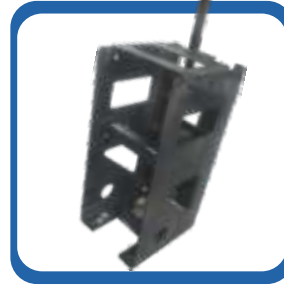
extinguisher brackets

Part no: 11FB



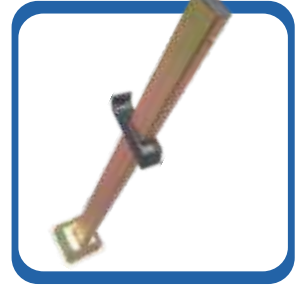
warning triangle

Part no: 06WT001



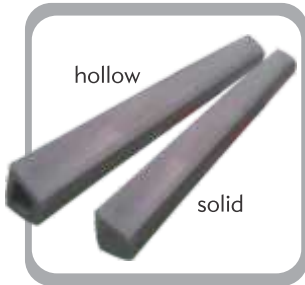
spare wheel carrier

Part no: 08SC001



wheel mate

Part no: 11W001

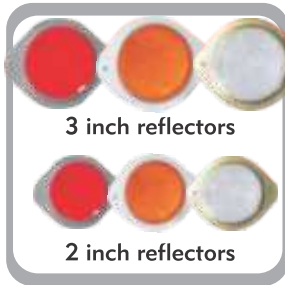


hollow

solid

d - rubbers

Part no: 11DR001



3 inch reflectors

2 inch reflectors

round reflector w/bracket

Part no: 06RF



warning cones

Part no: 06WC001



rect. stick-on reflectors

Part no: 06RF



oralite - reflective

Part no: 06RT001



3M reflective tape

Part no: 06RT005



red flags

Part no: 06FL001



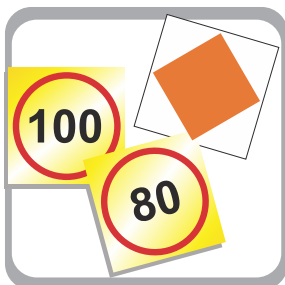
1.7 metre

1.8 metre

available in chromadek & stick-on
Part no: 06CH009/10SO

chevrons

Part no: 06CH001 / 2



reflective signs - various

Part no: 06WS



abnormal signs

Part no: 06AB



document holders

Part no: 11DH101



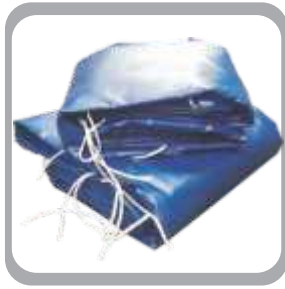
13mm

Part no: 07CH002

10mm chain

Part no: 07CH001

trailer accessories - load and safety



tarpaulins

Part no: 07TP004 - 9x8

Part no: 07TP106 - 9x9



cargo net

Part no: 07NT005 - 7x8

Part no: 07NT015 - 9x8



diesel cap - 2pin non-loc

Part no: 11AC019



diesel cap - 3pin non-loc

Part no: 11AC020

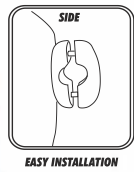
truck accessories - universal mirrors



large: 420 x 200 x 3

501 - 109 mirror - lrg

Part no: 109



medium: 360 x 170 x 3

101 mirror - med

Part no: 101



440 x 190 x 3

228 merc mirror

228 (H) with heater



234 roof heater

Part no: 234

trailer accessories - polyprop & rubber mudflaps

available in polyprop and rubber - all popular sizes



polyprop mudflaps available in:

600 x 400 -	Part no: 11MF023
600 x 600 -	Part no: 11MF024
600 x 700 -	Part no: 11MF025
600 x 900 -	Part no: 11MF026

we do silkscreen printing & branding on mudflaps as well, enquire now.



rubber mudflaps available in:

600 x 400 -	Part no: 11MF020
600 x 600 -	Part no: 11MF021

printed mudflaps

600x400	11MF0023P	600x700	11MF0025P
600x600	11MF0024P	600x900	11MF0026P

wide range of tools and toolbox sets to suit any workshop or personal requirement





- Various combinations available
- MAX Lock Nut sets come with 6 x nuts and 1 x key

various codes

04LN016 / 022

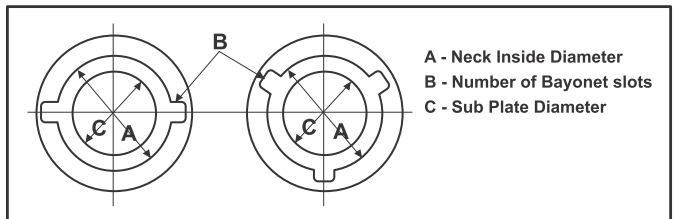
FUEL SAVERS			
max universal	11FS001	man/merc	11FS002
isuzu	11FS023	int. eagle	11FS003
daf	11FS015	nissan-short	11FS011
freightliner	11FS016	volvo-short	11FS004

FUEL SAVERS

Tired of losing a fortune from fuel and tyre theft? We have the solution...



Fuel Savers to match most models or else provide us with the info below so we could try having them made for you.



trailer accessories - max ultraseal tyre sealant



WARRANTY

MAX Ultraseal is guaranteed to seal porosity leaks, air migration & punctures up to 6mm in diameter within the tyre tread area for the legal life of the tyre. If the tyre casing is damaged or weakened to a point of being unsafe, the ULTRASEAL formulation has been designed to slowly bleed regardless of how small the puncture may be. Safety is a major concern of MAX Ultraseal.

TYRE LIFE EXTENDER

A MUST FOR YOUR TYRE MAINTENANCE PROGRAM.

A single MAX ULTRASEAL treatment will:

- Eliminate under-inflated tyres.
- Provide additional fuel economy.
- Make tyres run cooler.
- Make tyres last longer.
- Eliminate most flats and blow-outs.
- Preserve tyre casings.

MAX ULTRASEAL also guarantees that:

- Won't rust or corrode rims
- Won't ball up or dry up.

SUITABLE FOR TUBED & TUBELESS

MAX ULTRASEAL treatment will not void tyre manufacturers Warranty.

DOSAGE

12R22.5 - 1.77 Litres / tyre	11/20 - 1.72 Litres / tyre
315/22.5 - 1.80 Litres / tyre	7.50/20 - 1.90 Litres / tyre
385/22.5 - 2.07 Litres / tyre	11/22.5 - 1.50 Litres / tyre

- INSTALLATION**
- Balance your tyres and check for "out of round".
 - Place the valve between 5 & 7 o'clock position, remove the valve stem with a valve core remover tool and deflate the tyre.
 - Apply the correct amount by squeezing gently and allow air to return the bottle.
 - Screw valve core back into the tyre valve stem & inflate tyre to recommended air pressure. Rotate or spin the tyre to distribute sealant.
 - Allow product to coat inner tyre walls for the 1st 10km.

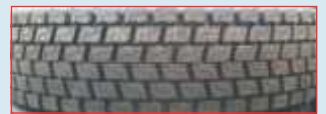
** THIS PRODUCT IS FOR USE IN TRUCK TYRES ONLY**

tyre sealant 1ltr 08TS001

trailer rims and tyres



12R22.5 - DRIVE



315/80R 22.5 - MULTIPURPOSE



385/65R 22.5 - MULTIPURPOSE



315/80R 22.5 - STEER / TRAILER

9.0012R 22.5
08WR011

we stock some trailer rims and tyres mainly as a service to our customers. contact us for more information.



TSE Big Max stock a variety of top quality Q8 Oil products.

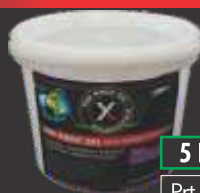
- Hydraulic Oil - ISO 68
- Gear Oil - 80W90 GL-4
- Gear Oil - 85W140 GL-5
- General purpose Lithium grease
- Lithium complex GP bearing grease
- ATF Transmission fluid

Q8 Oils
licensed distributor

THE MAX RANGE OF HIGH QUALITY CHEMICAL PRODUCTS

MAX MAGIC GEL

MULTI PURPOSE CLEANING GEL



- Domestic
- Automotive
- Industrial
- Workshops
- Medical
- Personal

5 Litre

Prt No: 11MG001

MAX ANTI-FREEZE COOLANT

PRE-MIX 50

NITRITE FREE

- ALL YEAR PROTECTION
- COOLER RUNNING ENGINE
- LUBRICATES WATER PUMP
- ELIMINATES SCALE & FUNGI BUILD UP

1 Litre

5 Litre

20 Litre



MAX SUPREME
LOOSEN ALL

GREAT VALUE, TOP QUALITY

- lubricates & cleans
- penetrates easily
- frees stuck mechanisms
- protects against rust
- moisture displacement

MAX BRAKE FLUID Dot4

MAX Dot4 Brake Fluid (400NV); for hydraulic brake systems. Due to its low deep temperature viscosity, the fluid is especially recommended for combined ABS, ASC, EBD and Conventional Brake Systems and has high, dry and wet boiling points

- PRODUCT DATA:** Fully compliant with the following specifications: FMVSS 116 DOT4/SAE J 1703/4 & ISO 4925
- The fluid is completely miscible with Dot 3.1% DOT 4.1 FLUIDS
 - ERBP: 260°C - WERBP: 180°C

1 Litre

5 Litre

20 Litre

MAX TRUCK WASH Superior Shampoo

MAX Truck wash is a strong, superior cleaning shampoo that delivers amazing cleaning results through a consistent release of light foaming bubbles. MAX Truck Wash is uniquely formulated foaming technology. It works by suspending super polymers within each bubble allowing grime and built-up dirt to be effortlessly rinsed away.

The unique lubricity of the shampoo loosens abrasive residue and allows it to be rinsed away without scratching the surface. The unique formulation retains lubricity and will not allow hard water to remain on the surface hence causing calcium deposits and water spots.



1 Litre

5 Litre

20 Litre

MAX ENGINE CLEANER & DEGREASER

- Rapidly removes, grease and dirt from engine compartment.
- Cleans quickly and thoroughly.
- Restores engine like new.
- Contains effective emulsifiers.

MAX Engine Cleaner is a water-based degreaser.

Recommended dilution: 3:1.

For stubborn dirt, use concentrate.

1 Litre

5 Litre

20 Litre





baldwin filters help improve system cleanliness. improving system fluid cleanliness levels, providing better cold start performance and meeting service interval expectations are the primary objectives in the design of Baldwin hydraulic filters. Baldwin is an industry leader in heavy-duty filters. TSE Big Max and Baldwin are committed to giving our customers the best products and service in the filter market-place.

turbochargers

THE POWER OF PEACE OF MIND



- Quality checked in South Africa
- Nationwide product support
- Nationwide availability
- Best value for money
- Warranties in place

HEAVY DUTY RANGE NOW AVAILABLE FROM TSE BIG MAX

OFFICIAL & SOLE AGENTS OF  **FONTAINE FIFTH WHEEL**



FIT FOR THE LONG HAUL