

FONTAINE FIFTH WHEEL SERVICE GUIDE

SERVICE CHECKS

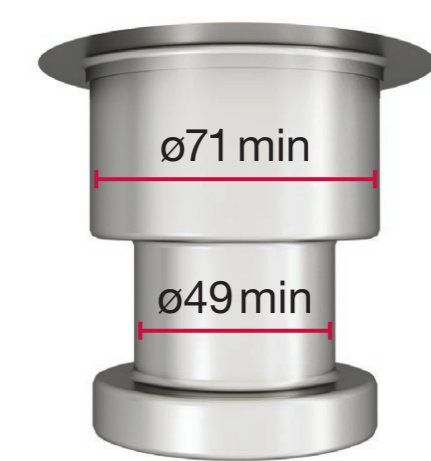
		10,000 KM 4-6 WEEKS	50,000 KM 24 WEEKS
Clean	Clean the fifth wheel mechanism and rubbing plate	✓	✓
Visual inspection	Inspect the fifth wheel for damage defects and cracks	✓	✓
Function check	Check the fifth wheel for function. See instruction manual for help.	✓	✓
Wear check	Refer to diagrams or instruction manual	X	✓
Adjustment	Refer to Adjustment Procedure or instruction manual	X	✓
Torque checks	Refer to diagrams or use instruction manual	✓	✓
Lubricate	Regrease with clean grease all points in diagrams	✓	✓

Grease Specification	Initial Lubrication
High pressure grease with a lithium or calcium base should be used for all lubrication.	Prior to going into operation, the top plate, locking mechanisms, and mounting bracket tube joints should be well lubricated using a high pressure grease (see above). This should be done even if the fifth wheel is connected to a central greasing system.

WEAR CHECKS

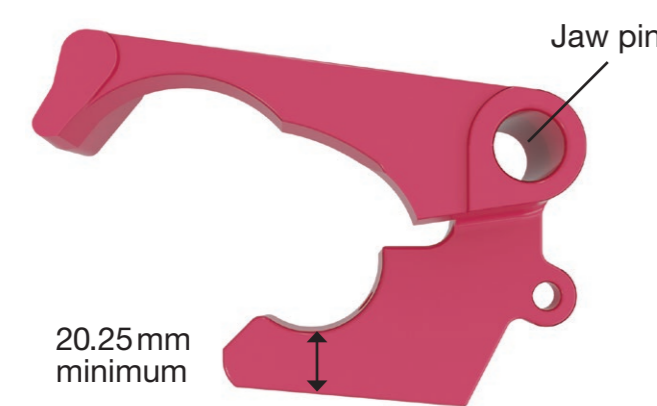
TRAILER KINGPIN

Check dimensions.



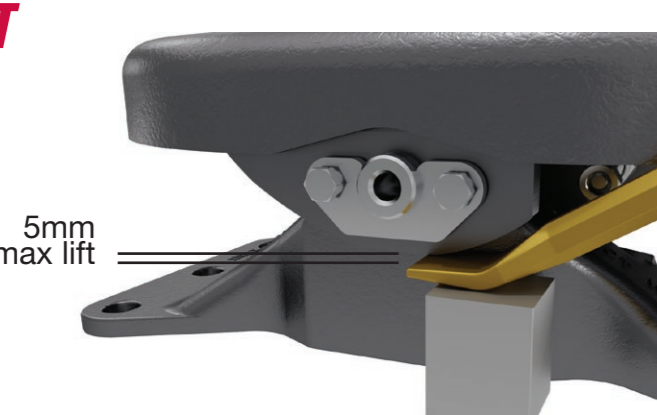
FIFTH WHEEL JAW

The jaw pin is only a pivot pin and is designed to be smaller than the hole in the jaw. This clearance enables the jaw to fully contact the kingpin and lockbar at all times.



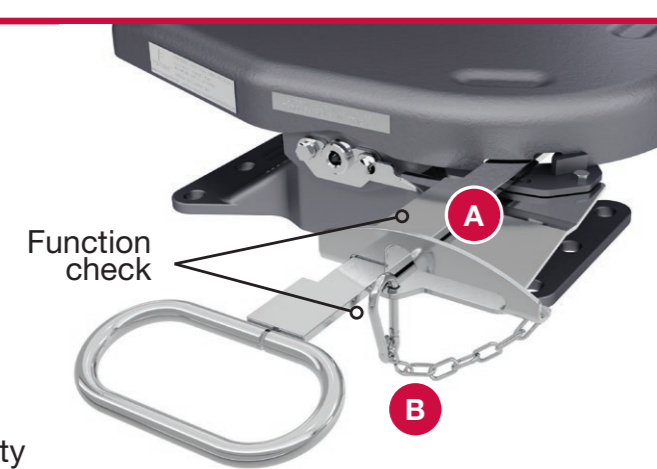
MOUNTING BRACKET LIFT

Using a lever check the foot bush for wear – 5mm maximum permissible lift. Do not use excessive force as this will compress the bush and give a false reading.



FUNCTION CHECK

- The fifth wheel is correctly locked when the inside notch in the handle is hidden under the fifth wheel top plate skirt and the safety clip can be fitted in the handle bracket hole.
- Ensure that the fifth wheel handle, handle bracket and safety clip are not bent or damaged and that the safety clip can be fitted into the handle bracket hole when the handle is fully closed.

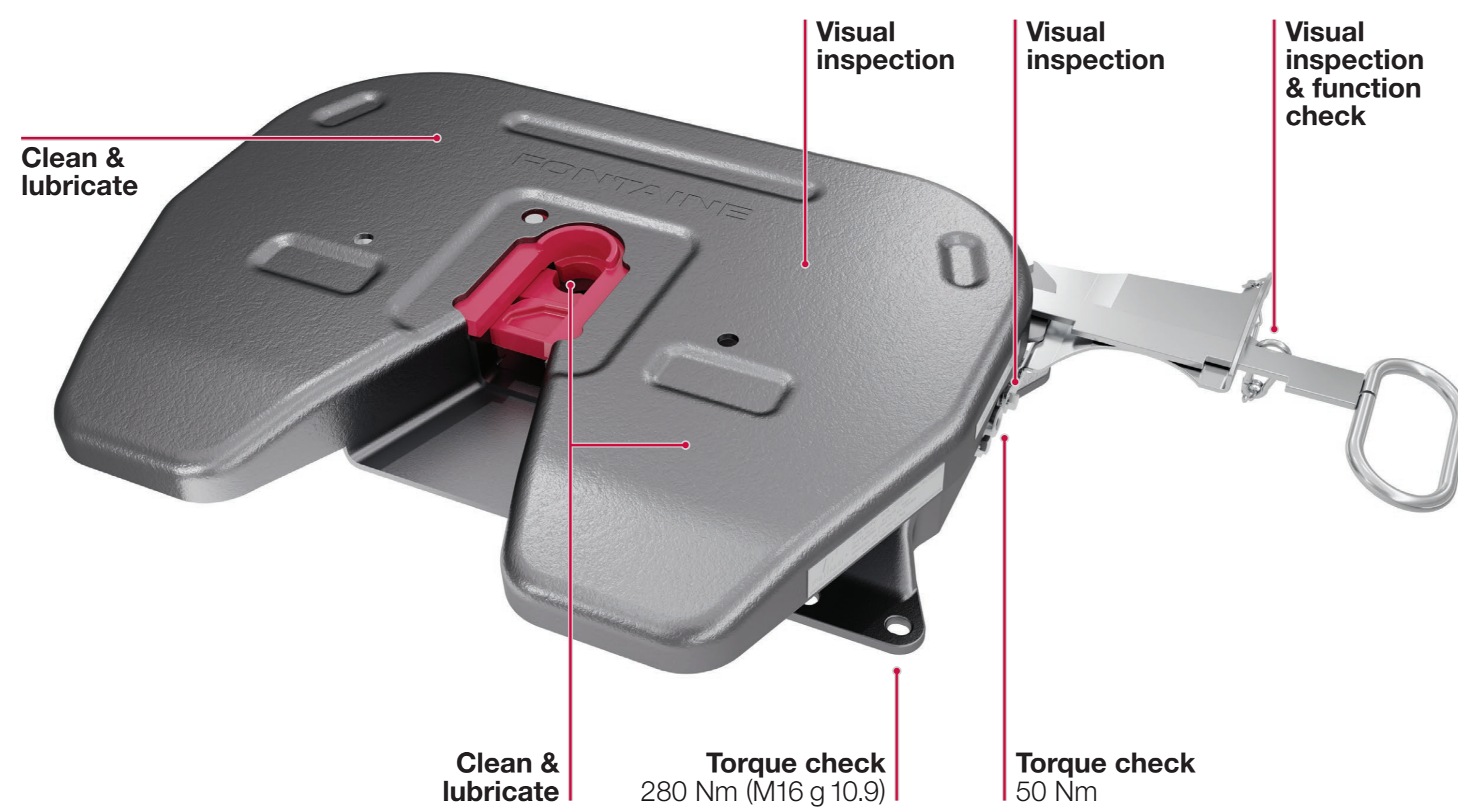


ADJUSTMENT PROCEDURE

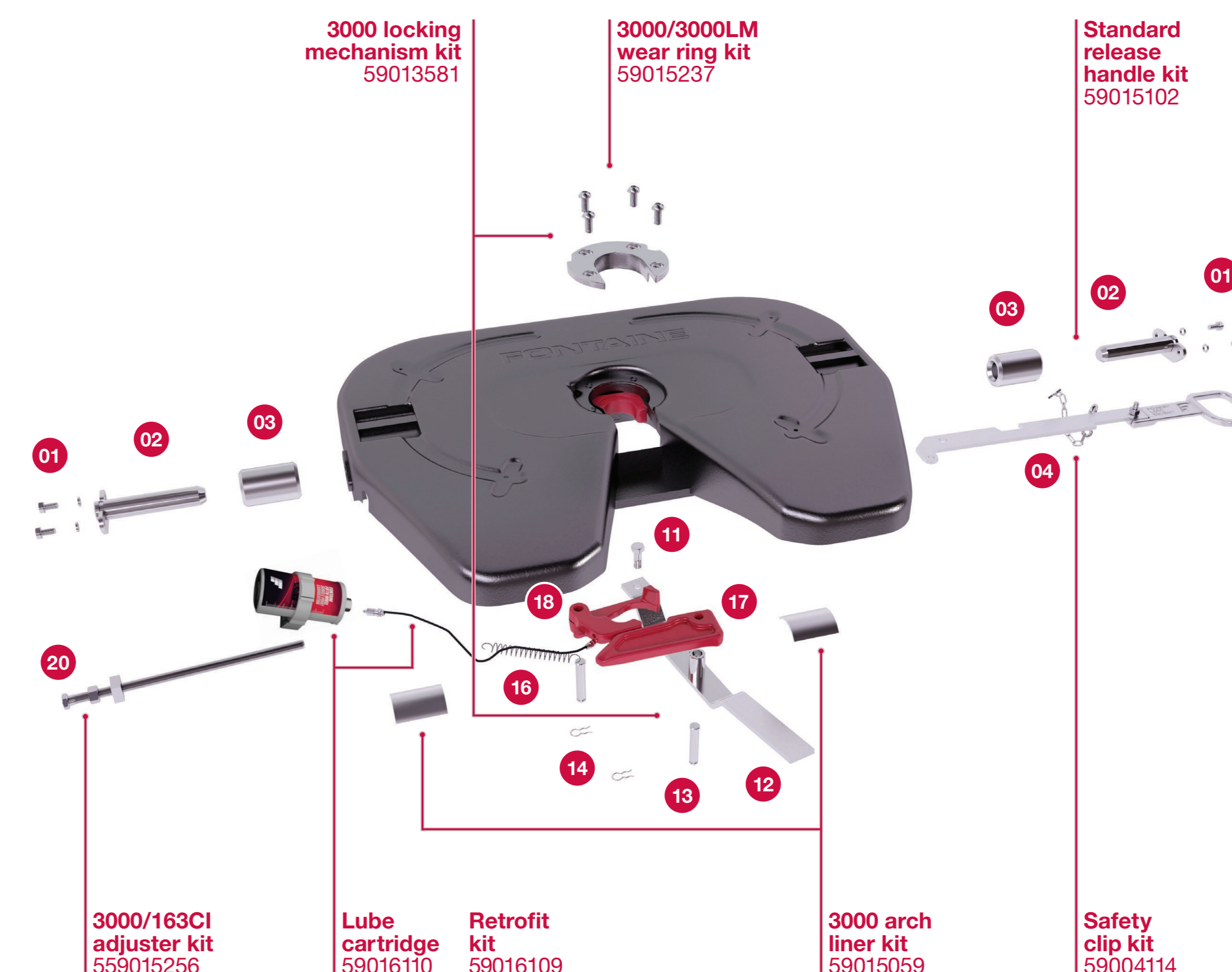
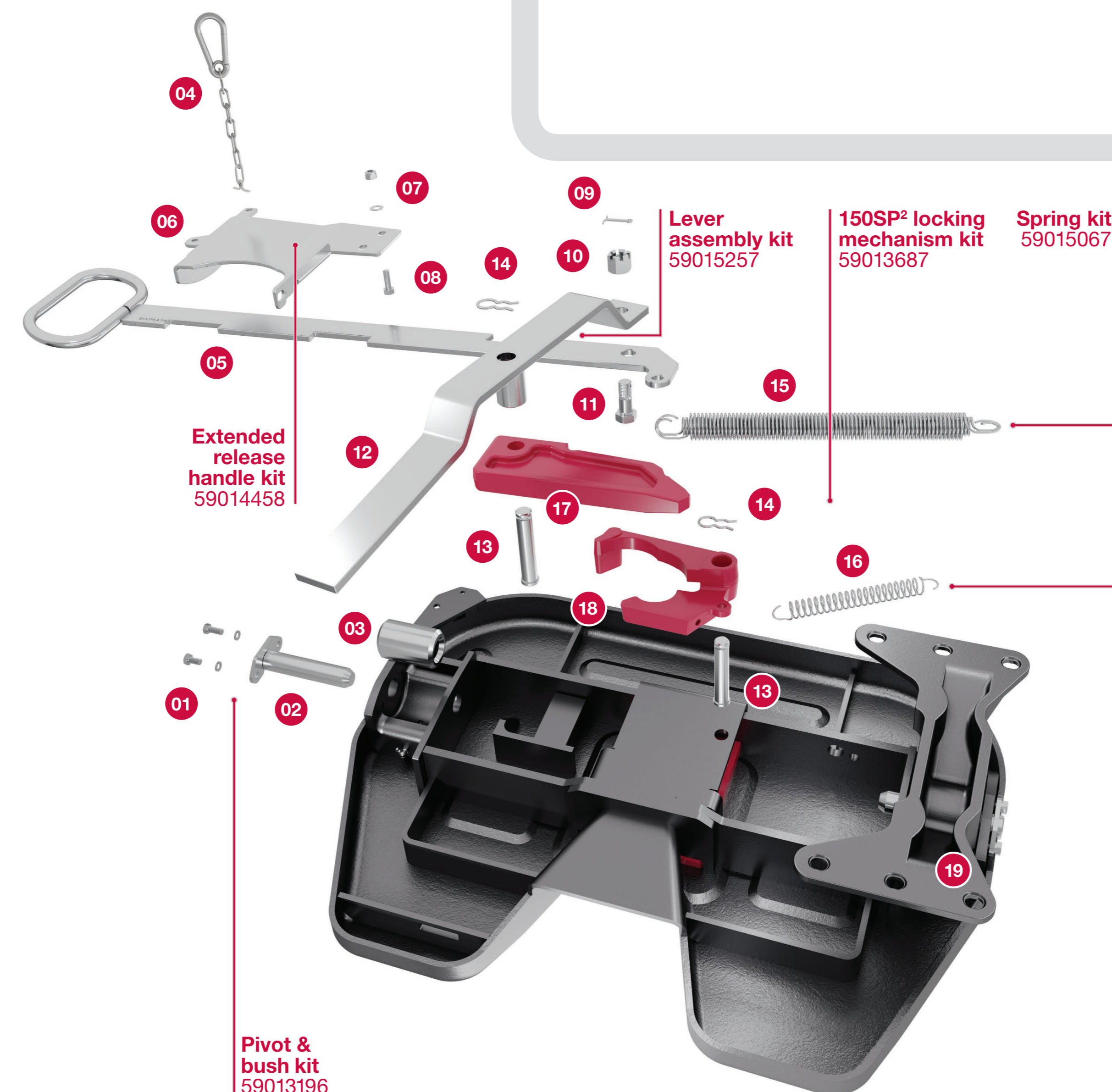
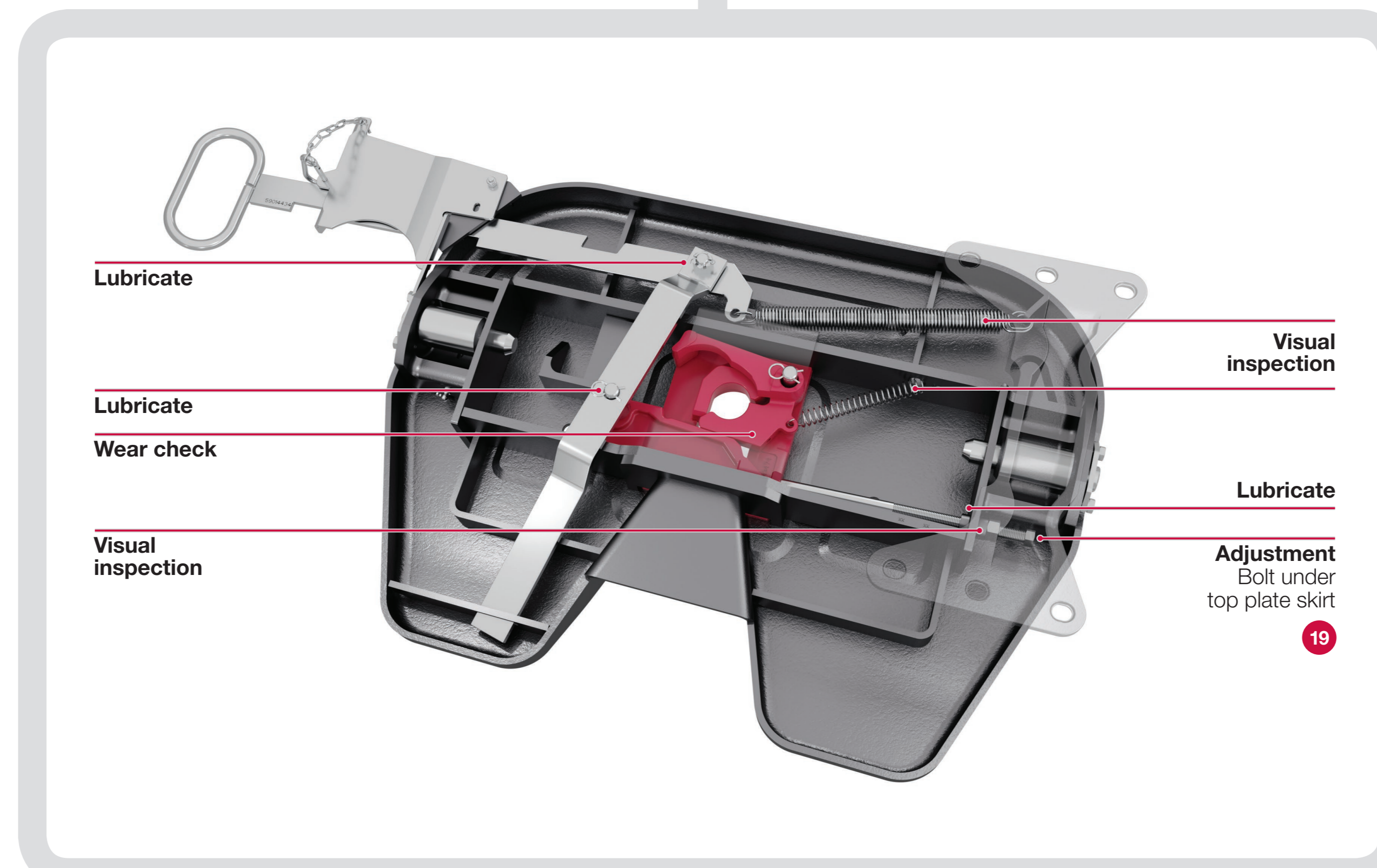
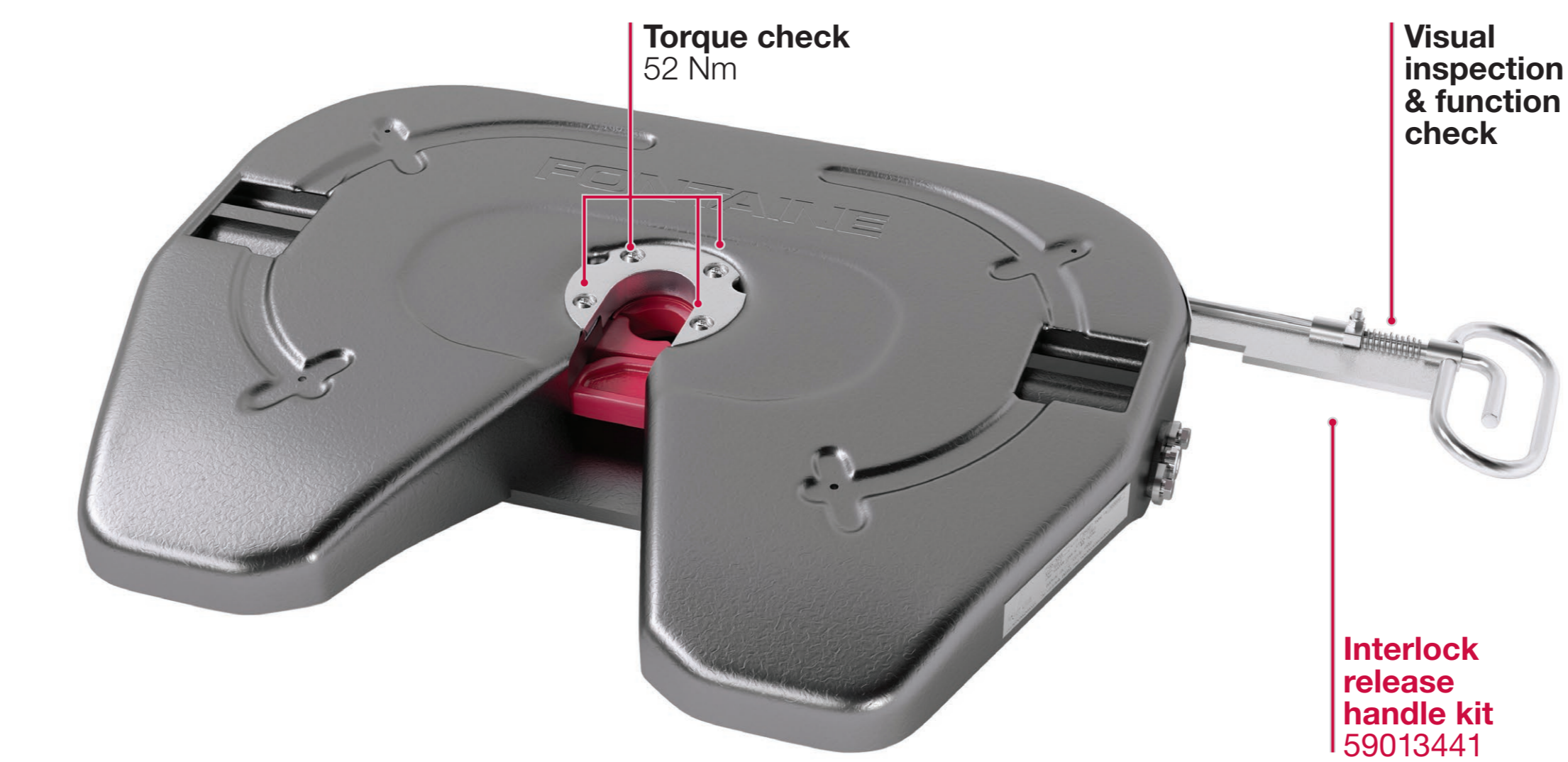
- Undo the adjuster locknut and wind the adjuster (anti-clockwise) until it is completely free from the end of the lockbar.
- Insert the new kingpin (or kingpin test unit Part No. 59004124) and ensure the mechanism fully closes.
- Screw the adjuster clockwise until it touches the end of the lockbar.
- Screw inwards a further 3 complete turns (to give 0.525mm running clearance).
- Tighten the adjuster locknut.
- Open fifth wheel and remove the kingpin/test unit.

FONTAINEFIFTHWHEEL.COM

150SP²



3000 / 3000LM



REPAIRS & SPARES

PIVOT & BUSH KIT 59013196

ITEM	QTY	DESCRIPTION
01	4 x 4	M10 Bolt & Washer
02	2	Pivot Pin
03	2	Rubber Bush

SAFETY CLIP KIT 59004114

ITEM	QTY	DESCRIPTION
04	1	Safety Link & Clip

EXTENDED RELEASE HANDLE KIT 59014458

ITEM	QTY	DESCRIPTION
04	1	Safety Link & Clip
05	1	Release Handle
06	1	Handle Bracket
07	1	M8 Binx Nut
08	1	M8 Hex Bolt

STANDARD RELEASE HANDLE KIT 59015102

INTERLOCK RELEASE HANDLE KIT 59013441

LEVER ASSEMBLY KIT 59015257

ITEM	QTY	DESCRIPTION
09	1	Split pin
10	1	M16 Binx Nut
11	1	M16 Hex HD Bolt
12	1	Lever Assy
14	1	Spring Clip

SPRING KIT 59015067

ITEM	QTY	DESCRIPTION
15	1	Main Spring
16	1	Jaw Spring

150SP² LOCKING MECHANISM KIT 59013687

ITEM	QTY	DESCRIPTION
13	2	Lockbar & Jaw pivot
14	2	Spring clip
15	1	Main spring
16	1	Jaw spring
17	1	Lockbar
18	1	Jaw

150SP² ADJUSTER KIT 559013390

ITEM	QTY	DESCRIPTION
19	1	Adjuster Stud Assy

3000/163CI ADJUSTER KIT 559015256

ITEM	QTY	DESCRIPTION
20	1	Adjuster Stud Assy

3000 ARCH LINER KIT 59015059

3000/3000LM WEAR RING KIT 59015237

LUBE CARTRIDGE 59016110

RETROFIT KIT 59016109

TOOLS & MANUALS REQUIRED

Kingpin Test Unit / Pivot Bolt Puller
150SP² Instruction Manual / 3000 Instruction Manual